

Visualizing SRTS in Minnesota



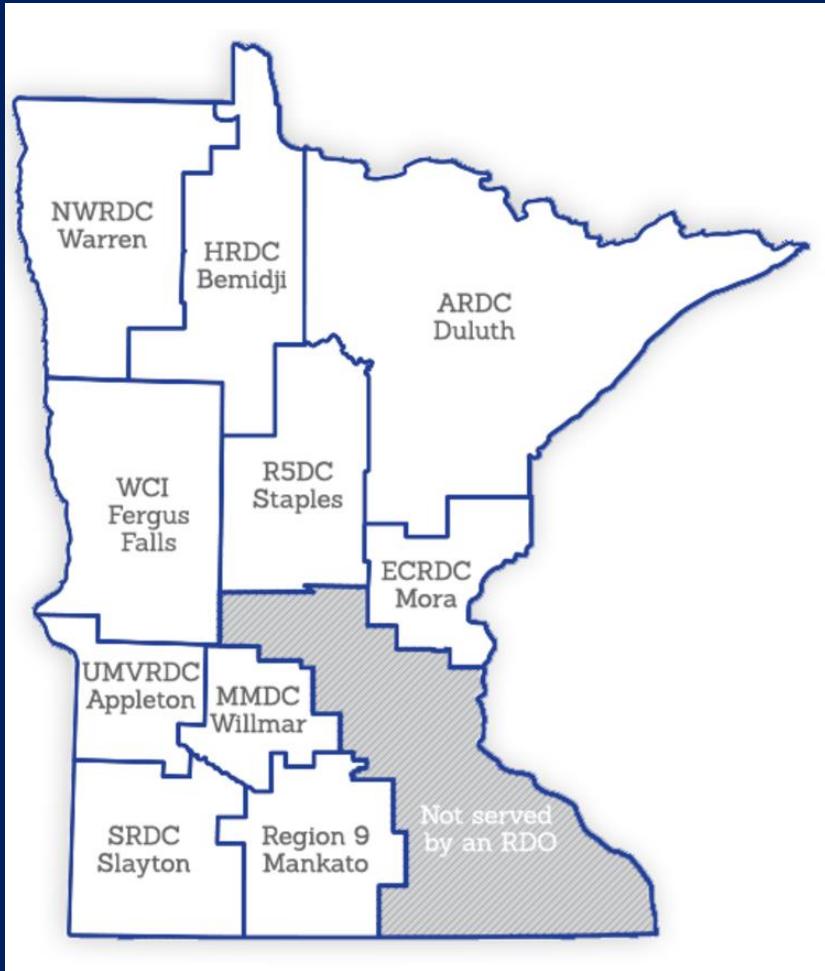


Multi-Level Leadership

State Agencies &
Non-Profits

Regional Development
Organizations, Public
Health, and Non-
profits

Schools and Communities



Five-year Strategic Plan



2015



Vision:

- Minnesota is a state where all students can walk and bicycle on routes that are safe, comfortable and convenient.



Minnesota is a state where all students can walk and bicycle on routes that are safe, comfortable, and convenient.

Planning Assistance Grants



Find address or place

How are we utilizing funding?

What plans might be affecting the road project I'm getting ready to work on?

Where are we spending Safe Routes to School dollars?

What type activities are going on in my SHIP region?

What does demand for SRTS look like?

What activities have happened in my region?

Is there a SRTS plan for my community? Where is it?

What has my school district or school done in the past?

100mi

-102.369 50.700 Degrees

Visualizing SRTS in Minnesota

Objective: To create an interactive, visual, easy to use source for information on SRTS projects and programs around the state.

Goals:

1. Accurately represent the scope and geographic distribution of past work
2. Increase the accessibility of completed plans
3. Demonstrate the local impact of constructed projects
4. Improve the financial transparency of the Safe Routes to School program
5. Provide a wide array of lenses to understand where and what type of projects have been implemented across Minnesota

Audiences:

1. MnDOT SRTS Staff
2. MnDOT Project Managers
3. School Staff
4. Elected Officials
5. Public Health Professionals (SHIP)
6. Community Members and Parents
7. Students?

Board Year	Board Name (School/District/City)	Entity/Board Type (Public/Private/Charter)	Project Type	Board Address	City	Zip Code	County	Schools Affected	Project Location	Project Address	ISD	School Enrollment (Number of Students)	Fee and Board Leach Percentage (Time of Day)	No. of Districts	Board Description	Category	Plan	Status
2007	Lake Elm Elementary School	Public	Infrastructure	1030 Stillwater Blvd	Lake Elm	55042	Washington	Lake Elm Elementary	Lake Elm Elementary	1100 Stillwater	834	710	18.5	1	Coordinate with the City of	Planning	Link to Document	Completed
2008	Ruhq	City	Infrastructure	240W Main St	Ruhq	55018	Blue Earth	Maple River/West Middle	Maple River/West Middle	214W Main Street	2195	203	41.7	7	2008 Ruhq Infrastructure	Infrastructure		Completed
2008	Eagle Lake Elementary	Public	Infrastructure	785 Parkway Runner	Eagle Lake	55024	Blue Earth	Eagle Lake Elementary	Eagle Lake Elementary	500 Le Sueur Hwy	77	307	51.3	7	Eagle Lake Safe Routes	Infrastructure		Completed
2008	North Branch	City	Infrastructure	6400 Elm Street	North Branch	55056	Chicago	North Branch Primary	Swain River	37725 Grand Ave	150	1053	25.8	1	The proposed project will	Infrastructure		Completed
2008	Dilworth Elementary	Public	Infrastructure	2-1st Avenue SE	Dilworth	55223	Clay	Dilworth Elementary	Dilworth Elementary	100 Main St N	2164	449	32.4	4	Dilworth Safe Routes	Infrastructure		Completed
2008	Menasha Lake	City	Infrastructure	330 Third Avenue	Menasha Lake	55453	Collawood	Menasha Lake Elementary	Menasha Lake	458 42nd St N	173	482	46.2	7	Improving crosswalks and	Infrastructure		Completed
2008	Hable Elementary School	Public	Infrastructure	7000 Golden Valley Rd	Golden Valley	55427	Hennepin	Hable Elementary	Hable Elementary	2001 Hable Ave N	2891	363	46.7	1	Traffic control safety	Infrastructure		Completed
2008	Rogers Middle School	Public	Infrastructure	P.O. Box 1747	St. Cloud	55902	Sherburne	Rogers Middle School	Rogers Middle School	2855 14th Ave	720	300	12.8	1	The proposed project in the	Infrastructure		Completed
2008	Lakewood High School	Public	Infrastructure	875 Barstad Rd	Collawood	55223	Lyon	Lakewood High School	Lakewood High School	875 Barstad Rd	2167	243	28.3	8	Barstad Road	Infrastructure		Completed
2008	Dea Franklin Elementary	Public	Infrastructure	2814th Street SE, Room 400	Rochester	55904	Olmsted	Dea Franklin Elementary	Dea Franklin Elementary	1001 3th Ave SE	535	536	51.7	6	The project will involve the	Infrastructure		Completed
2008	Valerian Hills Elementary	Public	Infrastructure	1245W. Highway SE	Andra Hills	55112	Ramsey	Valerian Hills Elementary	Valerian Hills	1770W County Rd	621	632	34.7	1	Project provides for	Infrastructure		Completed
2008	Worroad Elementary	Public	Infrastructure	518 Cedar Avenue	Worroad	55763	Revere	Worroad Elementary	Worroad Elementary	518 Cedar Ave	630	341	42.5	2	The Worroad School District	Infrastructure		Completed
2008	Breaker Sluor Elementary	Public	Infrastructure	5200W Superior Street	Daluth	55806	St. Louis	Sluor Elementary	Sluor Elementary	745 18th Ave W	783	300	56.8	1	This project will address	Infrastructure		Completed
2008	St. Louis County	County	Infrastructure	100 N 5th Ave W	Daluth	55802	St. Louis	St. Louis County	St. Louis County	100 N 5th Ave W	-	25000	36.3	1	School Drop Speed	Other	Hardware	Completed
2008	Oakdale	City	Infrastructure	1504 Hading Ave N	Oakdale	55120	Washington	Oakdale Elementary	Oakdale Elementary	821 Glenbrook	622	470	32.2	1	The City of Oakdale proposes	Infrastructure		Completed
2008	Maunroe	City	Infrastructure	311 Buffalo Ave N. P.O. Box 70	Maunroe	55963	Wright	Maunroe Elementary	Maunroe Elementary	100 2nd St S	877	354	37.8	3	Connecting neighborhoods in	Infrastructure		Completed
2008	Thompson Township	City	Infrastructure	25 E Haring Rd. P.O. Box 10	Thompson	55793	Carlton	Wielosziel Elementary	Hullville	Hullville	33	1425	18.5	1	Esko Safe Routes to School	Planning	Link to Document	Completed
2008	Thompson Township	City	Infrastructure	25 E Haring Rd. P.O. Box 10	Thompson	55793	Carlton	Wielosziel Elementary	Wielosziel Elementary	2 E Hux St, Esko	33	576	19.5	1	Esko Safe Routes to School	Planning	Link to Document	Completed
2008	Thompson Township	City	Infrastructure	25 E Haring Rd. P.O. Box 10	Thompson	55793	Carlton	Lionsa High School	Lionsa High School	2 E Hux St, Esko	33	549	7.3	1	Esko Safe Routes to School	Planning	Link to Document	Completed
2008	Grand Marais	City	Infrastructure	221W 1st Street	Grand Marais	55802	Cook	Saulteaux Menasha	Hullville	Hullville	166	322	29.5	1	This plan will identify	Planning	Link to Document	Completed
2008	Grand Marais	City	Infrastructure	221W 1st Street	Grand Marais	55802	Cook	Saulteaux Menasha	Saulteaux Menasha	181W 5th St	166	156	38.1	1	This plan will identify	Planning	Link to Document	Completed
2008	Grand Marais	City	Infrastructure	221W 1st Street	Grand Marais	55802	Cook	Cook County Middle School	Cook County Middle School	181 5th St, Grand	166	126	28.6	1	This plan will identify	Planning	Link to Document	Completed
2008	Grand Marais	City	Infrastructure	221W 1st Street	Grand Marais	55802	Cook	Grand Eggnation School	Grand Eggnation School	558 E 5th St	166	-	-	1	This plan will identify	Planning	Link to Document	Completed
2008	Laksville	City	Infrastructure	28155 Halguker Ave	Laksville	55844	Dakota	Cherry View Elementary	Hullville	Hullville	134	11905	6.6	1	The City of Laksville works	Planning	Link to Document	Completed
2008	Laksville	City	Infrastructure	28155 Halguker Ave	Laksville	55844	Dakota	Cherry View Elementary	Cherry View Elementary	8000 475th St W	134	530	9.2	1	The City of Laksville works	Planning	Link to Document	Completed
2008	Laksville	City	Infrastructure	28155 Halguker Ave	Laksville	55844	Dakota	Christina Haddleton	Christina Haddleton	3563 475th St W	134	470	11.3	1	The City of Laksville works	Planning	Link to Document	Completed
2008	Laksville	City	Infrastructure	28155 Halguker Ave	Laksville	55844	Dakota	Copeland Lake Elementary	Copeland Lake Elementary	16250 Ipaava Ave	134	519	17.1	1	The City of Laksville works	Planning	Link to Document	Completed
2008	Laksville	City	Infrastructure	28155 Halguker Ave	Laksville	55844	Dakota	Eau Claire Elementary	Eau Claire Elementary	10050 Ipaava Ave	134	537	2.7	1	The City of Laksville works	Planning	Link to Document	Completed
2008	Laksville	City	Infrastructure	28155 Halguker Ave	Laksville	55844	Dakota	John F. Kennedy	John F. Kennedy	2420 Halguker	134	549	8.2	1	The City of Laksville works	Planning	Link to Document	Completed
2008	Laksville	City	Infrastructure	28155 Halguker Ave	Laksville	55844	Dakota	Lake Maria Elementary	Lake Maria Elementary	10075 46th Blvd	134	506	11.8	1	The City of Laksville works	Planning	Link to Document	Completed
2008	Laksville	City	Infrastructure	28155 Halguker Ave	Laksville	55844	Dakota	Lakewood Elementary	Lakewood Elementary	28500 Jaquard	134	654	5.8	1	The City of Laksville works	Planning	Link to Document	Completed
2008	Laksville	City	Infrastructure	28155 Halguker Ave	Laksville	55844	Dakota	North Trail Elementary	North Trail Elementary	5500 47th St W	132	704	19.6	1	The City of Laksville works	Planning	Link to Document	Completed
2008	Laksville	City	Infrastructure	28155 Halguker Ave	Laksville	55844	Dakota	Oak Hills Elementary	Oak Hills Elementary	8040 45th St W	134	457	5.3	1	The City of Laksville works	Planning	Link to Document	Completed
2008	Laksville	City	Infrastructure	28155 Halguker Ave	Laksville	55844	Dakota	Overland Lake Elementary	Overland Lake	16231 Klumak	134	426	5.6	1	The City of Laksville works	Planning	Link to Document	Completed
2008	Laksville	City	Infrastructure	28155 Halguker Ave	Laksville	55844	Dakota	Parkview Elementary	Parkview Elementary	6755 Jordian	136	639	21.8	1	The City of Laksville works	Planning	Link to Document	Completed
2008	Laksville	City	Infrastructure	28155 Halguker Ave	Laksville	55844	Dakota	Crabtree Middle School	Crabtree Middle School	10610 Ipaava Ave	134	803	5.5	1	The City of Laksville works	Planning	Link to Document	Completed
2008	Laksville	City	Infrastructure	28155 Halguker Ave	Laksville	55844	Dakota	Krouse Trail Middle	Krouse Trail Middle	19455 Krouse	134	809	7.8	1	The City of Laksville works	Planning	Link to Document	Completed
2008	Laksville	City	Infrastructure	28155 Halguker Ave	Laksville	55844	Dakota	McGuire Middle School	McGuire Middle School	74220 Halguker	134	307	7.3	1	The City of Laksville works	Planning	Link to Document	Completed
2008	Riskfield	City	Infrastructure	6700 Parkland Ave S	Riskfield	55423	Hennepin	Cranston Elementary	Hullville	Hullville	200	2450	61.2	1	Riskfield works funding for a	Planning	Link to Document	Completed
2008	Riskfield	City	Infrastructure	6700 Parkland Ave S	Riskfield	55423	Hennepin	Cranston Elementary	Cranston Elementary	7915 Bloomington	200	332	74.2	1	Riskfield works funding for a	Planning	Link to Document	Completed
2008	Riskfield	City	Infrastructure	6700 Parkland Ave S	Riskfield	55423	Hennepin	Sherridon Hills Elementary	Sherridon Hills	6400 Sherridon	200	435	58.4	1	Riskfield works funding for a	Planning	Link to Document	Completed
2008	Riskfield	City	Infrastructure	6700 Parkland Ave S	Riskfield	55423	Hennepin	Riskfield Middle School	Riskfield Middle School	7401 Oliver Ave	200	857	54.4	1	Riskfield works funding for a	Planning	Link to Document	Completed
2008	Riskfield	City	Infrastructure	6700 Parkland Ave S	Riskfield	55423	Hennepin	Riskfield Intermediate	Riskfield Intermediate	7820 15th Ave S	200	774	63.8	1	Riskfield works funding for a	Planning	Link to Document	Completed
2008	Riskfield	City	Infrastructure	6700 Parkland Ave S	Riskfield	55423	Hennepin	St. Peter's School	St. Peter's School	6720 Highland	200	-	-	1	Riskfield works funding for a	Planning	Link to Document	Completed
2008	Riskfield	City	Infrastructure	6700 Parkland Ave S	Riskfield	55423	Hennepin	St. Richard's School	St. Richard's School	7540 Penn Ave S	200	-	-	1	Riskfield works funding for a	Planning	Link to Document	Completed
2008	Riskfield	City	Infrastructure	6700 Parkland Ave S	Riskfield	55423	Hennepin	St. Catherine School	St. Catherine School	5544 15th Ave S	200	-	-	1	Riskfield works funding for a	Planning	Link to Document	Completed
2008	Riskfield	City	Infrastructure	6700 Parkland Ave S	Riskfield	55423	Hennepin	Partnership Academy	Partnership Academy	385 East 77th	200	-	-	1	Riskfield works funding for a	Planning	Link to Document	Completed
2008	Viking Elementary	Public	Infrastructure	Box 350	Pelican Rapids	56572	Otter Tail	Viking Elementary	Viking Elementary	4 Viking Dr	540	112	43.1	4	Study for whole City and pel	Planning	Link to Document	Completed
2008	St. Paul	City	Infrastructure	25W 4th St	St. Paul	55102	Ramsey	St. Paul Elementary	City of St. Paul	27W 4th St, St	625	3950	20.7	1	Citywide education b	Other	Hardware	Completed

What Tools Are Needed?



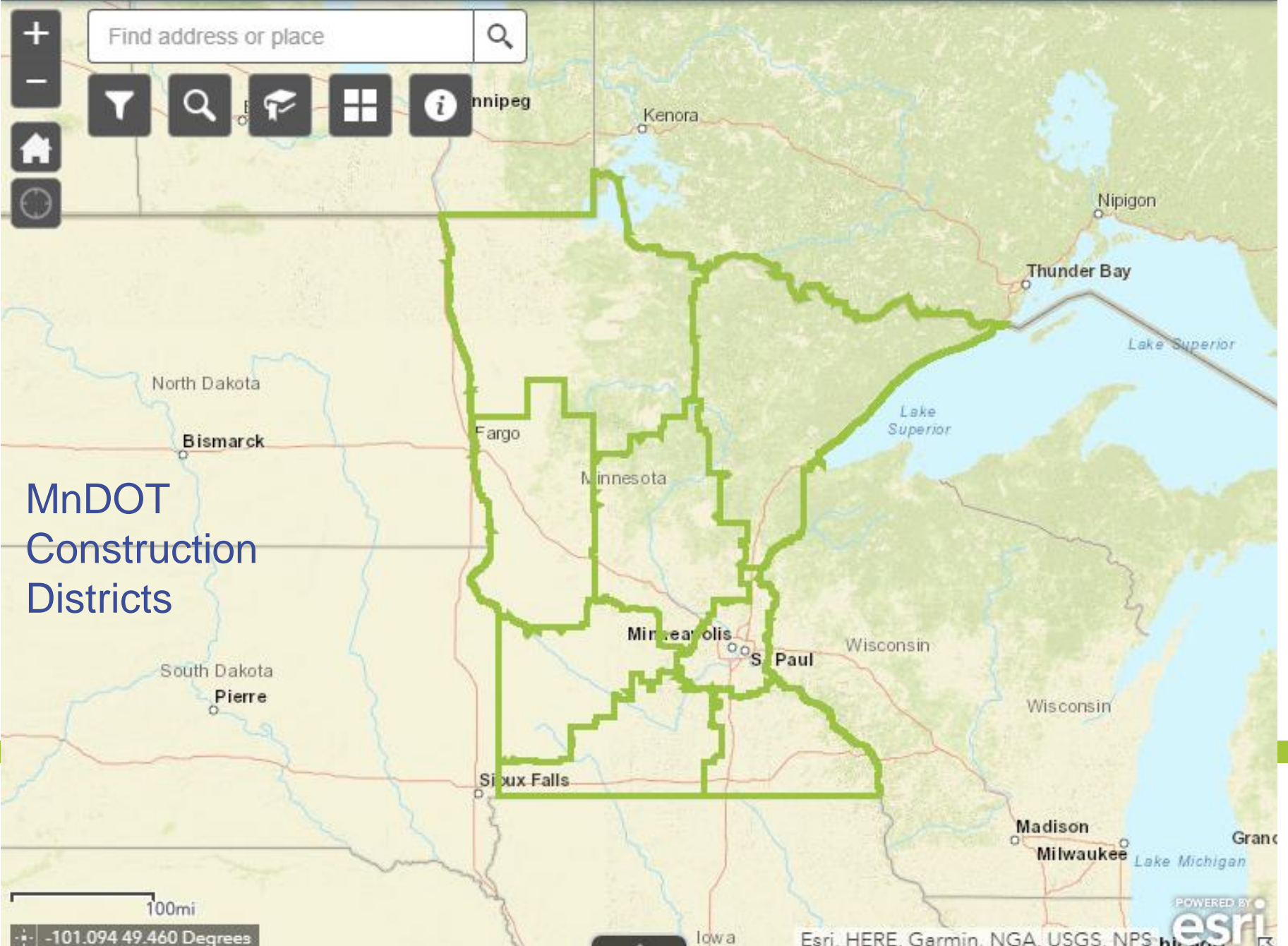
ArcGIS



Visualizing Safe Routes to School in MN



Find address or place



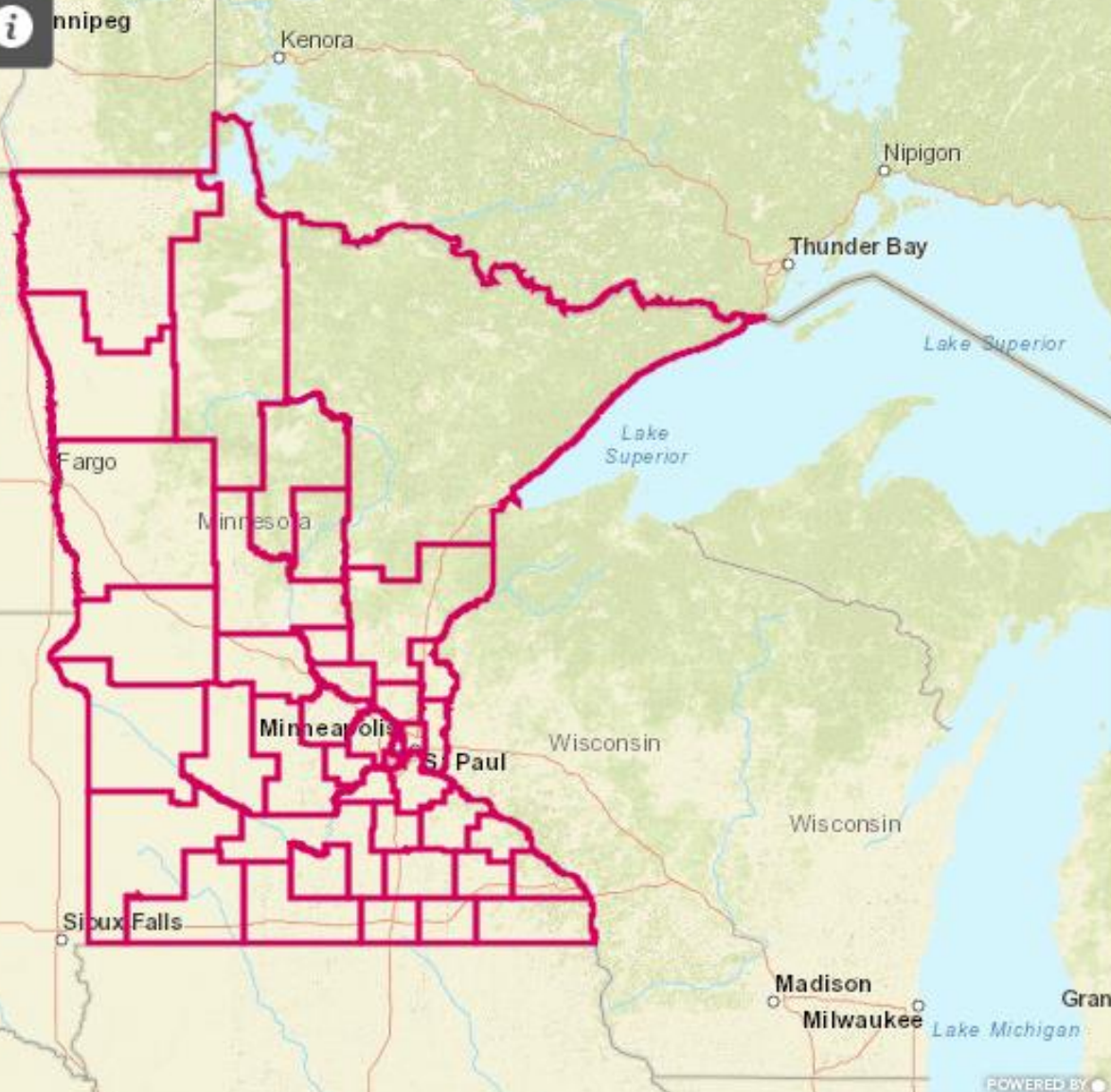
MnDOT
Construction
Districts

100mi
-101.094 49.460 Degrees

POWERED BY
esri
Esri, HERE, Garmin, NGA, USGS, NPS, NOAA



Find address or place



SHIP Grantees

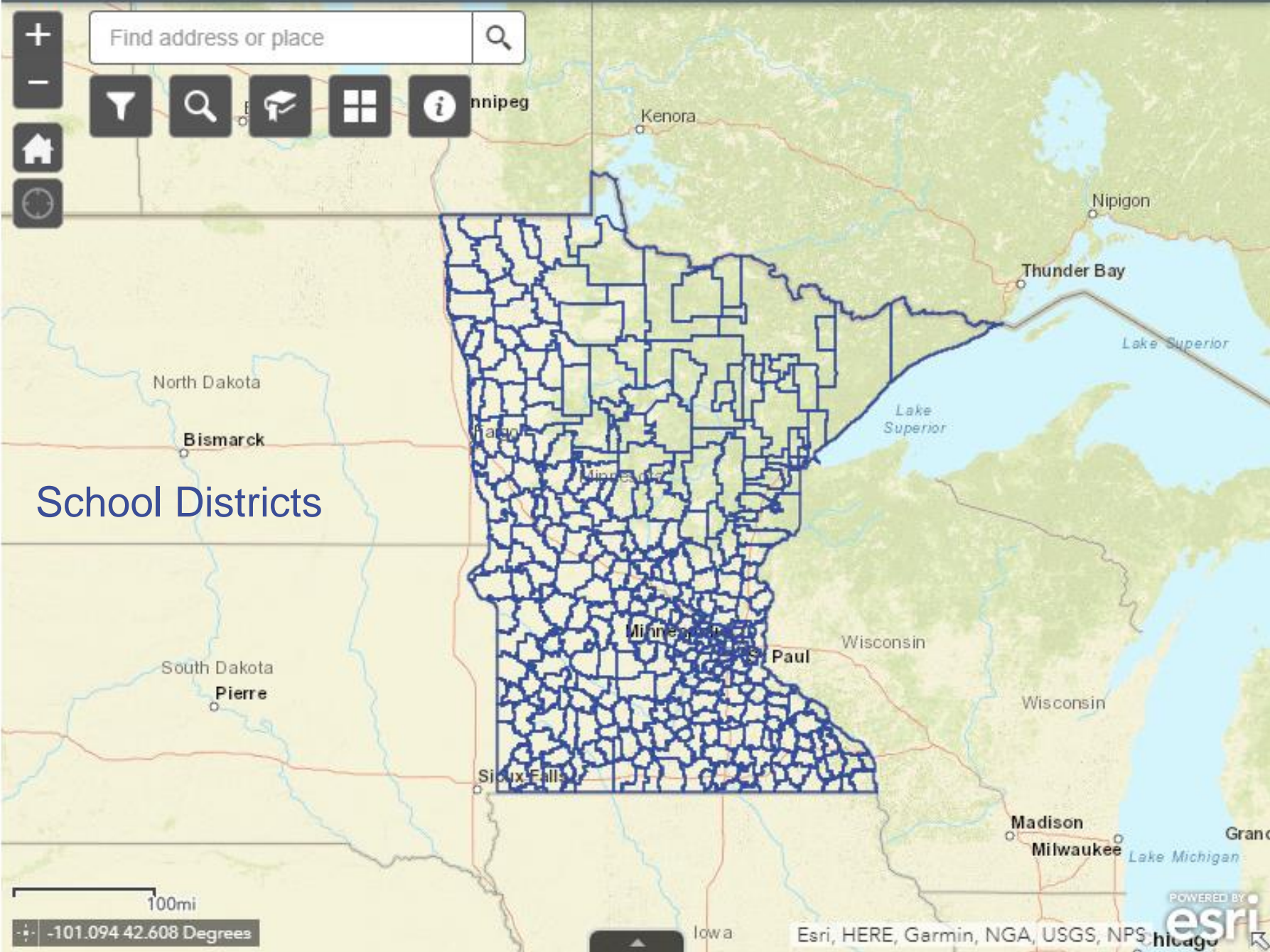
100mi
-99.666 42.251 Degrees



Visualizing Safe Routes to School in MN




Find address or place 



School Districts

100mi
-101.094 42.608 Degrees

POWERED BY 
Esri, HERE, Garmin, NGA, USGS, NPS, Chicago



Visualizing Safe Routes to School in MN



Find address or place



Manitowish

Kenora

Nipigon

Thunder Bay

Lake Superior

Lake Superior

North Dakota

Bismarck

Fargo

Winnetonka

Senate/House Districts

South Dakota

Pierre

Minneapolis

Paul

Wisconsin

Wisconsin

Sioux Falls

Madison

Milwaukee

Grand

Lake Michigan

100mi

-95.799 42.056 Degrees

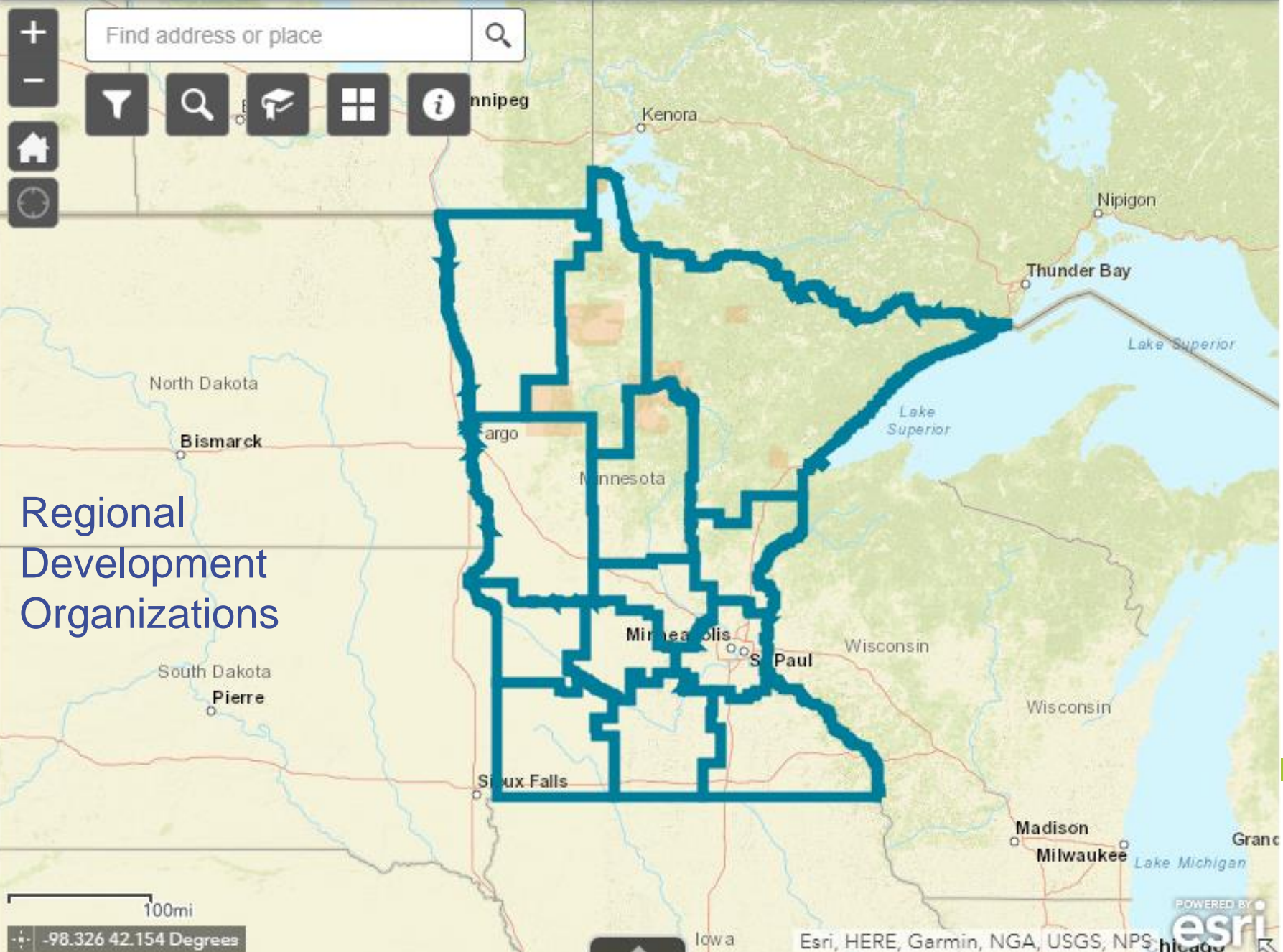


Garmin, NGA, USGS, NPS | Office of the Minn... Chicago





Visualizing Safe Routes to School in MN



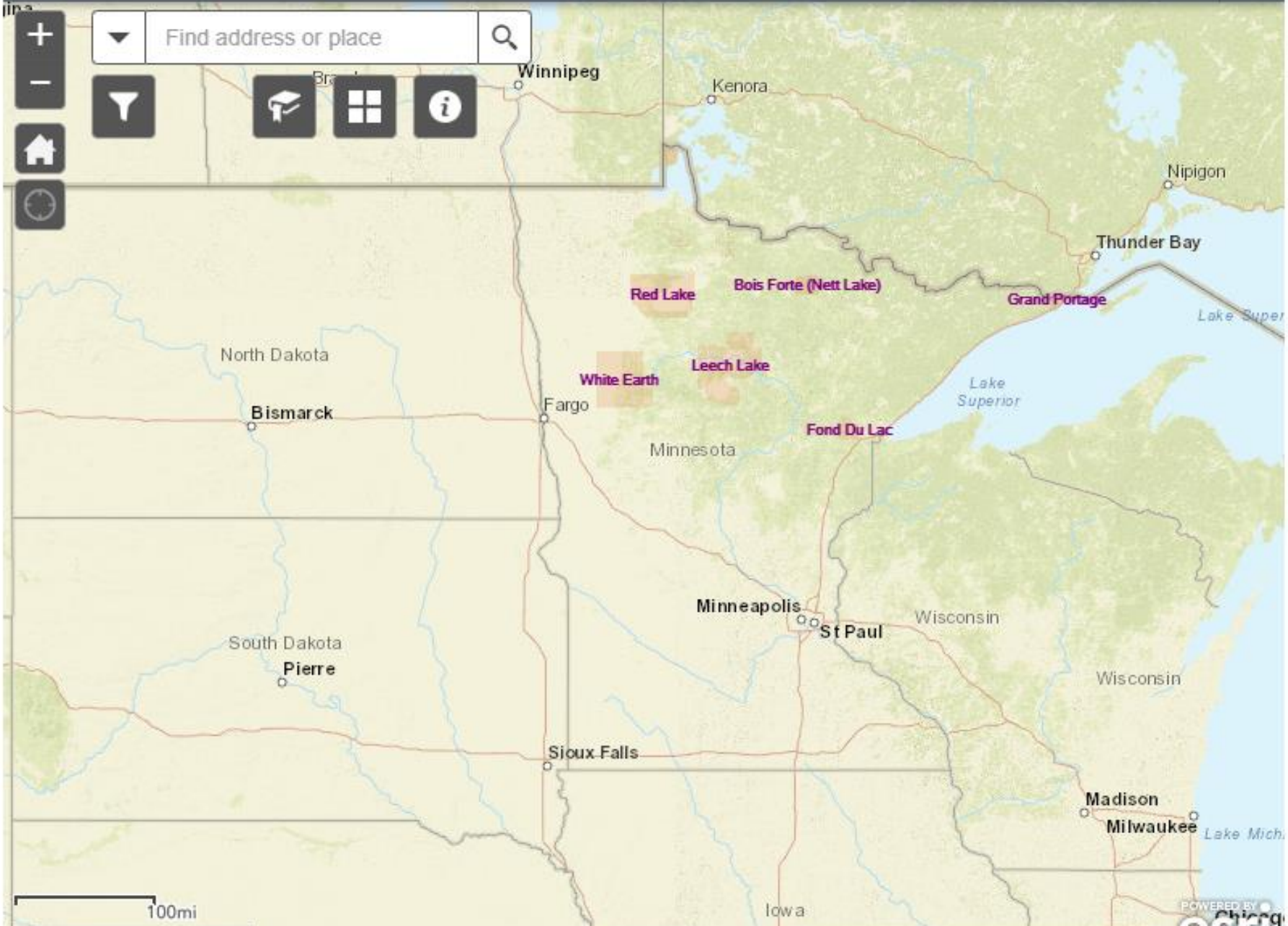
Regional
Development
Organizations

100mi
-98.326 42.154 Degrees

POWERED BY
esri
Esri, HERE, Garmin, NGA, USGS, NPS, Chicago



Visualizing Safe Routes to School in MN





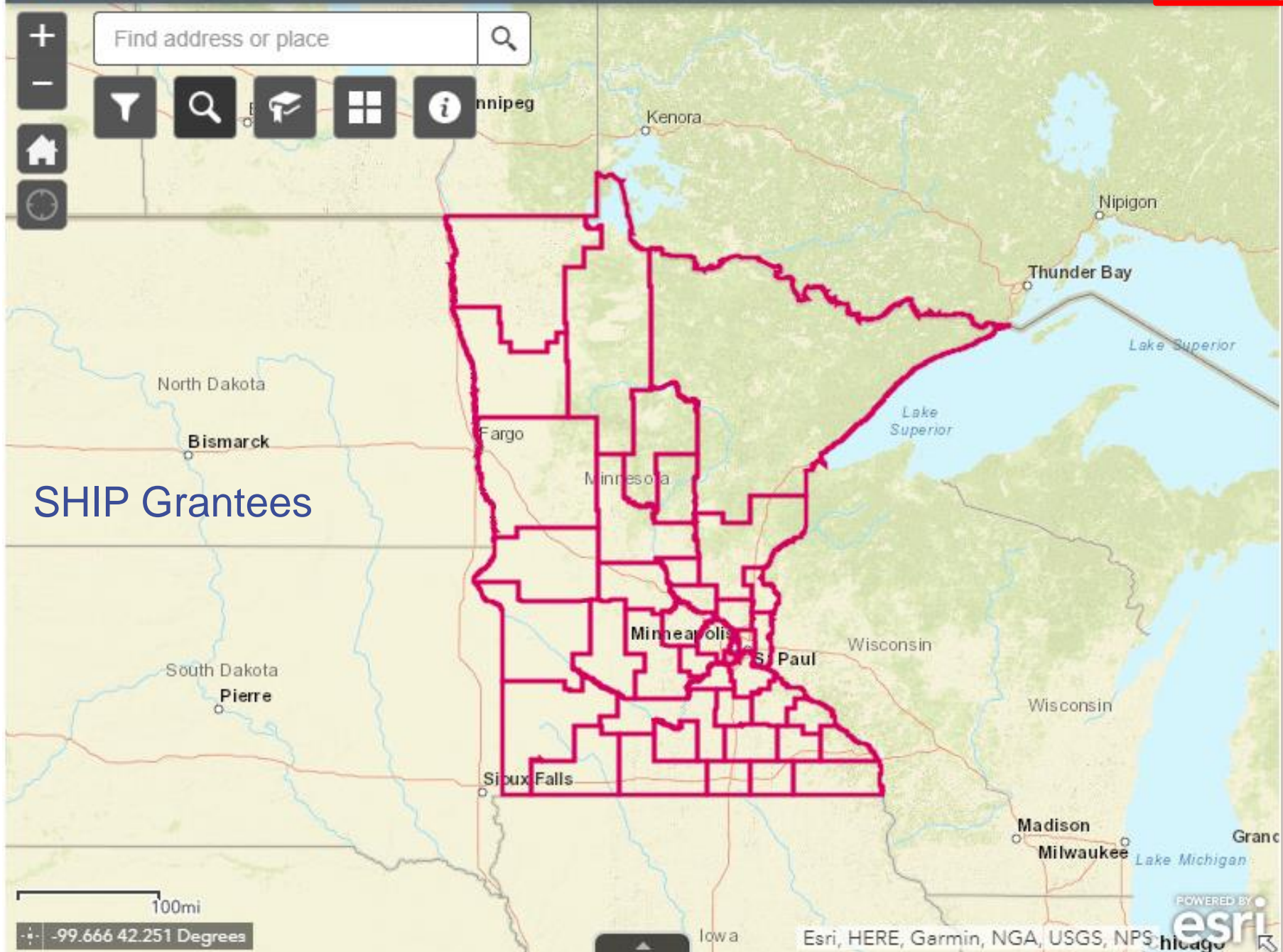
Visualizing Safe Routes to School in MN



Find address or place



SHIP Grantees





Visualizing Safe Routes to School in MN



Find address or place



Manitowish
Kenora

Fargo

Minnesota

Minneapolis

Sioux Falls

Legend

Statewide Health Improvement Program (SHIP) Grantees



SHIP Grantees

100mi

-87.911 50.853 Degrees



Visualizing Safe Routes to School in MN



Find address or place



SHIP Grantees

100mi
-86.263 50.826 Degrees

Layer List

Layers

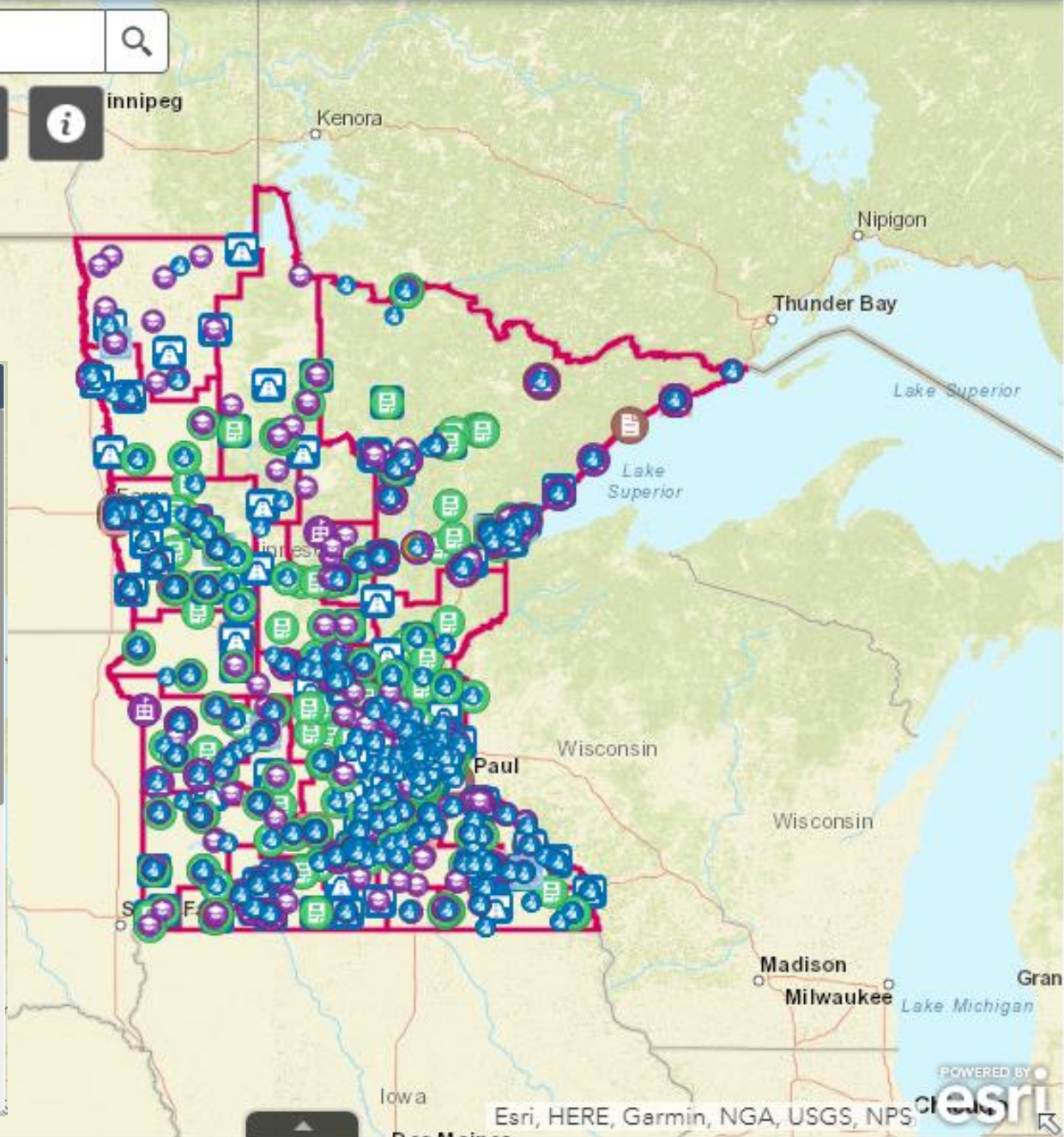
- Participation in Bike/Walk Events ...
- Walk! Bike! Fun! Trainees ...
- Walk! Bike! Fun! Training Host Sites ...
- MnDOT-Funded SRTS Projects ...
- Non MnDOT Funded Bike Fleets ...
- Plans Funded Outside MnDOT's SRTS Program ...
- Cities ...
- Senate Districts ...
- House Districts ...
- School Districts with SRTS Activities ...
- School Districts ...
- Statewide Health Improvement Program (SHIP) Grantees ...
- Construction Districts ...



Visualizing Safe Routes to School in MN



Find address or place



Layer List

Layers

- Participation in Bike/Walk Events ...
- Walk! Bike! Fun! Trainees ...
- Walk! Bike! Fun! Training Host Sites ...
- MnDOT-Funded SRTS Projects ...
 - Planning Assistance
 - Infrastructure
 - Other Non-Infrastructure
 - Bicycle Fleet
- Non MnDOT Funded Bike Fleets ...
- Plans Funded Outside MnDOT's SRTS Program ...
- Cities ...
- Senate Districts ...
- House Districts ...
- School Districts with SRTS Activities ...
- School Districts ...

44.621219, -93.084707 Degrees





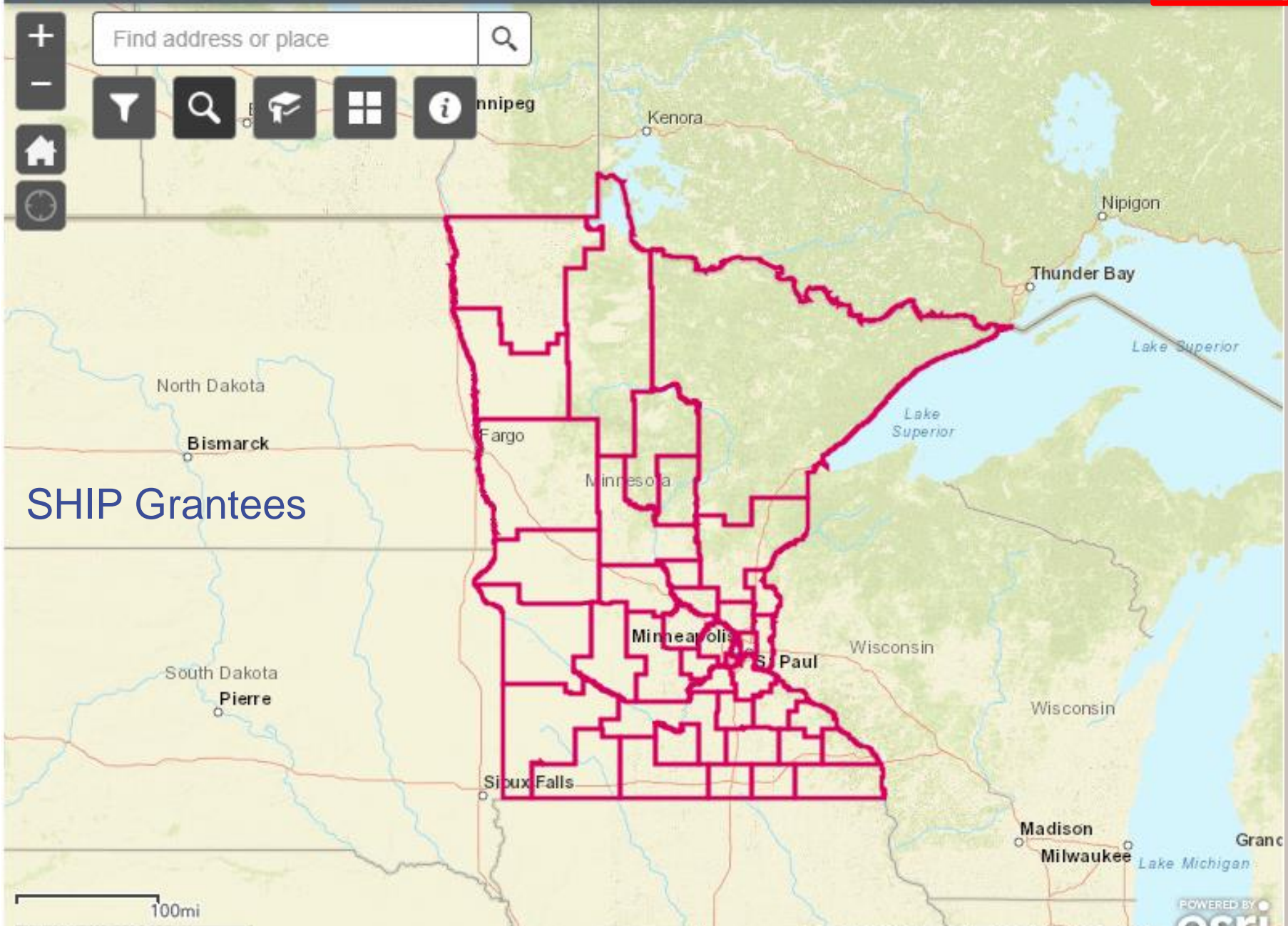
Visualizing Safe Routes to School in MN



Find address or place



SHIP Grantees



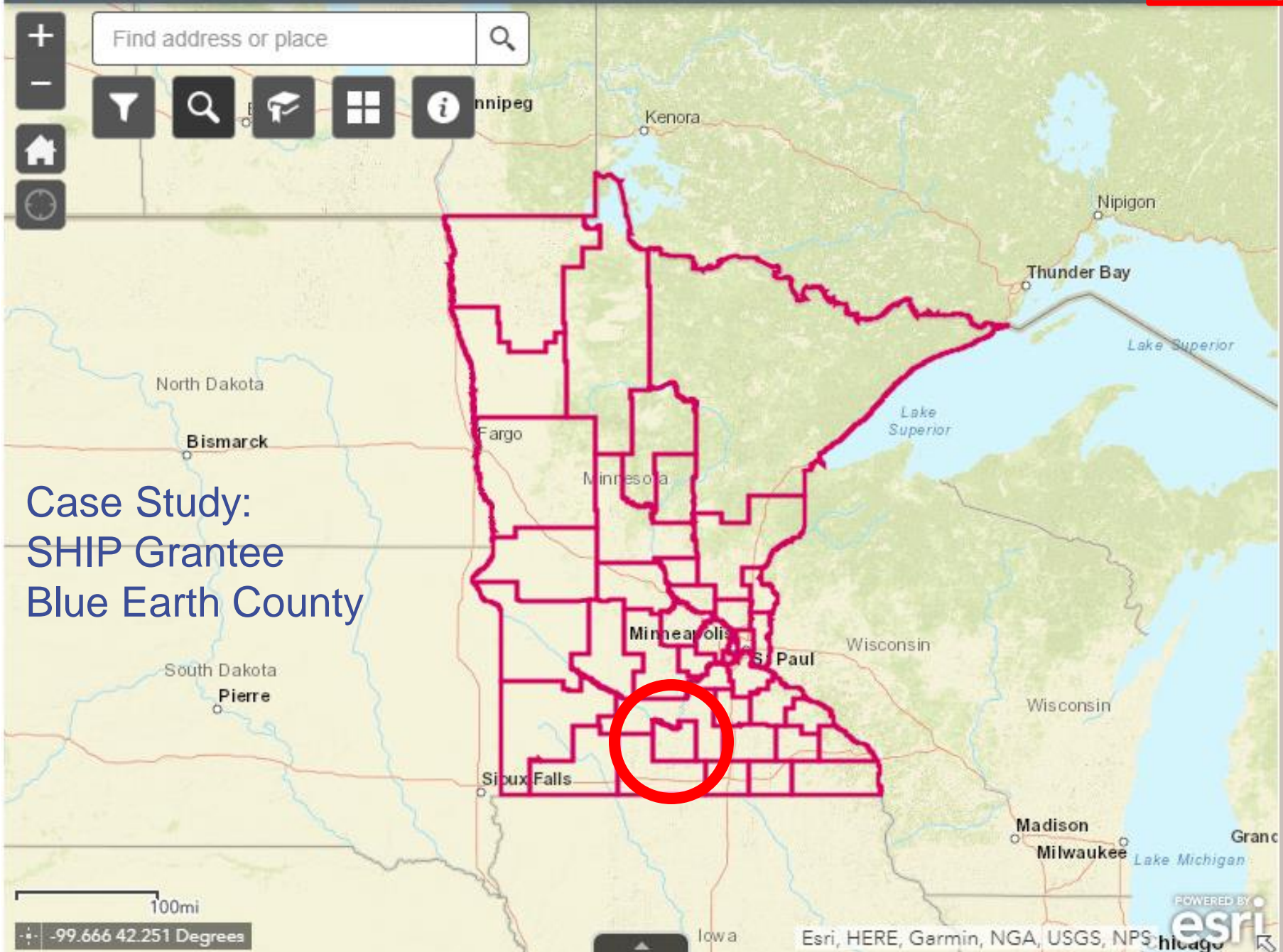
100mi
-99.666 42.251 Degrees



Find address or place



Case Study:
SHIP Grantee
Blue Earth County





Find address or place

+ -

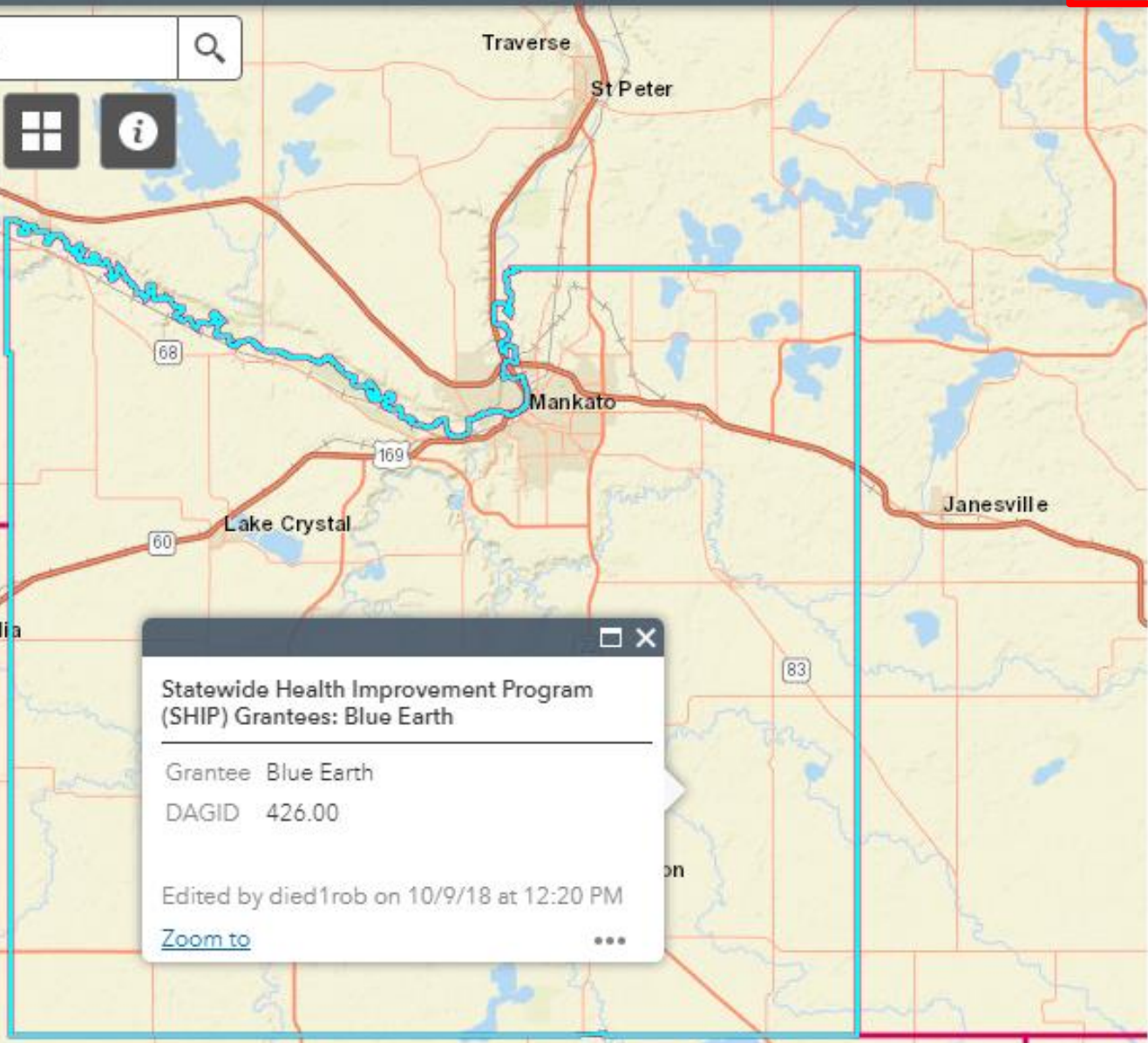
Home

Layers

Search

Layers

Info



Getting to Know
Blue Earth SHIP

Statewide Health Improvement Program (SHIP) Grantees: Blue Earth

Grantee Blue Earth

DAGID 426.00

Edited by died1rob on 10/9/18 at 12:20 PM

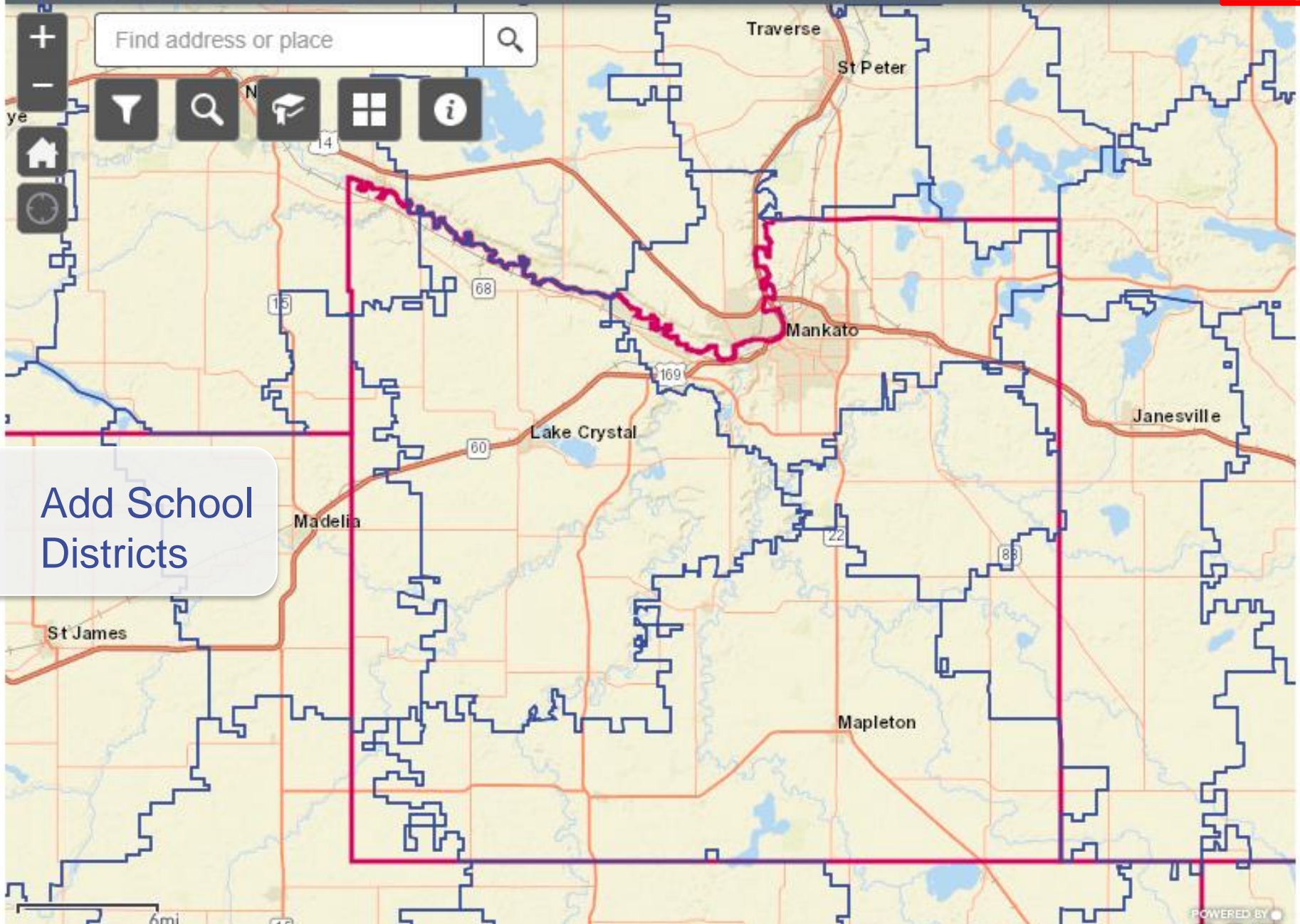
[Zoom to](#)



Visualizing Safe Routes to School in MN



Find address or place



Add School Districts

6mi
-93.968 44.018 Degrees



Visualizing Safe Routes to School in MN

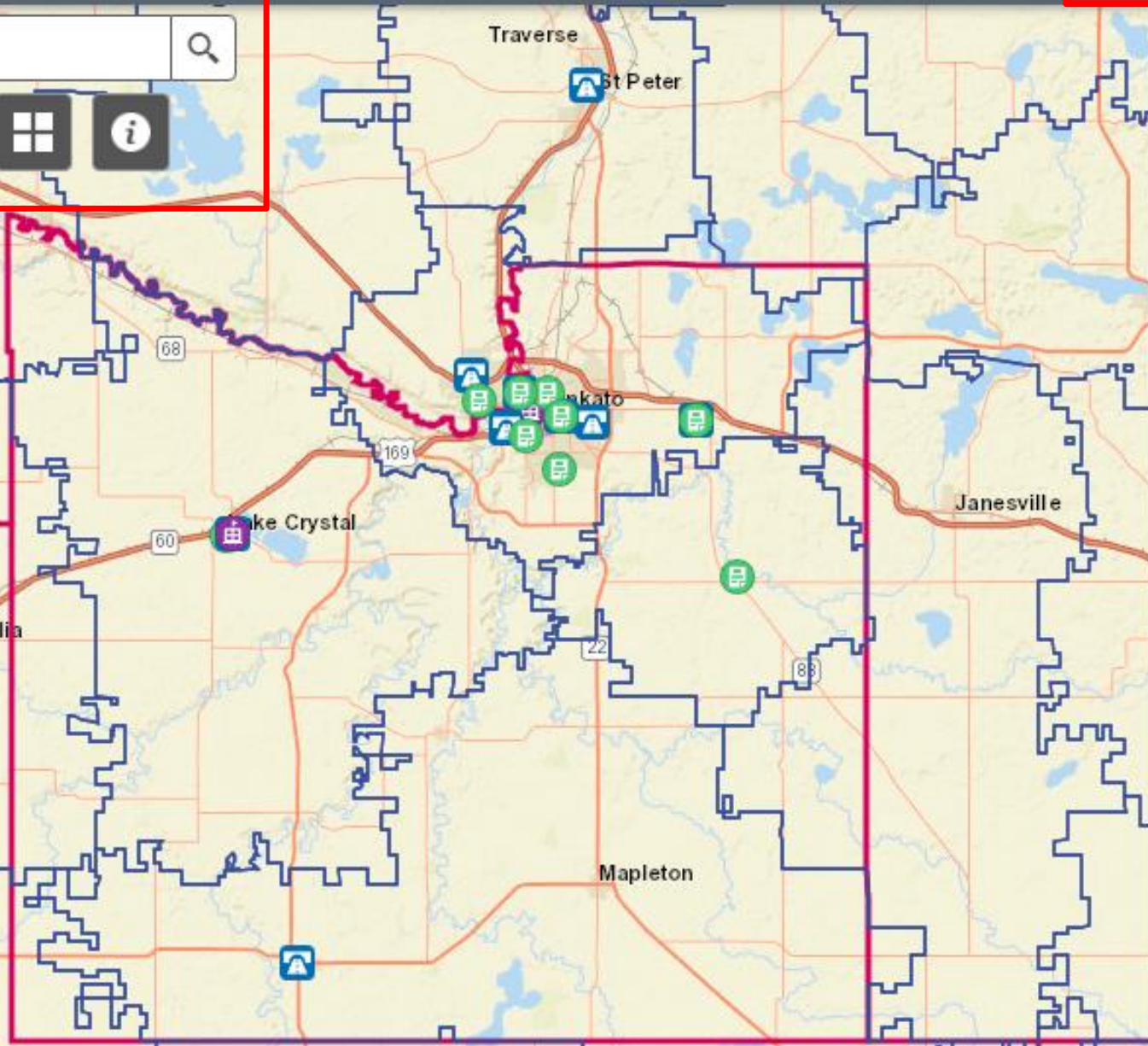


Map navigation and search controls:

- Zoom in (+) and zoom out (-) buttons.
- Home button.
- Search bar: "Find address or place" with a magnifying glass icon.
- Filter icon (funnel).
- Search icon (magnifying glass).
- Layers icon (grid).
- Info icon (i).

Layer List panel:

- Layers
- Participation in Bike/Walk Events
- Walk! Bike! Fun! Trainees
- Walk! Bike! Fun! Training Host Sites
- MnDOT-Funded SRTS Projects
 - Planning Assistance
 - Infrastructure
 - Other Non-Infrastructure
 - Bicycle Fleet
- Non MnDOT Funded Bike Fleets
- Plans Funded Outside MnDOT's SRTS Program
- Cities
- Senate Districts
- House Districts
- School Districts with SRTS Activities
- School Districts

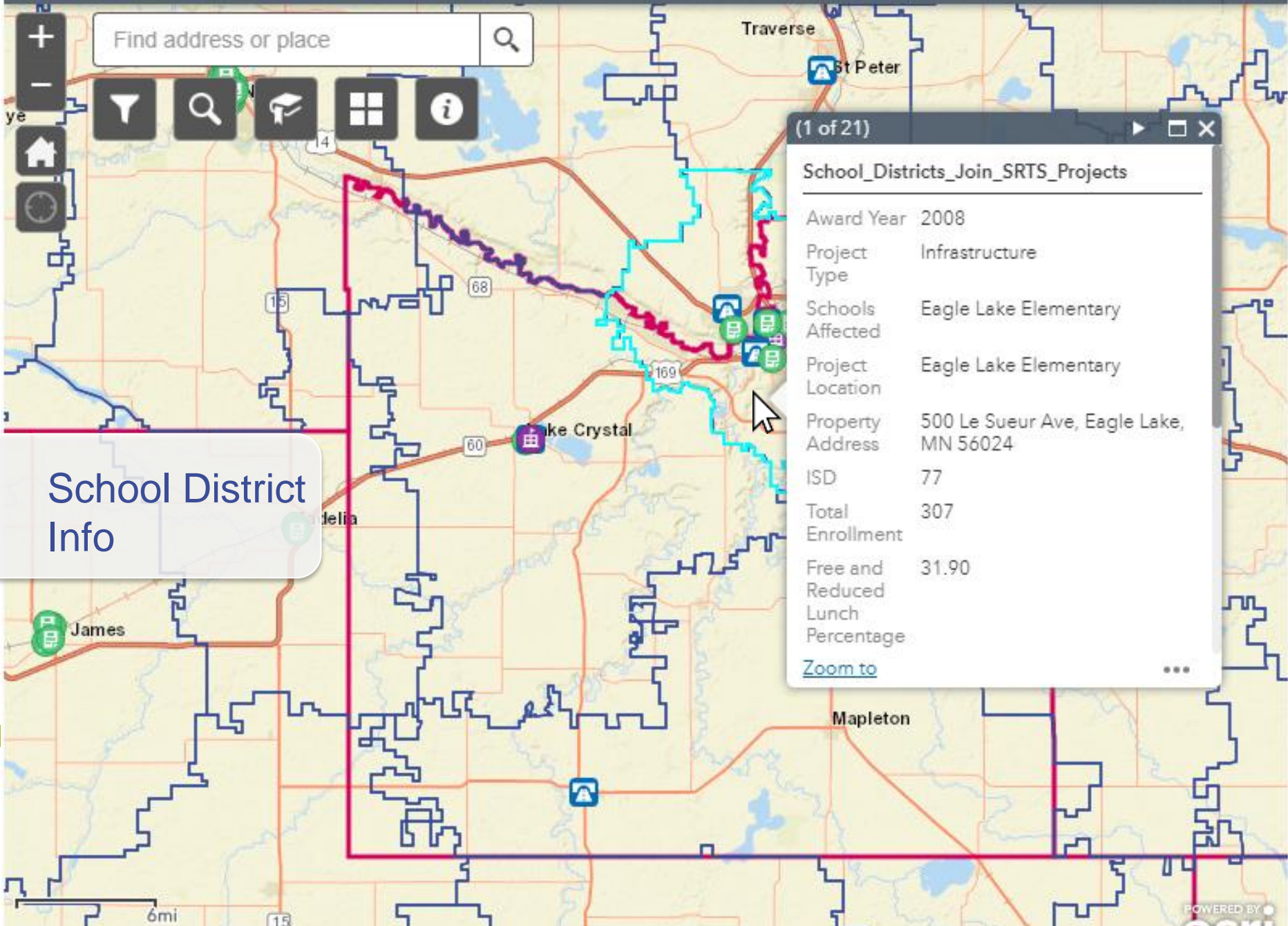
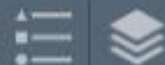


Add Layers

6mi
-94 223 44 130 Degrees



Visualizing Safe Routes to School in MN



Find address or place

(1 of 21)

School_Districts_Join_SRTS_Projects

Award Year	2008
Project Type	Infrastructure
Schools Affected	Eagle Lake Elementary
Project Location	Eagle Lake Elementary
Property Address	500 Le Sueur Ave, Eagle Lake, MN 56024
ISD	77
Total Enrollment	307
Free and Reduced Lunch Percentage	31.90

[Zoom to](#)



School District Info



Visualizing Safe Routes to School in MN



Find address or place



Legend

MnDOT-Funded SRTS Projects

- Planning Assistance (Green circle with school icon)
- Infrastructure (Blue square with bicycle icon)
- Other Non-Infrastructure (Purple circle with bicycle icon)
- Bicycle Fleet (Blue square with bicycle icon)

Non MnDOT Funded Bike Fleets

- (Red square with bicycle icon)

Plans Funded Outside MnDOT's SRTS Program

- (Brown circle with school icon)

School Districts with SRTS Activities

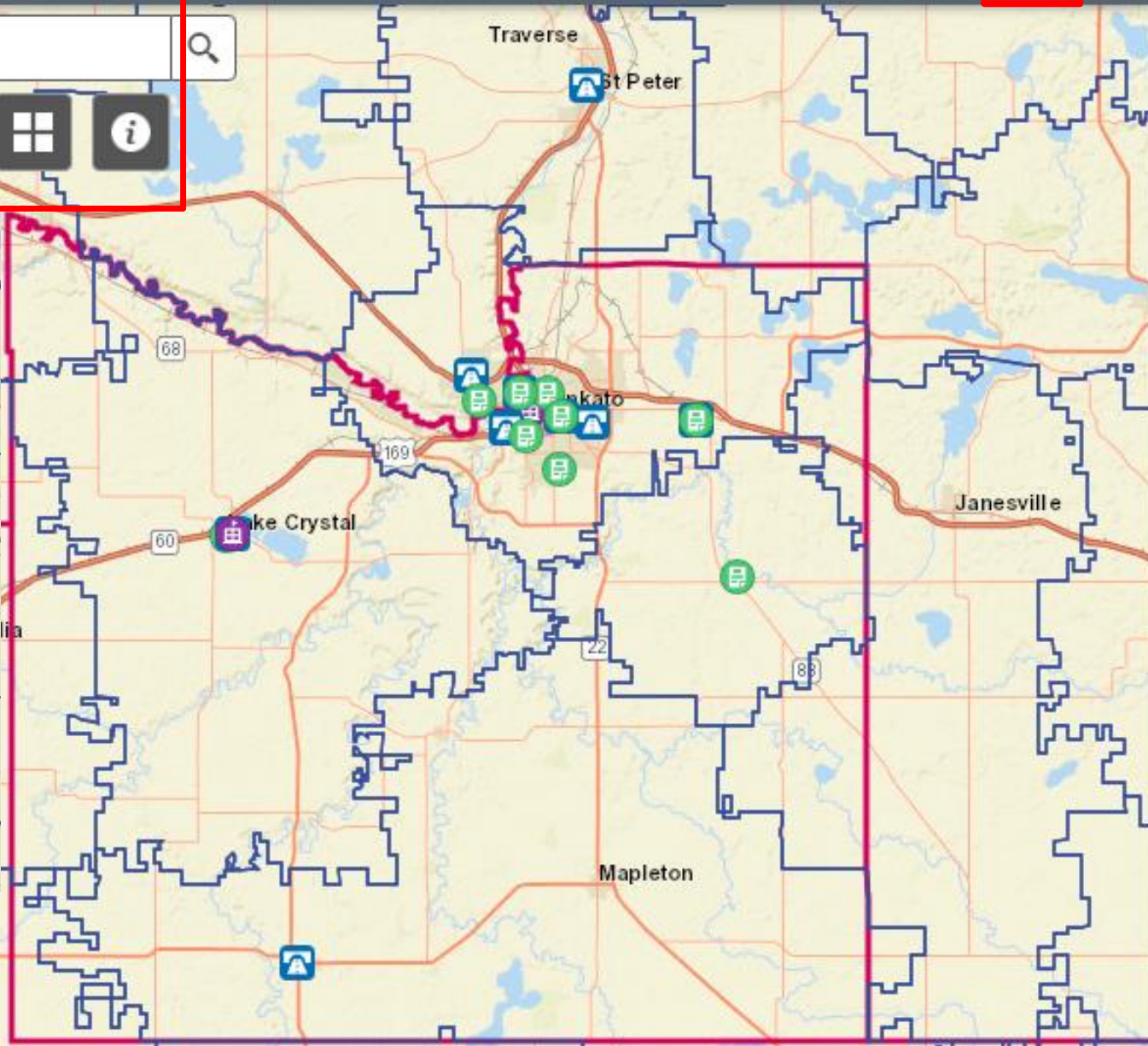
- (Blue outline of a school district)

School Districts

- (Blue outline of a school district)

Statewide Health Improvement Program (SHIP) Grantees

- (Red outline of a school district)



Utilize Legend

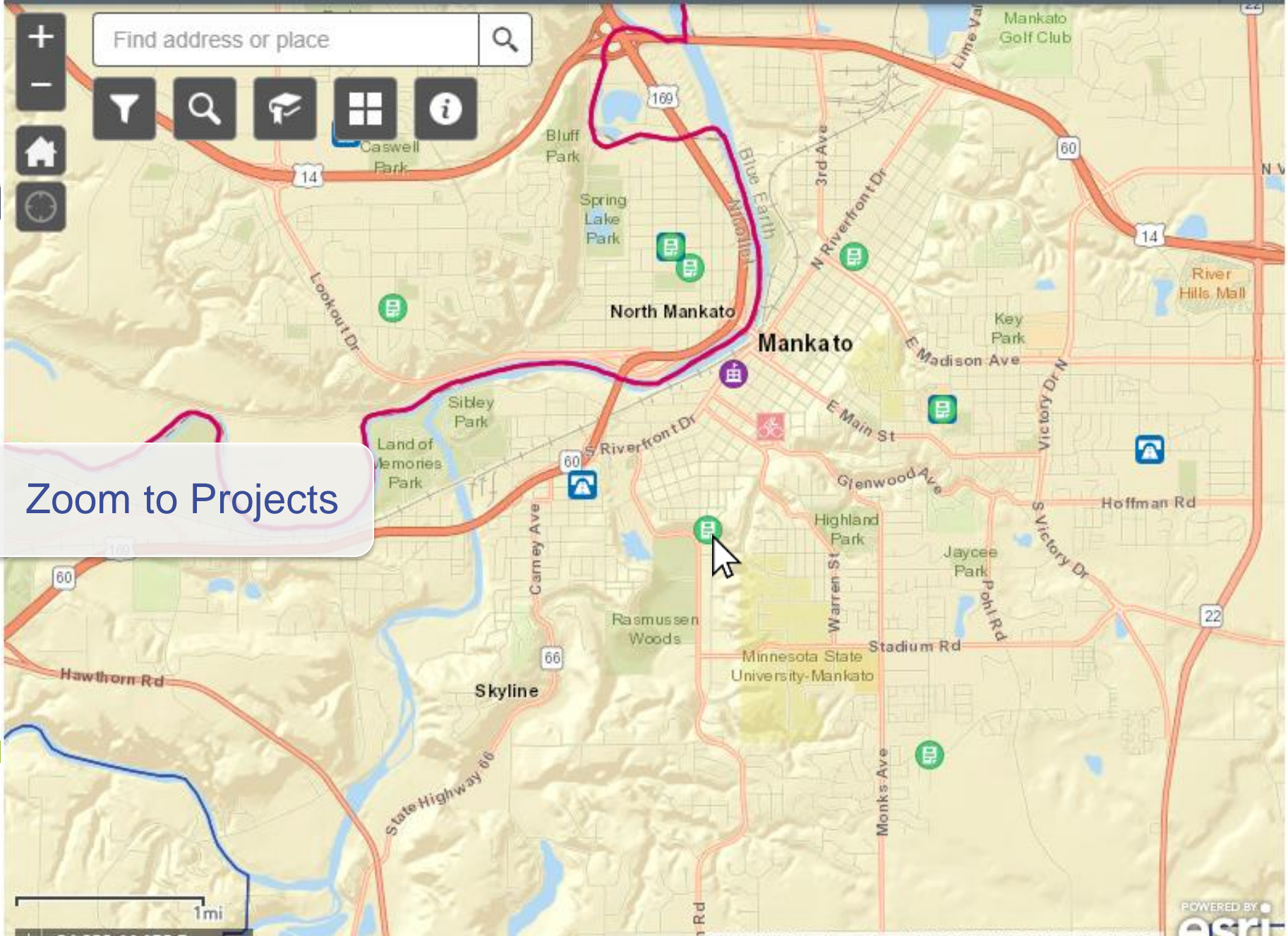
6mi
-94.22344 130 Degrees



Visualizing Safe Routes to School in MN



Find address or place



Zoom to Projects

1mi
-94.028 44.152 Degrees

Visualizing Safe Routes to School in MN

Find address or place

+ - 🔍 🎓 🏠 🔄

Pop Up Data

(1 of 22) ▶ □ ×

SRTS Projects: Mankato Public Schools

Award Year	2012
Project Type	Non-infrastructure
Schools Affected	Jefferson Elementary
Project Location	Jefferson Elementary
Property Address	100 James Ave, Mankato, MN 56001
ISD	77
Total Enrollment	250
Free and Reduced Lunch Percentage	39.60
MnDOT District	7
Project Description	SRTS Planning Assistance
Category	Planning Assistance

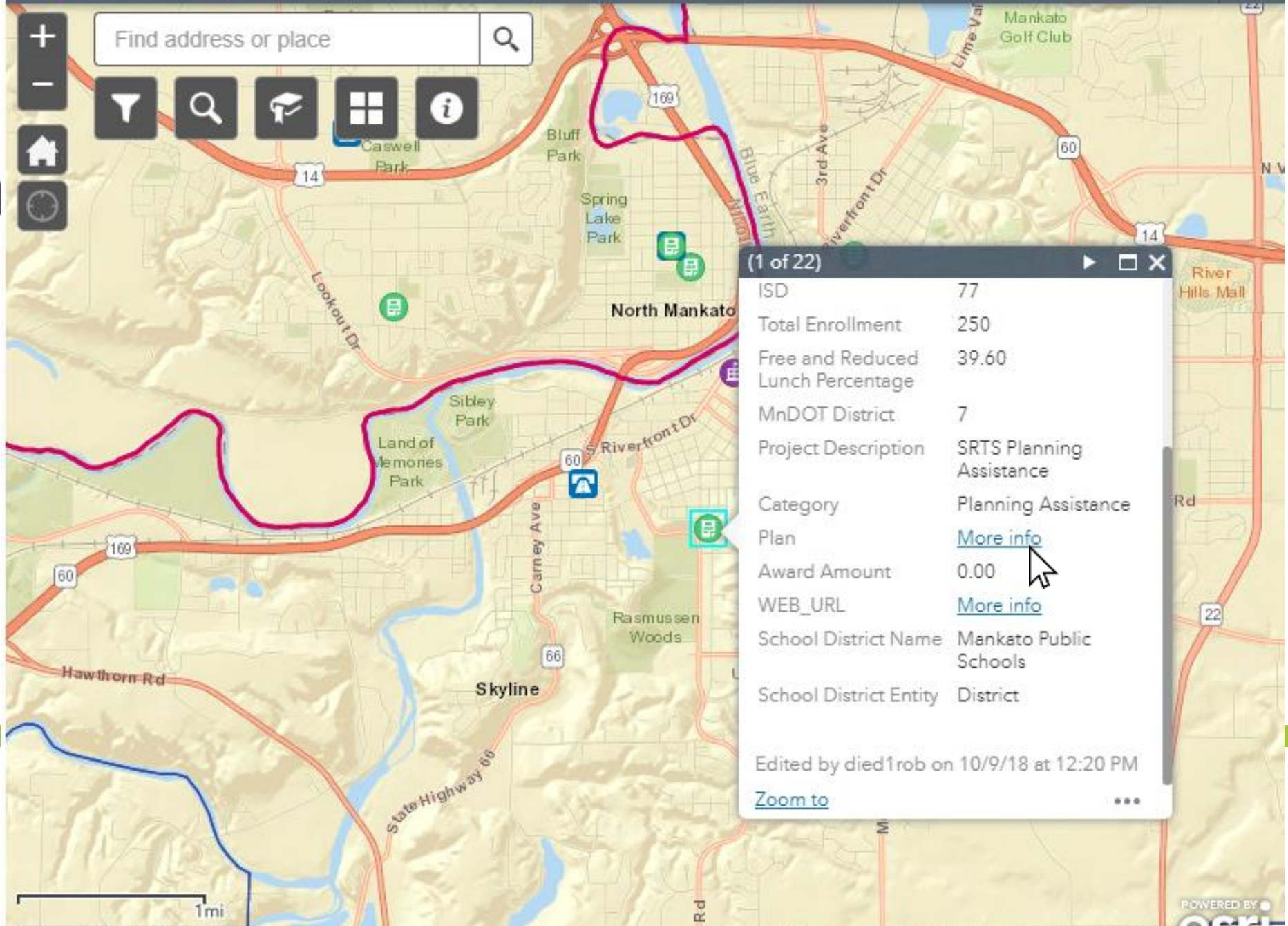
[Zoom to](#) ⋮



Visualizing Safe Routes to School in MN



Find address or place



(1 of 22) ▶ □ ✕

ISD	77
Total Enrollment	250
Free and Reduced Lunch Percentage	39.60
MnDOT District	7
Project Description	SRTS Planning Assistance
Category	Planning Assistance
Plan	More info
Award Amount	0.00
WEB_URL	More info
School District Name	Mankato Public Schools
School District Entity	District

Edited by died1rob on 10/9/18 at 12:20 PM

[Zoom to](#) ⋮





**Mankato Area Public School's
Safe Routes to School Plan**

Prepared by
Region Nine Development Commission
For
The Mankato Area Public Schools

Upon request, information in this plan is available in alternate formats by contacting the author of the plan.



.gov



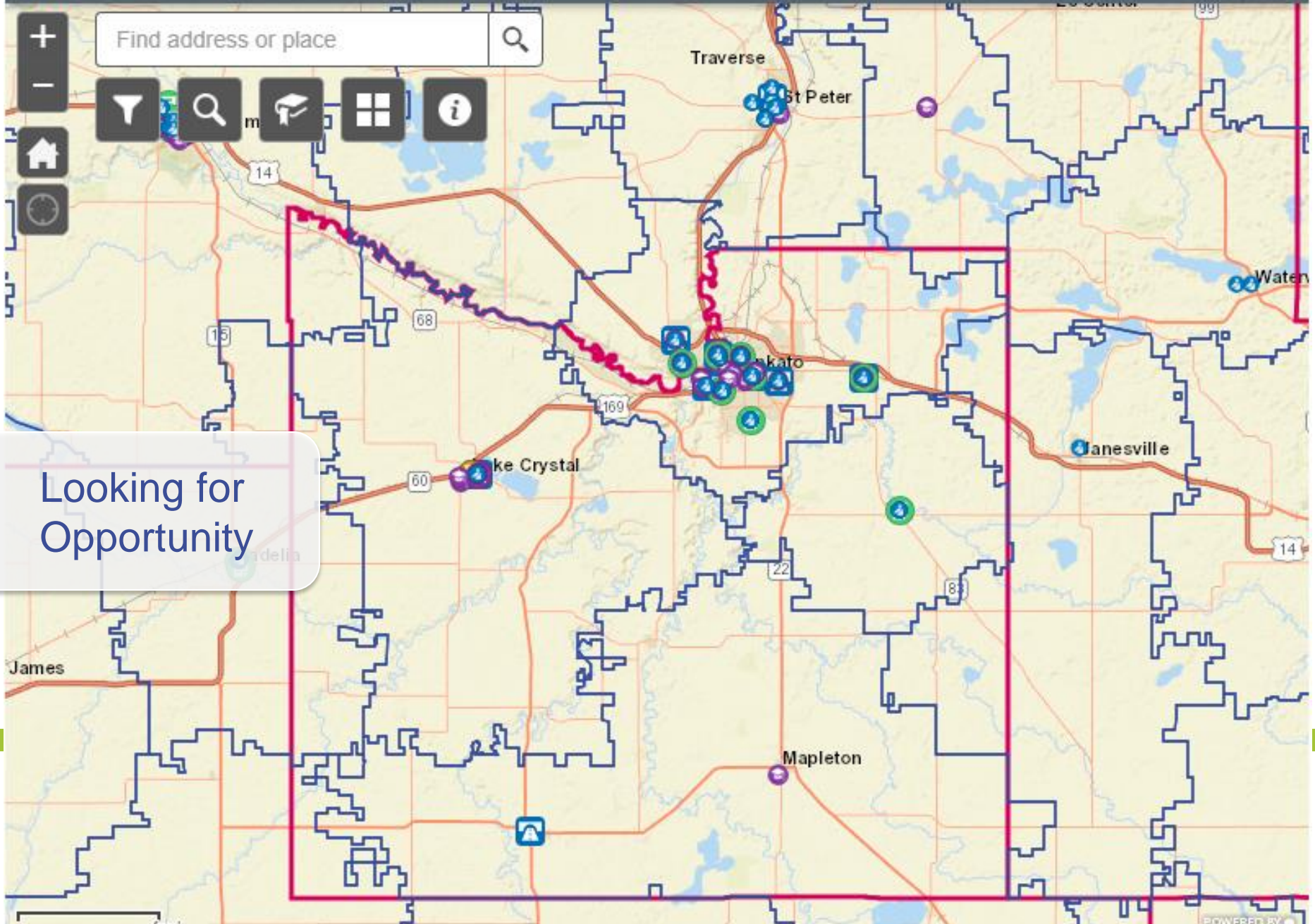
Visualizing Safe Routes to School in MN



Find address or place

+
-
Home
Refresh

Filter
Search
Map
Layers
Info



Looking for Opportunity

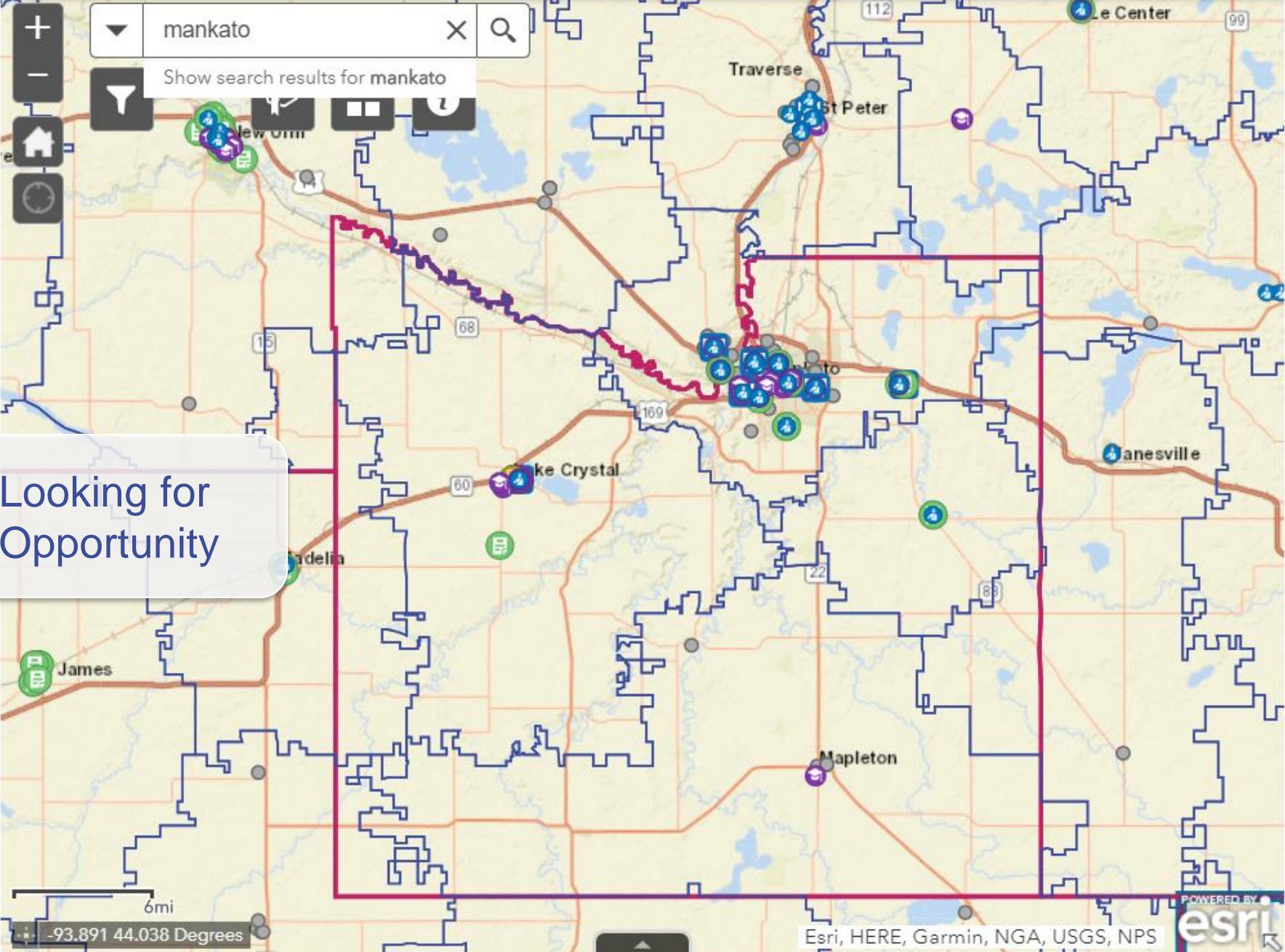
James

6mi

POWERED BY



Visualizing Safe Routes to School in MN



mankato

Show search results for mankato

Looking for Opportunity

6mi
-93.891 44.038 Degrees

POWERED BY
esri
Esri, HERE, Garmin, NGA, USGS, NPS



Visualizing Safe Routes to School in MN



Find address or place



MnDOT Project Manager/City or County Engineer/Planner

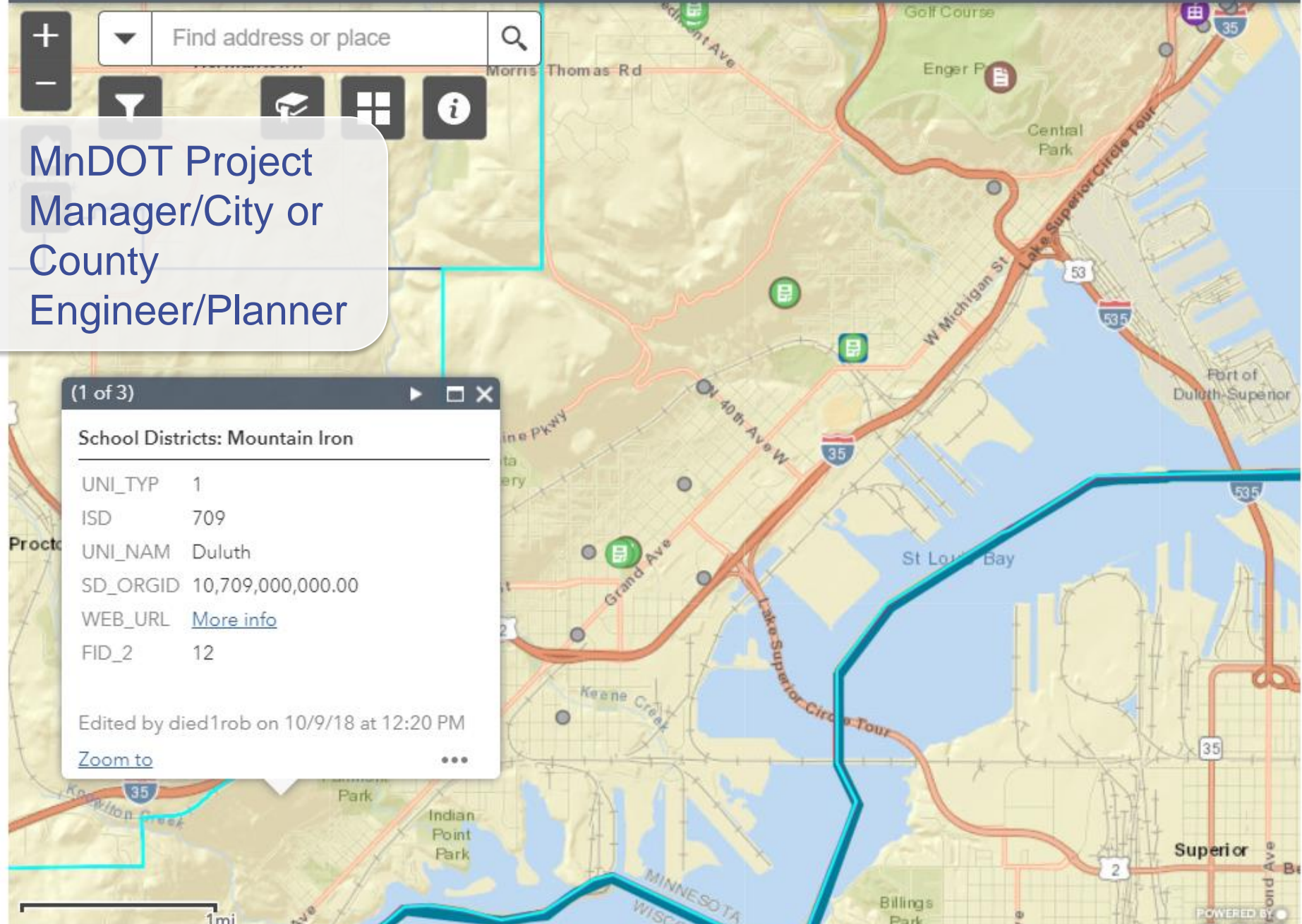
(1 of 3) ▶ □ ✕

School Districts: Mountain Iron

UNI_TYP	1
ISD	709
UNI_NAM	Duluth
SD_ORGID	10,709,000,000.00
WEB_URL	More info
FID_2	12

Edited by died1rob on 10/9/18 at 12:20 PM

[Zoom to](#) ⋮





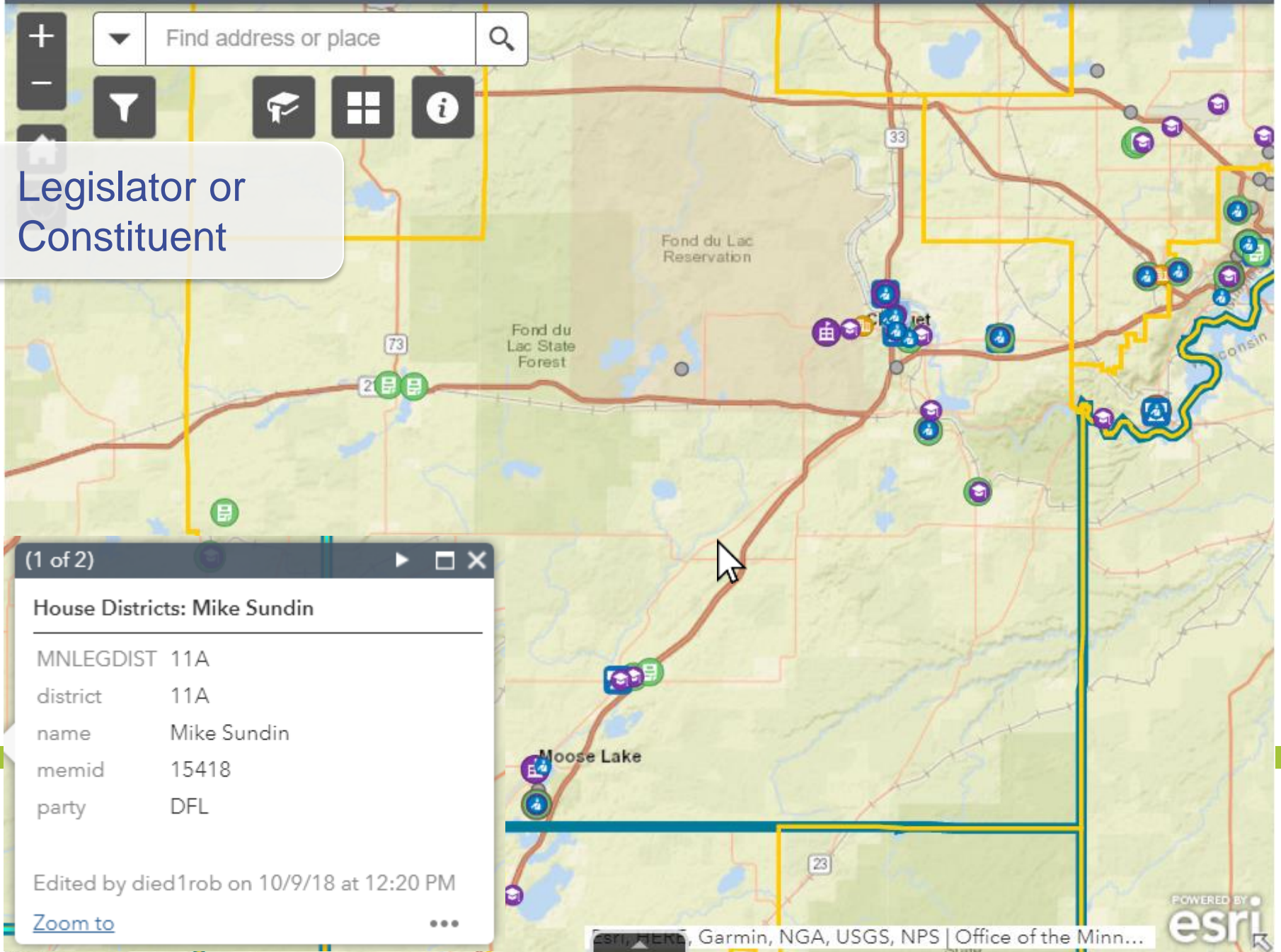
Visualizing Safe Routes to School in MN



+ Find address or place



Legislator or
Constituent



(1 of 2)

House Districts: Mike Sundin

MNLEGDIST	11A
district	11A
name	Mike Sundin
memid	15418
party	DFL

Edited by died1rob on 10/9/18 at 12:20 PM

[Zoom to](#)



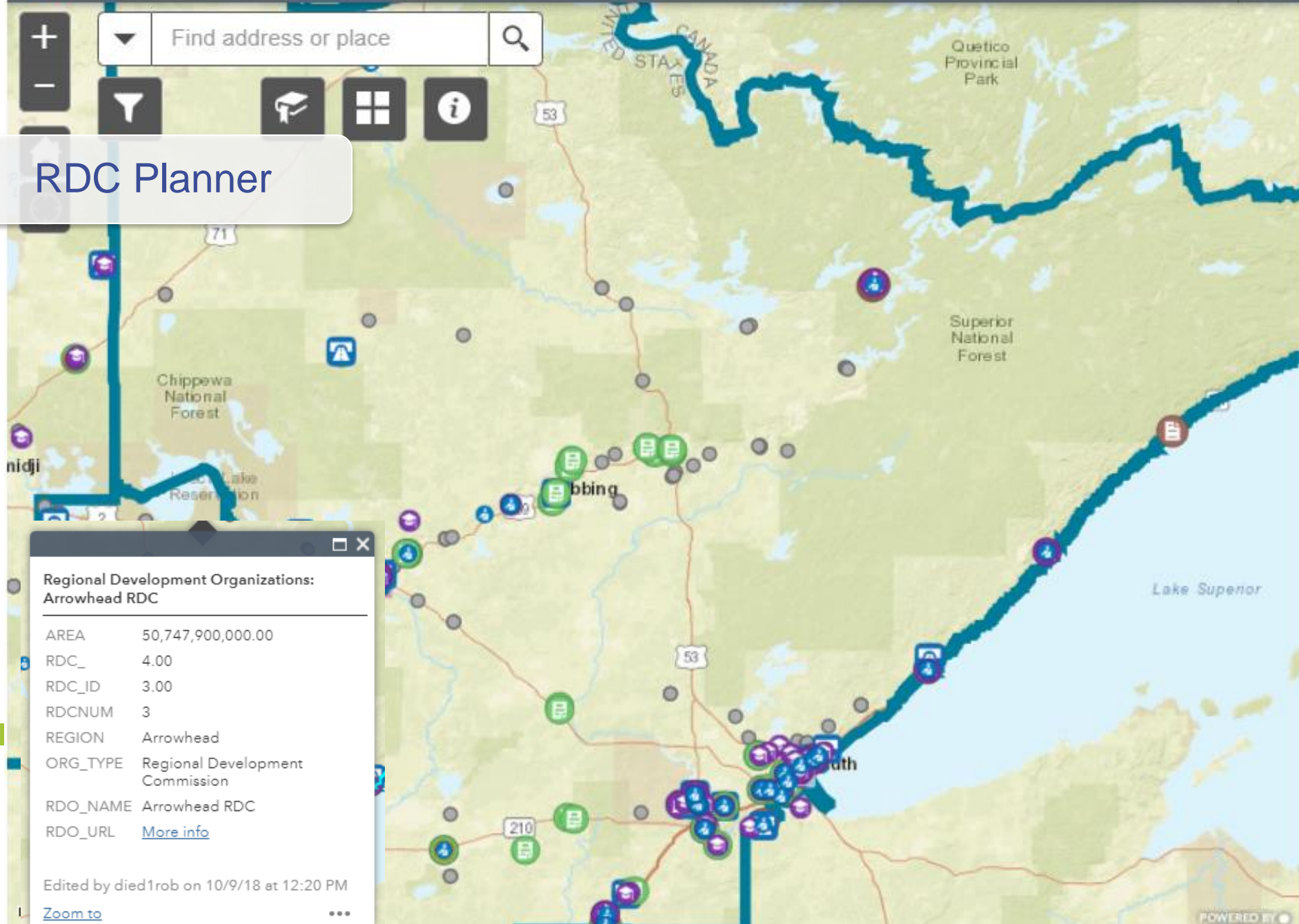
Visualizing Safe Routes to School in MN



Find address or place



RDC Planner



Regional Development Organizations: Arrowhead RDC

AREA	50,747,900,000.00
RDC_	4.00
RDC_ID	3.00
RDCNUM	3
REGION	Arrowhead
ORG_TYPE	Regional Development Commission
RDO_NAME	Arrowhead RDC
RDO_URL	More info

Edited by died1rob on 10/9/18 at 12:20 PM

[Zoom to](#)

**Visualizing SRTS in
Minnesota:
Unexpected Uses**

Visualizing Safe Routes to School in MN

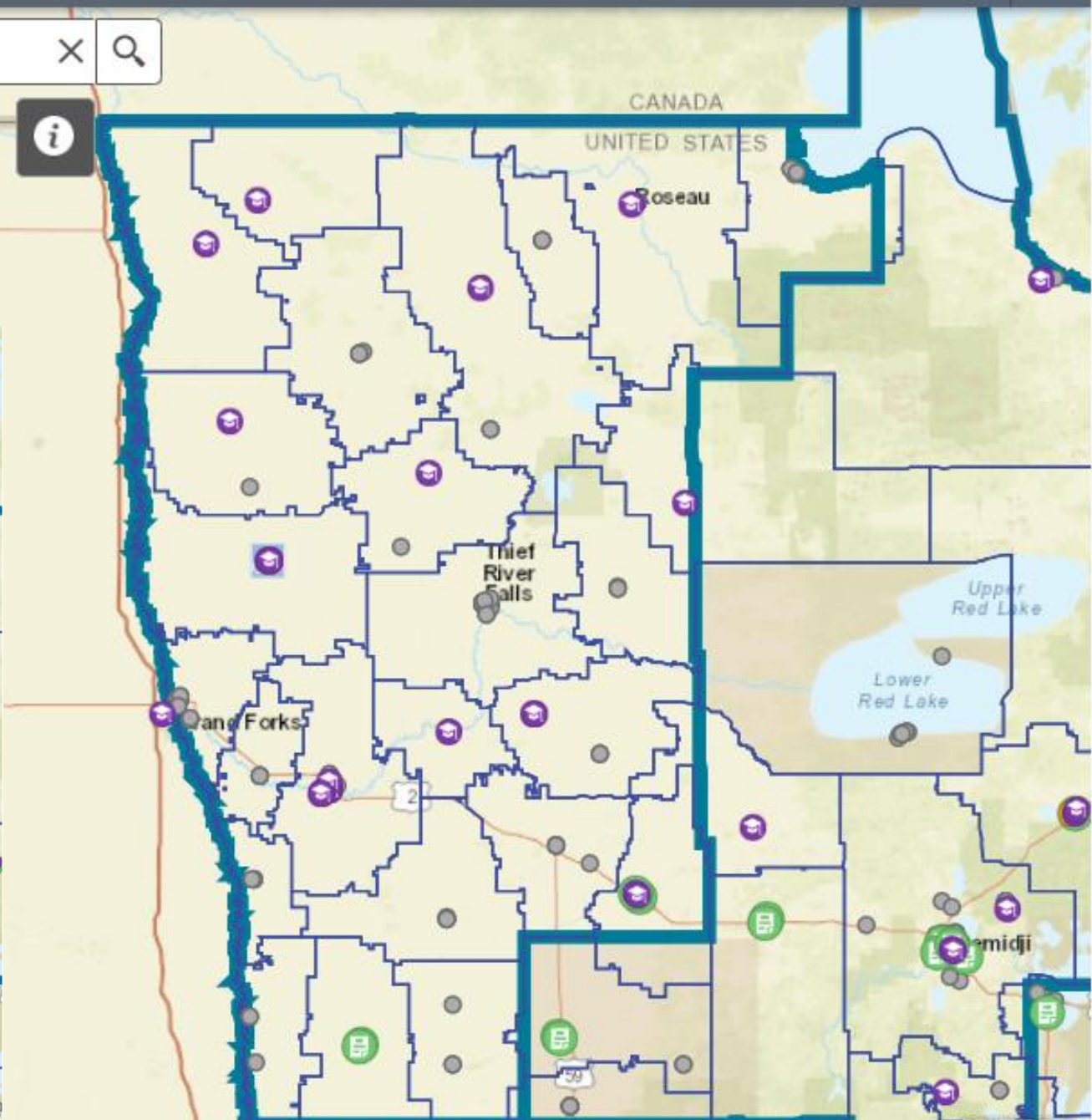


Map navigation controls including a zoom in (+) and zoom out (-) button, a search bar containing the text "mankato", a search icon, a funnel icon, a school icon, a grid icon, and an information icon.

Bike Fleet Use

Legend

- Walk! Bike! Fun! Trainees (Purple circle with person icon)
- Walk! Bike! Fun! Training Host Sites (Orange circle with person icon)
- MnDOT-Funded SRTS Projects
 - Planning Assistance (Green square with person icon)
 - Infrastructure (Blue square with person icon)
 - Other Non-Infrastructure (Purple square with person icon)
 - Bicycle Fleet (Blue square with bicycle icon)
- Non MnDOT Funded Bike Fleets (Red square with bicycle icon)
- Plans Funded Outside MnDOT's SRTS Program (Brown square with person icon)
- School Locations (Grey circle)
- School Districts (Blue outline)





Visualizing Safe Routes to School in MN



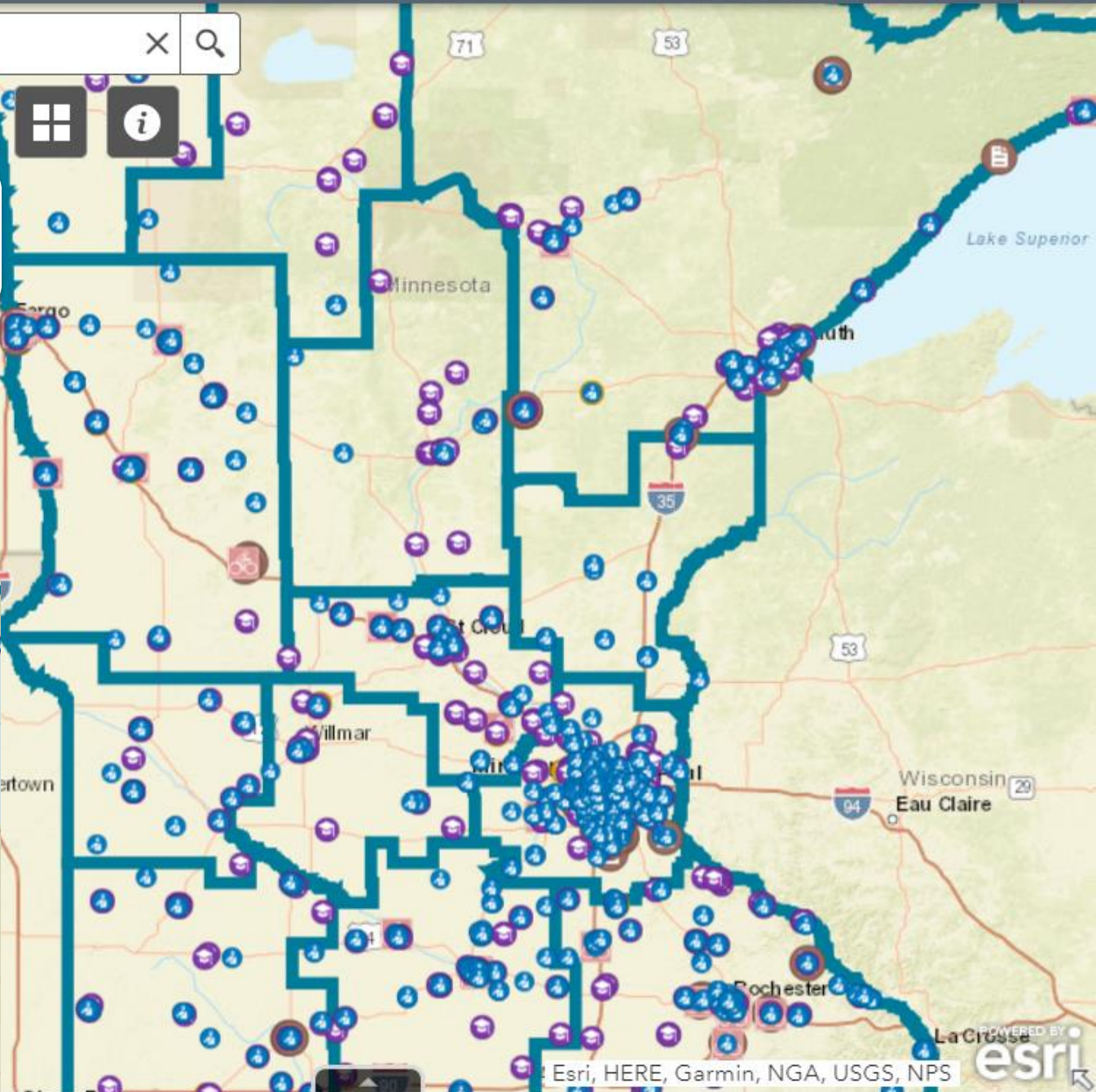
Search bar containing the text "mankato" and search icons.



Walk/Bike/Fun Trainings

Legend

- Participation in Bike/Walk Events
- Walk! Bike! Fun! Trainees
- Walk! Bike! Fun! Training Host Sites
- Non MnDOT Funded Bike Fleets
- Plans Funded Outside MnDOT's SRTS Program
- Regional Development Organizations



Visualizing SRTS in Minnesota

Objective: To create an interactive, visual, easy to use source for information on SRTS projects around the state.

Goals:

1. Accurately represent the scope and geographic distribution of past work
2. Increase the accessibility of completed plans
3. Demonstrate the local impact of constructed projects
4. Improve the financial transparency of the Safe Routes to School program
5. Provide a wide array of lenses to understand where and what type of projects have been implemented across Minnesota

Audiences:

1. MnDOT SRTS Staff
2. MnDOT Project Managers
3. School Staff
4. Elected Officials
5. Public Health Professionals (SHIP)
6. Community Members and Parents
7. Students?

QUESTIONS?



Dave Cowan
SRTS Coordinator
Dave.cowan@state.mn.us

