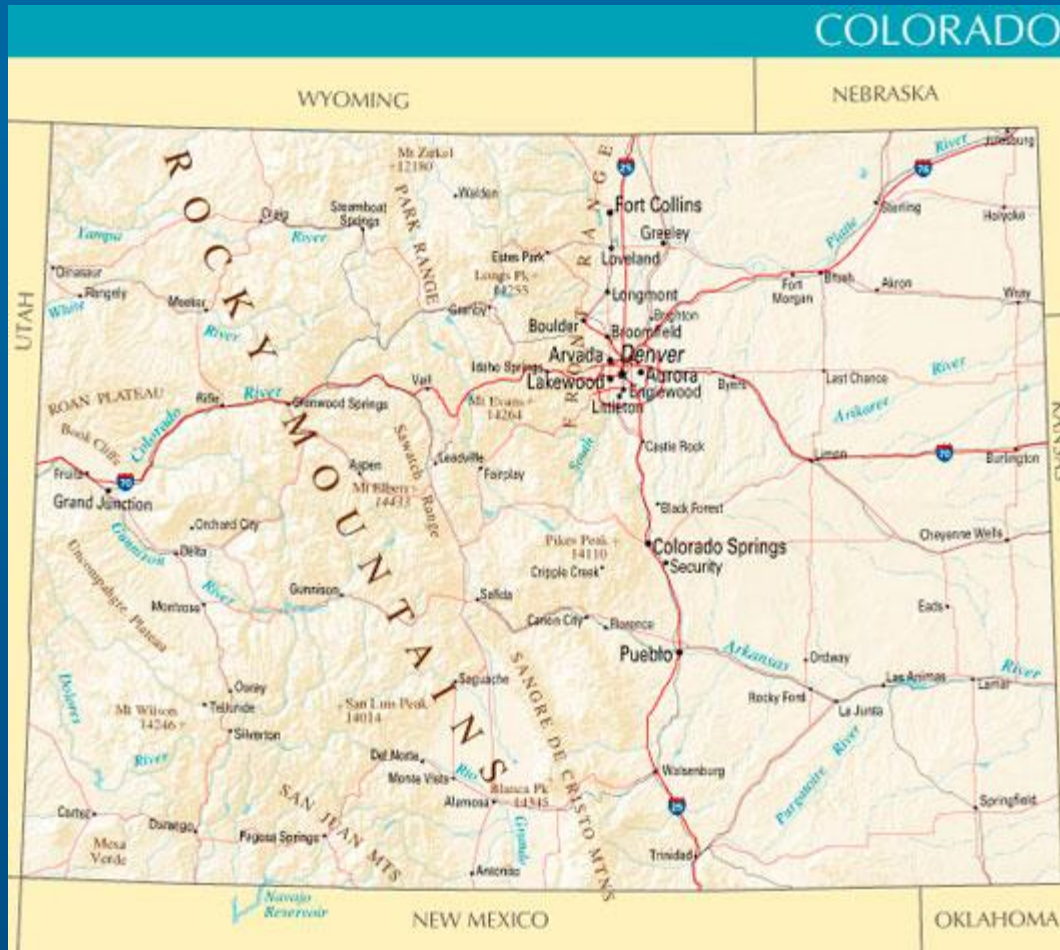


Safe Routes to School As a Function of Municipal Transportation



Nancy Nichols, Safe Routes to School Coordinator
City of Fort Collins, Colorado

Where in the world is Fort Collins?



Facts about SRTS coordinator position

- Resides within FC Moves Department
- FC Moves components:
 - ✓ Transportation Planning
 - ✓ FC Bikes
 - ✓ FC Walks (coming soon)
 - ✓ Safe Routes to School
- FC Moves in same division as:
 - ✓ Long-range planning
 - ✓ Traffic operations
 - ✓ Streets
 - ✓ Transport transit system and MAX bus rapid transit
 - ✓ Engineering
 - ✓ Parking services



FC Moves' mission

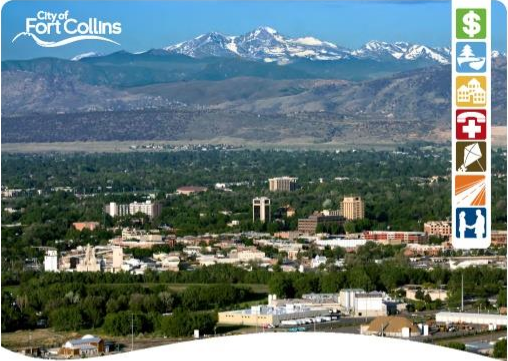
Balancing safe transportation choices for local residents, whether they choose to go by bike, on foot, by bus, or by car.



(And by trolley!).

FC Moves is dedicated to developing efficient solutions for all modes of travel throughout Fort Collins.


Planning documents guiding our efforts




City of Fort Collins

City Plan Fort Collins

February 15, 2011




innovate·sustain·connect




City of Fort Collins

Transportation Master Plan Fort Collins

February 15, 2011




innovate·sustain·connect



City of Fort Collins

Pedestrian Plan Fort Collins

February 15, 2011



innovate·sustain·connect

More planning documents...

2008 Bicycle Plan
Update to the 1995 Bicycle Program Plan

City of Fort Collins
October 2008

City of Fort Collins

Bicycle Safety Education Plan 2011

City of Fort Collins **FCBIKES** saferoutes TO SCHOOL

Funding provided by

KEEP FORT COLLINS GREAT

tax initiative

- .085 cents, 2011–2021, about \$20 million annually
- 33% Street Maintenance and Repair
- 17% Other Transportation Needs
- 17% Police Services
- 11% Poudre Fire Authority
- 11% Parks Maintenance and Recreation Services
- 11% Other Community Priorities



Funding provided by

KEEP FORT COLLINS GREAT

tax initiative



- .085 cents, 2011–2021, about \$20 million annually
- 33% Street Maintenance and Repair
- 17% Other Transportation Needs
(includes Safe Routes to School)
- 17% Police Services
- 11% Poudre Fire Authority
- 11% Parks Maintenance and Recreation Services
- 11% Other Community Priorities

Funding also provided by

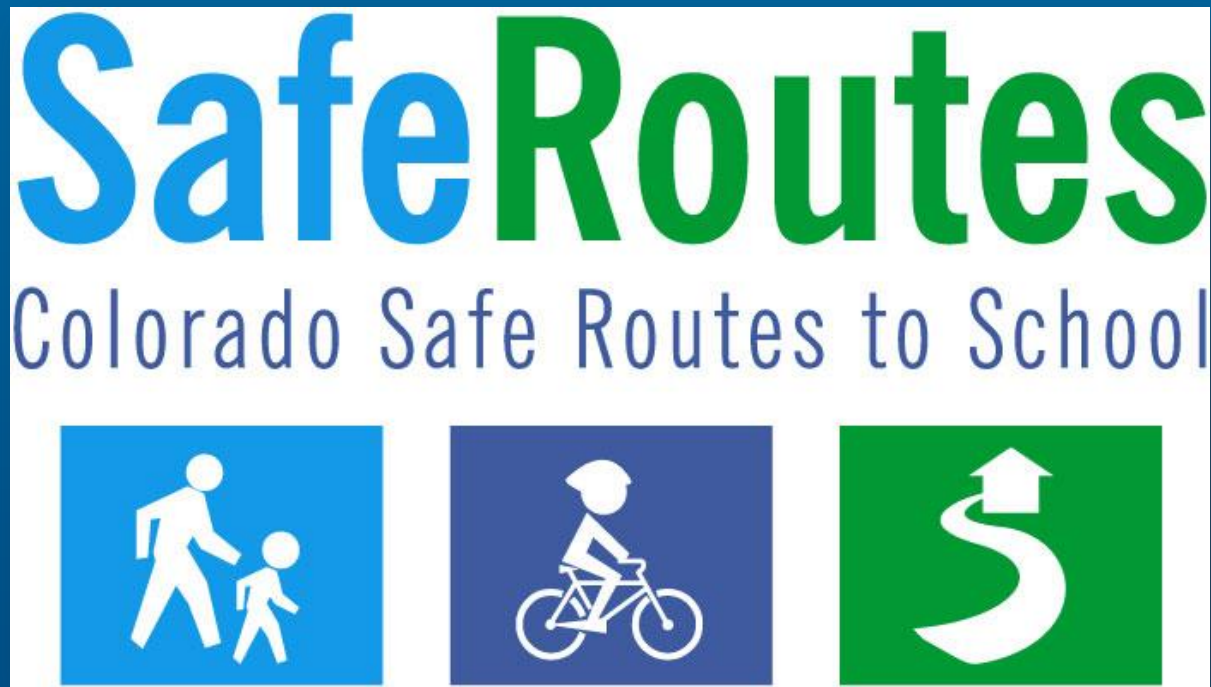
Building on Basics

tax initiative

- .025 cents, 2006–2015, \$57.6 million total
- Funded “Pedestrian Needs Assessment” by Engineering Dept.
- Prioritization for pedestrian projects in proximity of schools



Major funding also provided through grants



City qualities encouraging innovative services

- Talented, informed, engaged community members who push City government to excel
- Strong outdoor culture: being outdoors is highly USUAL
- Strong biking culture: Platinum Bicycle Friendly Community in second most bicycle-friendly state
- Growing walking culture: Bronze Walk Friendly Community



City qualities encouraging innovative services



- Supportive City leadership: mayor, city manager, council
- “World-class community”:
City manager’s mantra
- “Budgeting for outcomes”
and “triple bottom line”:
City’s financial and governance
processes

City government's vision/mission/values

Vision

- We are passionate about creating a vibrant, world-class community.

Mission

- Exceptional service for an exceptional community.

Values

- Outstanding Services
- Innovation and Creativity
- Respect
- Integrity
- Initiative
- Collaboration and Teamwork
- Stewardship



Budgeting for outcomes

- ✓ **Economic Health** – Healthy, sustainable economy reflecting community values.
- ✓ **Environmental Health** – Healthy and sustainable environment.
- ✓ **Community and Neighborhood Livability** – High-quality built environment and quality, diverse neighborhoods.
- ✓ **Safe Community** – Safe place to live, work, learn, and play.
- ✓ **Culture and Recreation** – Diverse cultural and recreational amenities.
- ✓ **High-performing Government** – Efficient, innovative, transparent, effective, collaborative City government.
- ✓ **Transportation** – Safe, reliable multimodal travel to, from, & throughout the City.

Triple Bottom Line



SRTS partnerships



City of Fort Collins

- FC Moves
- Traffic Operations
- Streets
- Engineering
- Police Services
- Natural Resources
- Park Planning
- Recreation
- Sustainability



Local schools and school districts

- Poudre and Thompson school districts
- Principals, teachers, students
- Parents, wellness teams, PTOs/PTAs
- Crossing guards
- Volunteers



More community partners...



Bicycle and pedestrian organizations

Bicycle and Pedestrian Education Coalition
Bike Fort Collins
Fort Collins Bike Co-op
Bicycle Colorado

Businesses & community organizations

Bike shops and other businesses
Boys and Girls Clubs of Larimer County
Volunteers of America

Health organizations

Safe Kids Larimer County (Strap & Snap Program)
Healthier Communities Coalition
Coalition for Activity and Nutrition to Defeat Obesity
Healthy Kids Club
EMT Reserves
Larimer County Department of Health and Environment

Key accomplishments



- Crossing-guard program
- Sidewalk and street-crossing improvements
- Traffic-calming measures
- Active enforcement in school zones
- Assistance with school walking and biking activities



Key accomplishments



- Biking and walking safety instruction for kids and parents
- Train-the-trainers program
- Safe Routes bike fleet (53 bikes)
- Forty new bike racks at 10 to 15 elementary and middle schools
- Free helmets for low-income students and parents
- New multiuse path to Tavelli Elementary (to be completed by fall 2015).
- Inclusion of high schools in locally funded programming

Outlook for future



- ✓ By 2016, at least 50 percent of local schoolchildren will walk or bike to school regularly.
- ✓ Safe Routes to School will reach at least 11,000 schoolchildren annually with educational and encouragement programming.
- ✓ A new online interactive route-mapping tool will launch for families to map safe routes using the latest technology.
- ✓ A new Bicycle and Pedestrian Safety Town will be built, possibly as part of larger VeloPark.
- ✓ Grant funding from health organizations will help offset decreasing federal and state transportation funding.

Contact info



Nancy Nichols, Safe Routes to School Coordinator

City of Fort Collins, Colorado

nnichols@fcgov.com

fcgov.com/saferoutes

970.416.2357

Safe Routes on the Inside

SRTS at the Portland Bureau of Transportation



www.SafeRoutesPortland.org

Gabriel Graff, gabriel.graff@portlandoregon.gov, 503-823-5291

About PBOT

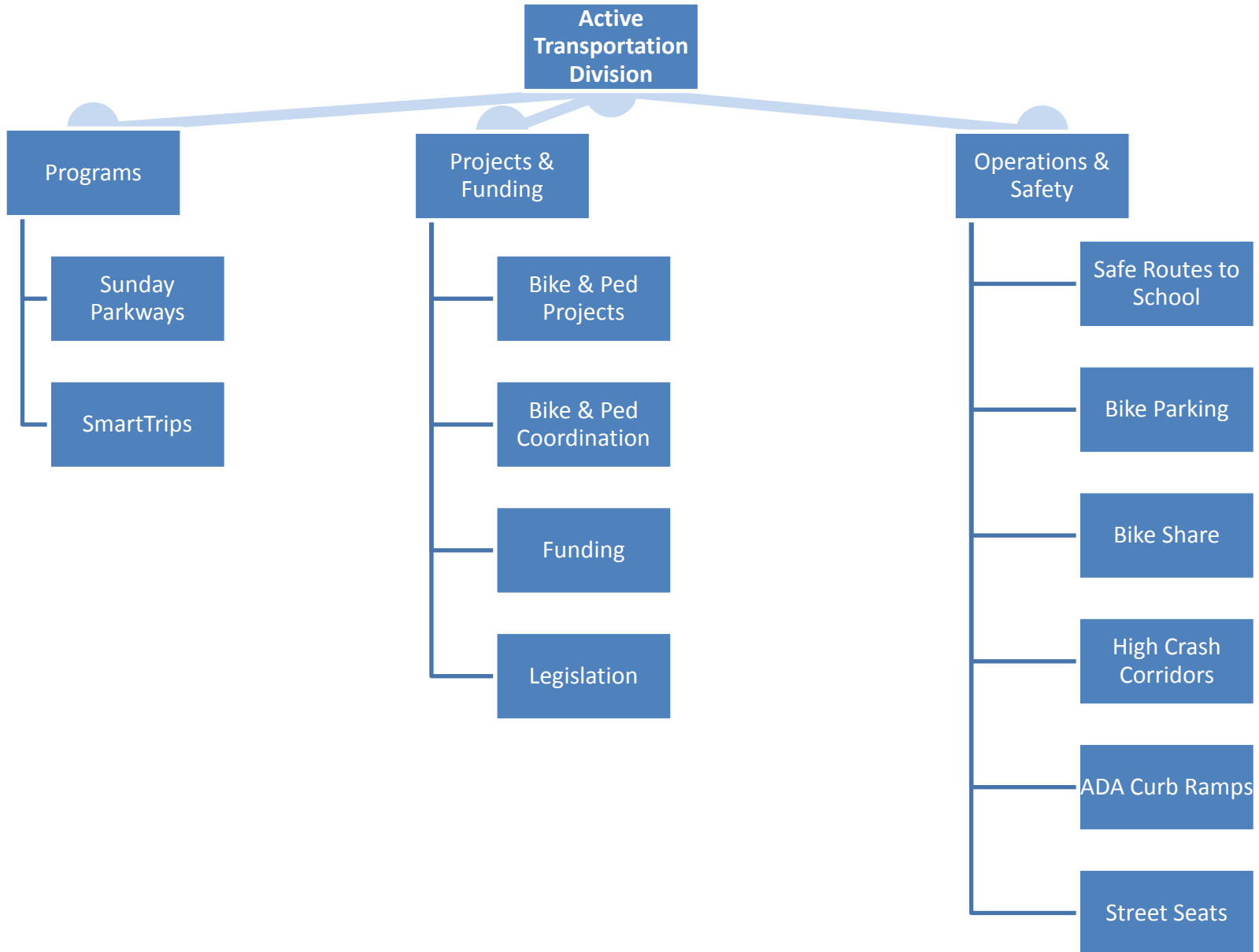
Our Mission Statement

The City of Portland Bureau of Transportation is a community partner in shaping a livable city. We plan, build, manage and maintain an effective and safe transportation system that provides people and businesses access and mobility.

We keep Portland moving.



Our Active Transportation Division



Brief History of SRTS in Portland

Community Relations staff hired to respond to growing school traffic safety concerns

Portland Community School and Traffic Safety Partnership established



2000



2001

State of Oregon passes House Bill 3712 (known as the "Safe Routes to School Bill")



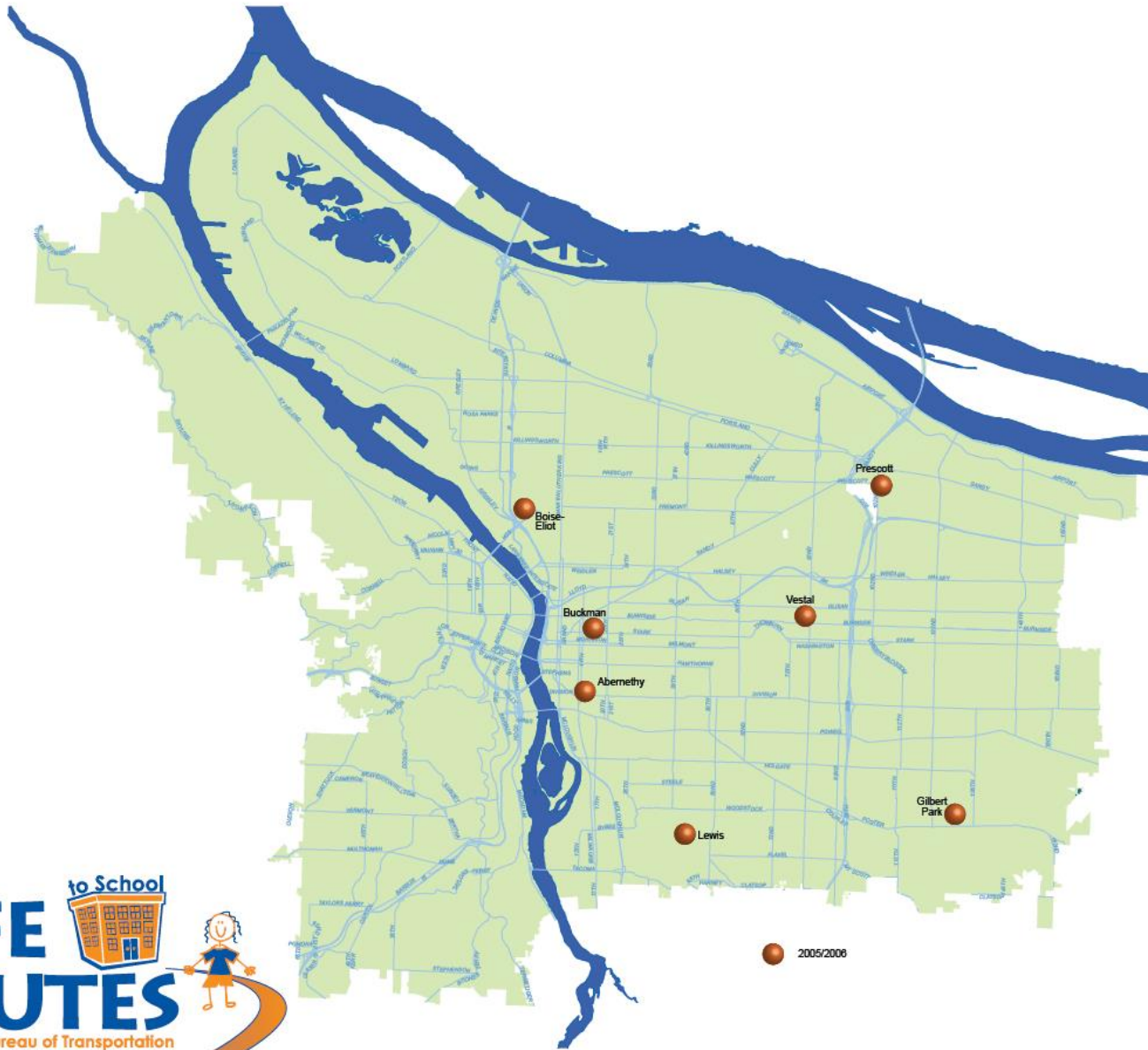
2003



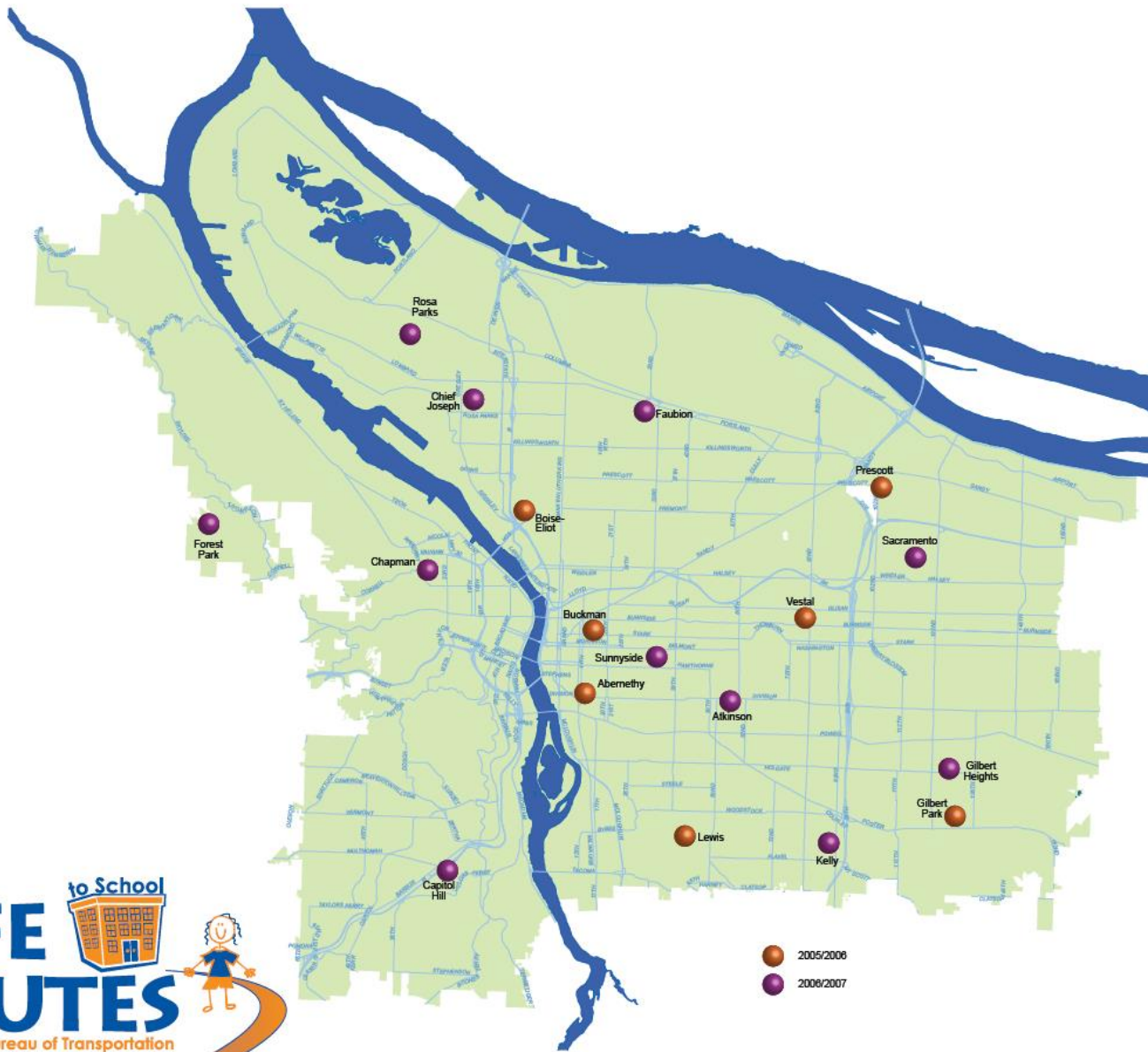
2004

Oregon Health Department funds small pilot projects at 5 schools

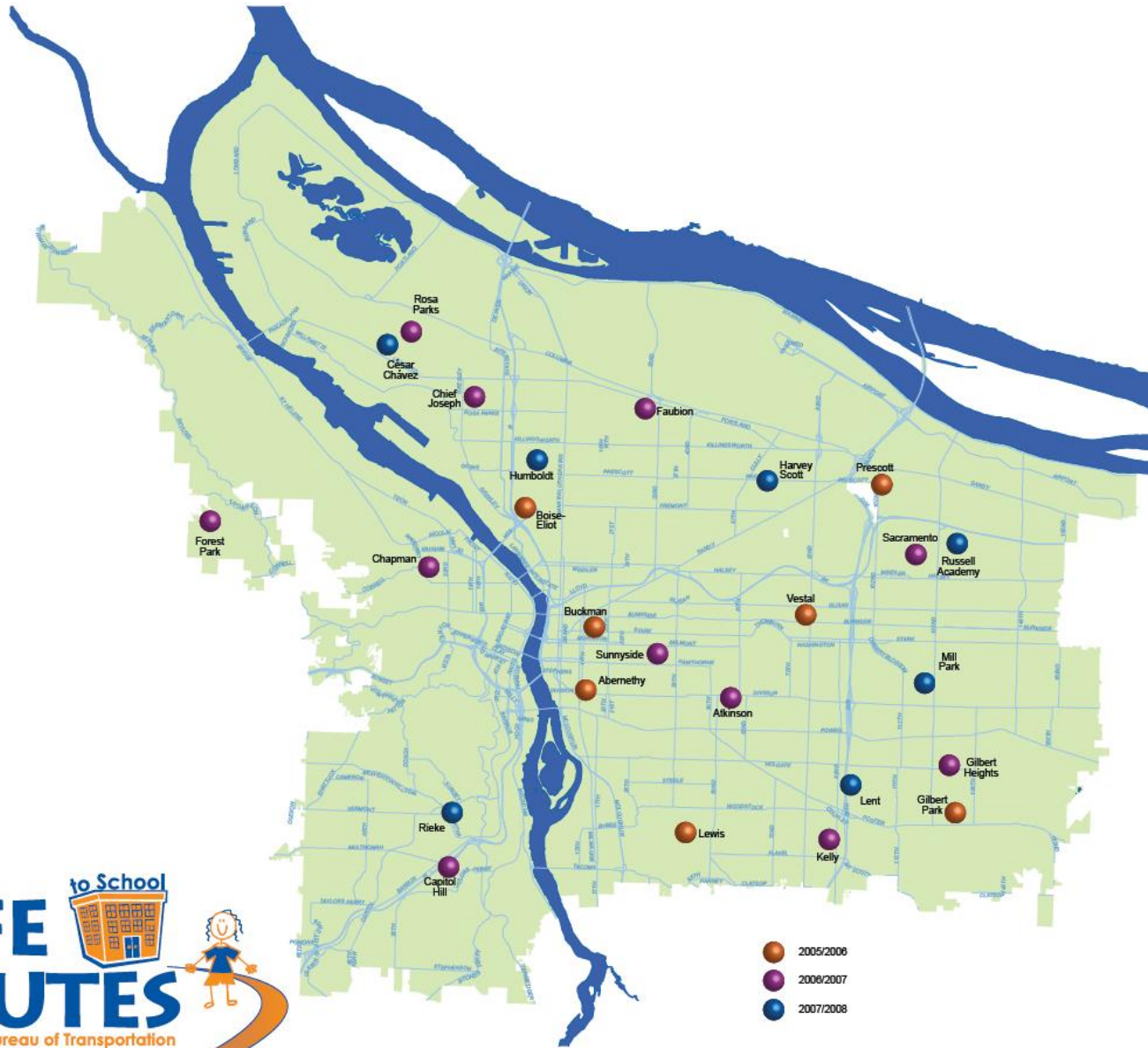




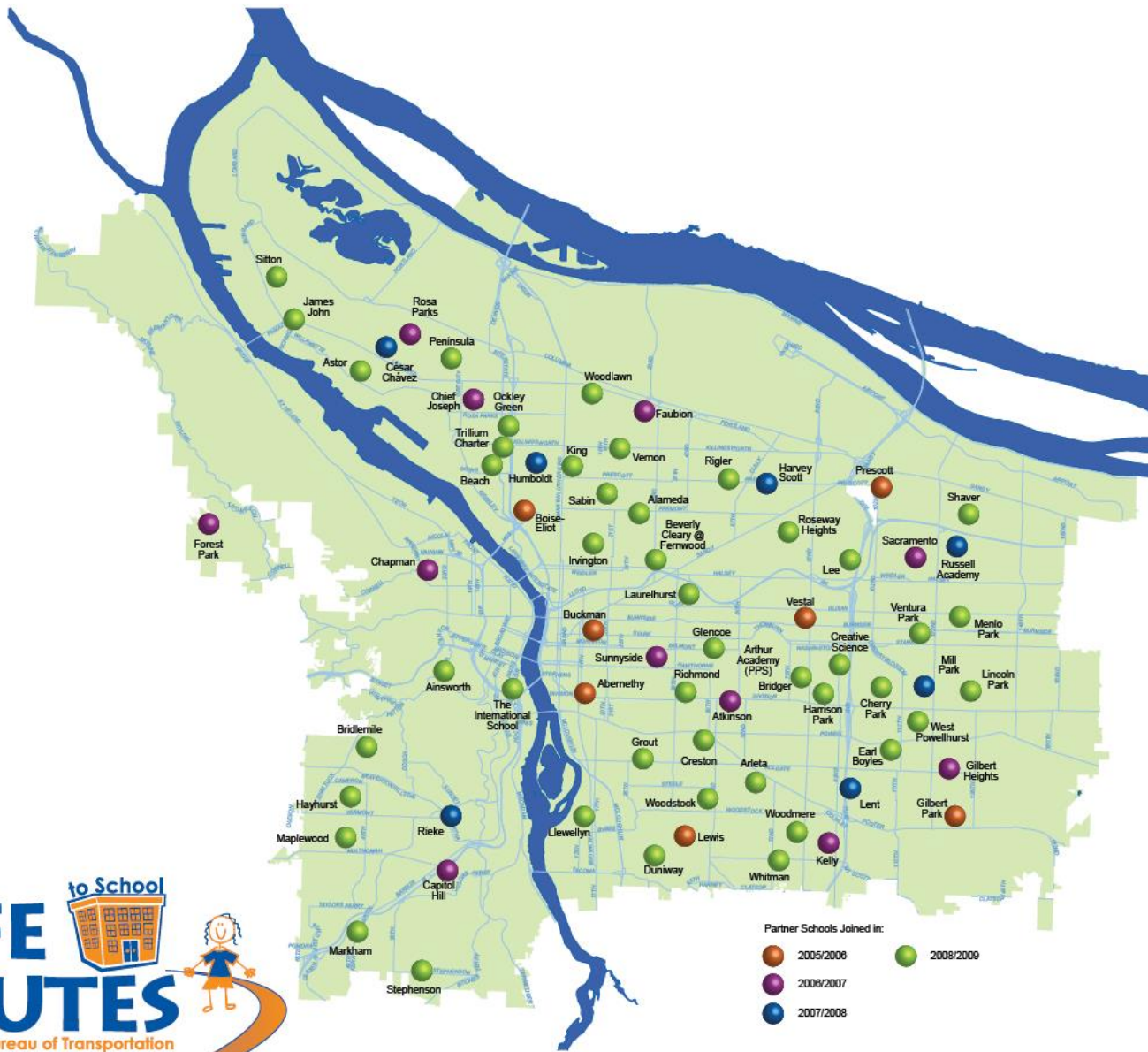
Have fun. Be safe. Grow healthy. Get there.



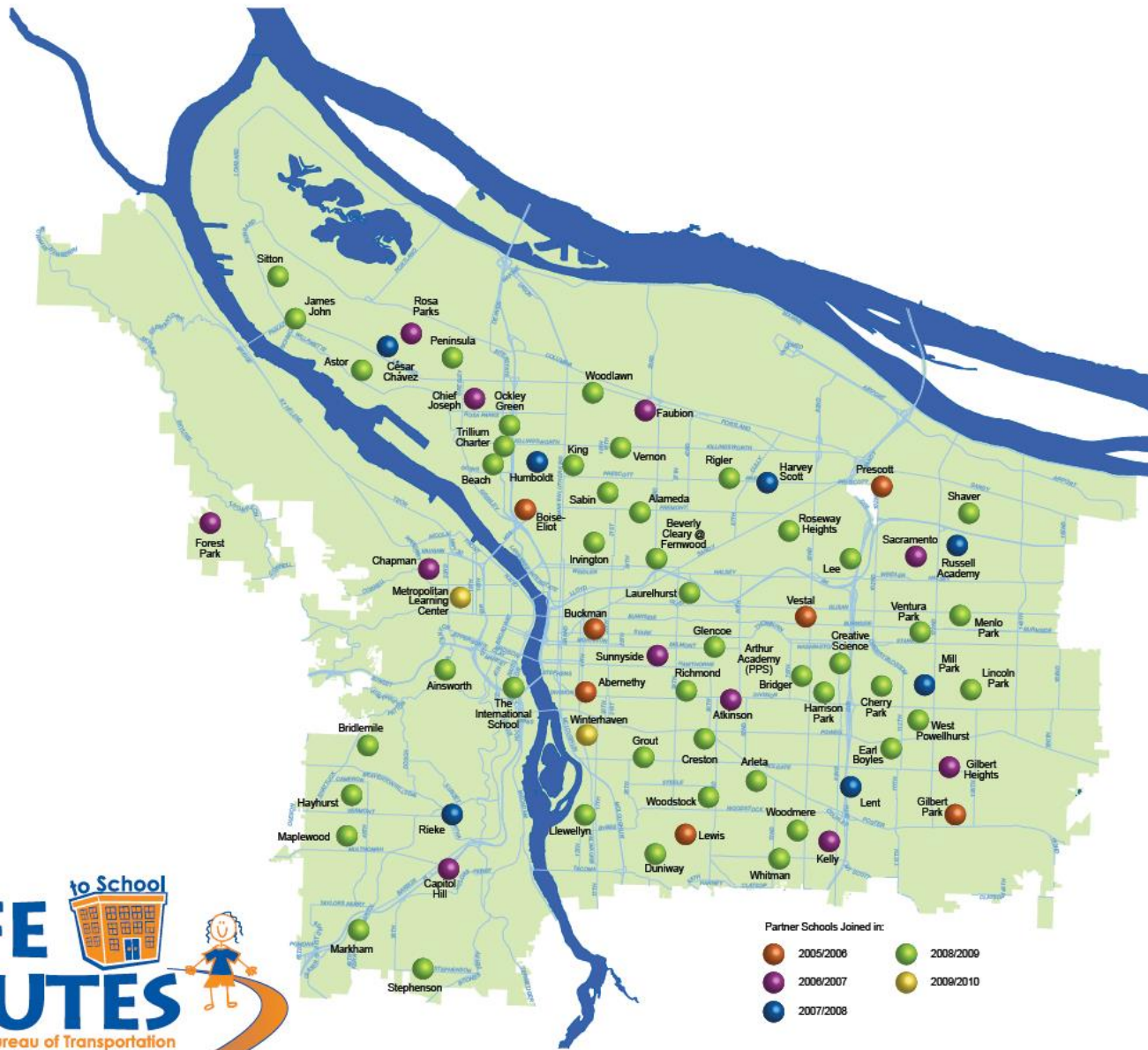
Have fun. Be safe. Grow healthy. Get there.



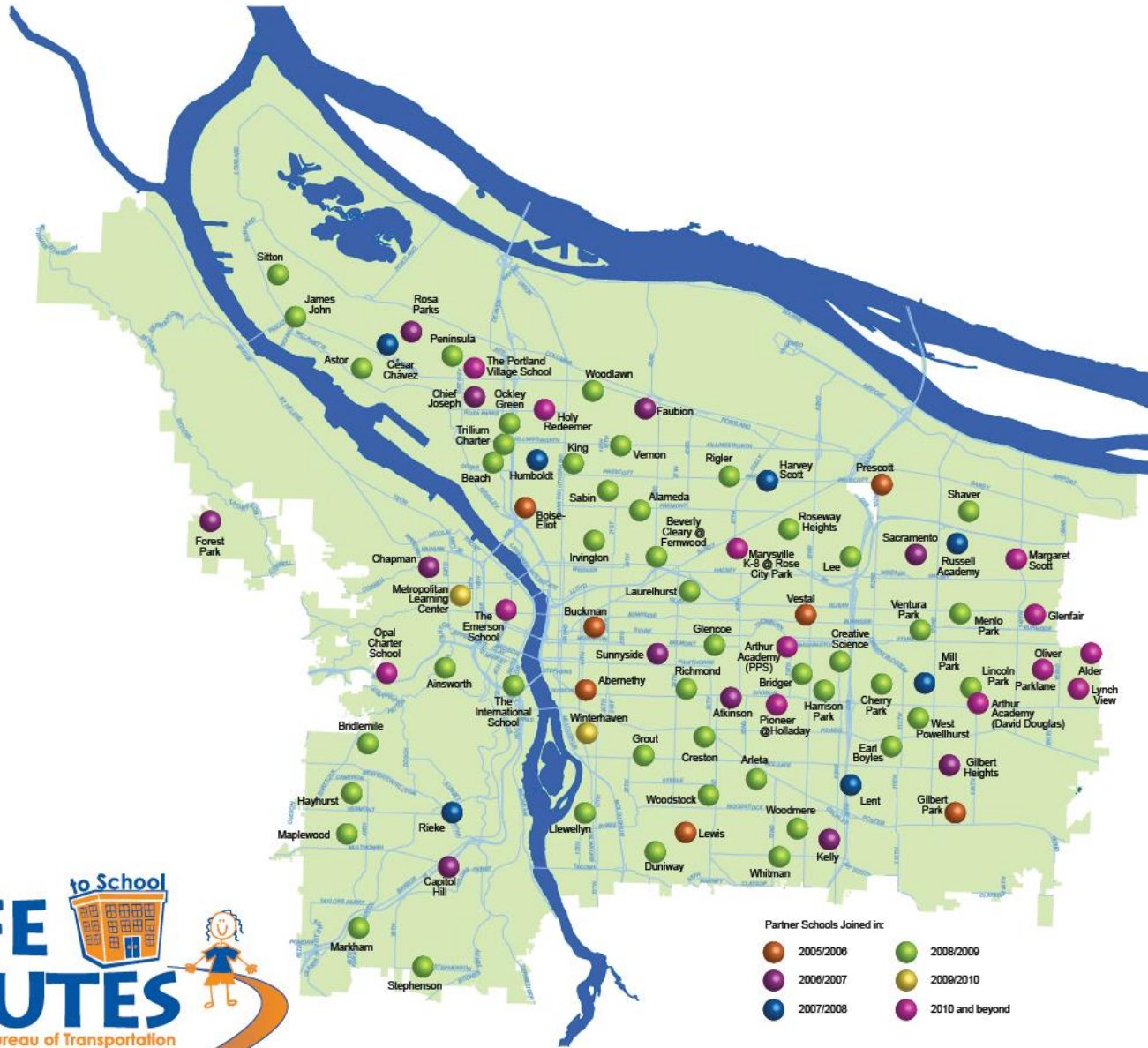
Have fun. Be safe. Grow healthy. Get there.



Have fun. Be safe. Grow healthy. Get there.



Have fun. Be safe. Grow healthy. Get there.



Have fun. Be safe. Grow healthy. Get there.

Safe Routes in Portland

(today)

- Serve 80+ schools with a range of services
- ~2.75 FTE in Transportation Bureau staff
- Contract with the Bicycle Transportation Alliance for pedestrian and bike safety

Dedicated Funding Efforts

2002

- Pursued “Violator Pays Initiative” to raise traffic fines. Failed.

2003

- Oregon Legislature raises traffic fines. Portland City Council dedicates increased revenue to Traffic Safety Account.
- Traffic Safety Account funds dedicated to SRTS, Adult Ped. & Bike Safety, and Reducing Driver Error.

2009

- Oregon Legislature raises the gas tax for the first time since 1993 via House Bill 2001.
- Portland Bureau of Transportation sets aside a portion of increased funds for Safe Routes capital projects.



Suggestions for getting SRTS

(within a municipal transportation dept.)

- Figure out what's not working for the transportation department (safety, schools, coordination, communication?) and design a position that fixes those problems
- Ensure the position will add value for the transportation department
- Ensure there is public recognition of this value
- Use early success to lobby for sustainable funding



Policy

City of Portland Safe Routes to School Policy



March 2012

Portland
Plan
(2011)

City of Portland
Comprehensive Plan
(2012)

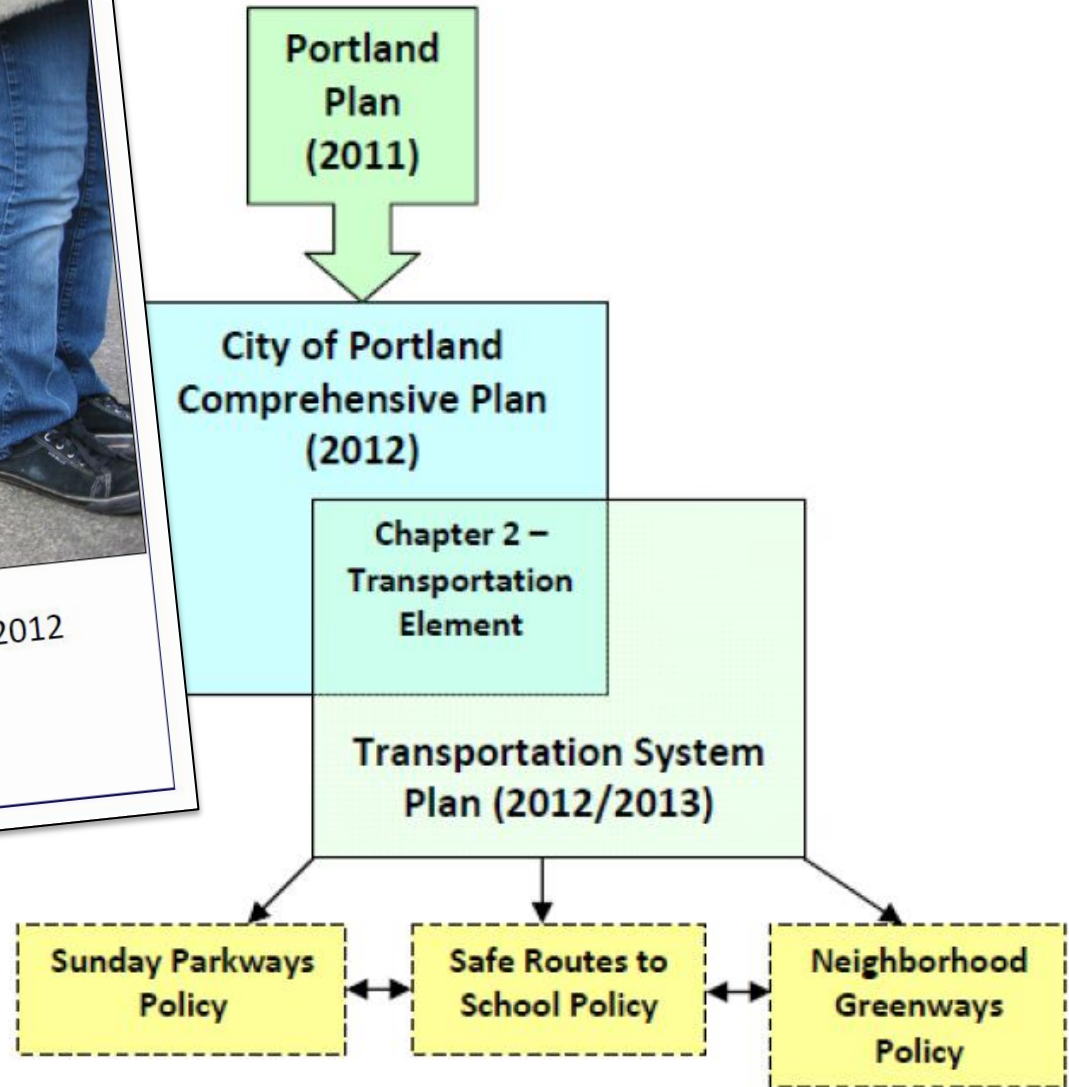
Chapter 2 –
Transportation
Element

Transportation System
Plan (2012/2013)

Sunday Parkways
Policy

Safe Routes to
School Policy

Neighborhood
Greenways
Policy



Policy

Strategic Policies

The strategic policies were created by SRTS staff and stakeholders to represent the mission and visions for the SRTS program through 2035. All SRTS efforts should align with these policies. Metrics, objectives, and responsible parties for these strategic policies are details in the complete policy document.



- **Education.** Equitably ensure that all students and their families have access to comprehensive transportation education.



- **Encouraging the Active Trip.** Increase the number of students walking and biking by encouraging active trips to school and other destinations through programming, outreach, and partnerships.



- **Community Involvement and Partnerships.** Grow and maintain a large constituency of diverse and engaged partners, volunteers, and community stakeholders to better serve students and foster a sustainable SRTS program.



- **Planning for Equitable Transportation.** Continually advance coordination between the Portland Bureau of Transportation and agency partners to equitably plan for the active trip.



- **Building and Maintaining Active Routes.** Equitably create transportation infrastructure to assure that walking and biking to school are safe, convenient, accessible, and desirable choices.

Policy

Strategic Policies

The strategic policies were created by SRTS staff and stakeholders to represent the mission and visions for the SRTS program through 2035. All SRTS efforts should align with these policies. Metrics, objectives, and responsible parties for these strategic policies are details in the complete policy document.

Equity Goals

The above goals for Safe Routes to School will be measured citywide and per school. The SRTS program is committed to achieving the goals in all schools, but is especially committed to meeting the goals in schools with high percentages of students and families that have the highest risk of having inequitable access to transportation, including people of color, people experiencing poverty, people with disabilities, and people who experience language barriers.

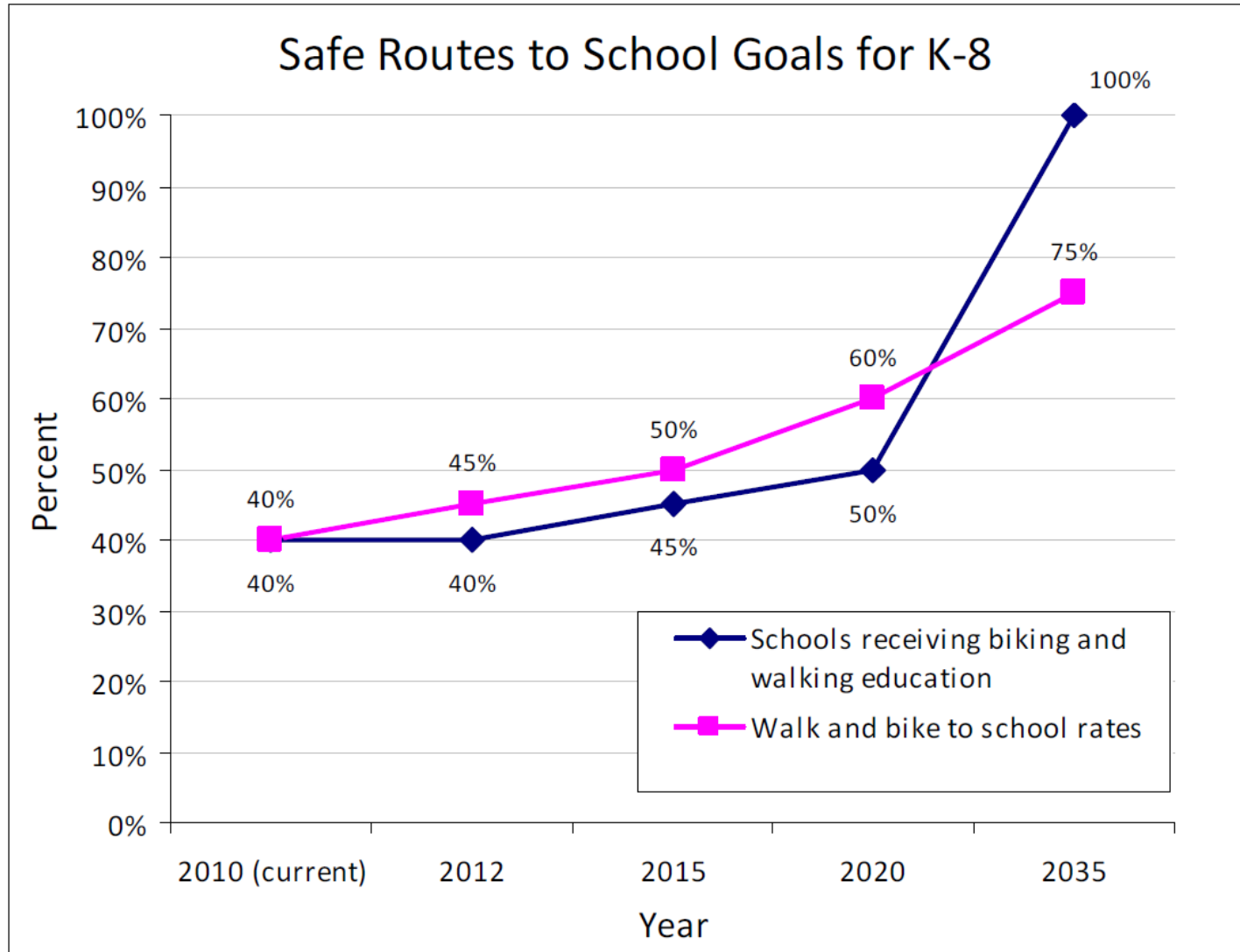
These policies and goals will guide Portland's Safe Routes to School Program.

program.



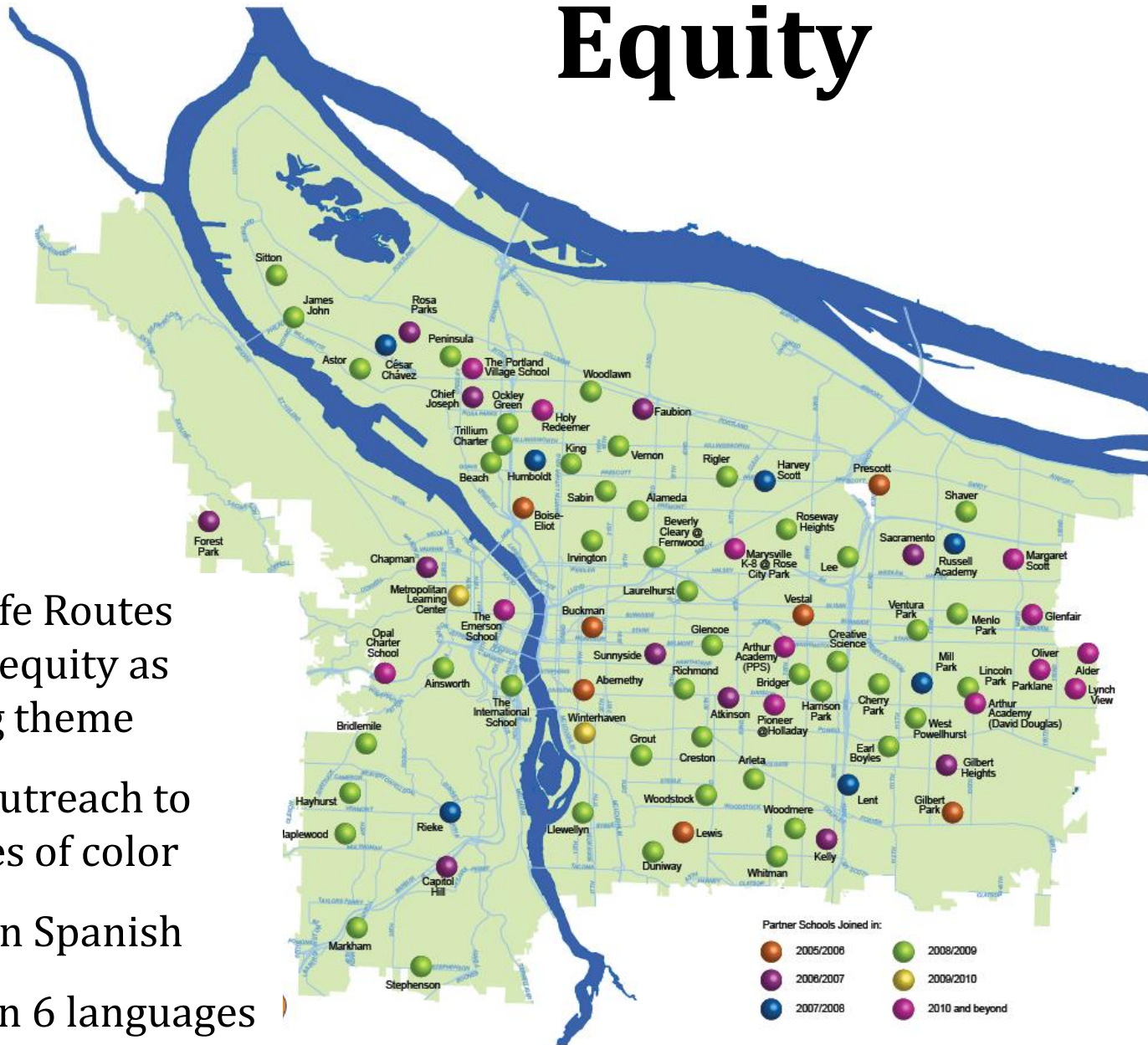
- **Planning for Equitable Transportation.** Continually advance coordination between the Portland Bureau of Transportation and agency partners to equitably plan for the active trip.
- **Building and Maintaining Active Routes.** Equitably create transportation infrastructure to assure that walking and biking to school are safe, convenient, accessible, and desirable choices.

Policy



Equity

- Created Safe Routes policy with equity as overarching theme
- Targeted outreach to communities of color
- Trainings in Spanish
- Materials in 6 languages



Have fun. Be safe. Grow healthy. Get there.



Education

2nd Grade

Pedestrian Safety Education

4th & 5th Grades

Bicycle Safety Education

Ped. Safety at Abernethy



Education

2nd Grade

Pedestrian Safety Education

4th & 5th Grades

Bicycle Safety Education

Students in Bike Safety

Encouragement

Walk + Bike to School Day
Sacramento Elementary School



Claudia Ruseck – School Counselor & Safe Routes
Champion at Sacramento



Bike Train PDX

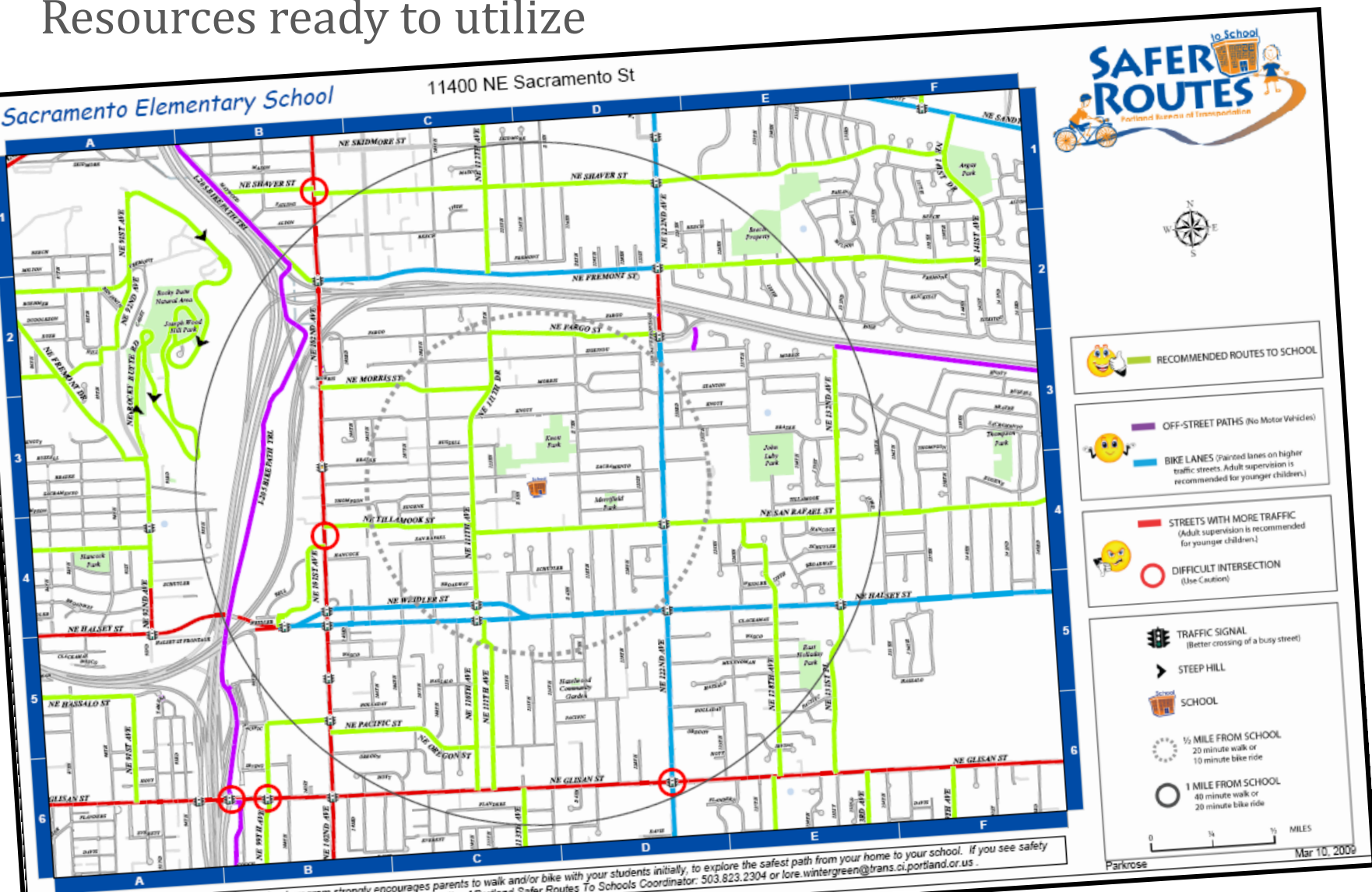
Communities biking to school together, one day a week



Encouragement

Encouragement

Resources ready to utilize



The City of Portland Safer Routes To School program strongly encourages parents to walk and/or bike with your students initially, to explore the safest path from your home to your school. If you see safety problems along the identified safer routes, please contact Lore Wintergreen, City of Portland Safer Routes To Schools Coordinator: 503.823.2304 or lore.wintergreen@trans.ci.portland.or.us.

Encouragement

Resources ready to utilize



1 Where should your Safer Routes to School SmartTrips materials be delivered? Please print:

Parent/Caregiver Name: _____

Address: _____

City: Portland State: OR Zip: _____ Phone: _____ Email: _____

My child's school: _____

Please keep me up to date on SR2S by email or mail.

Family Events Get a schedule of family-friendly walking, bicycling, and bus-riding events in your neighborhood for one fun-packed school year and summer.

Check here if you can help volunteer or plan some fun events.

Family Adventures in Safe Transportation:

A workbook for children and their parents. Provides important information and fun activities for students to learn about pedestrian, bicycle, and child passenger safety. (Please tell us if you need more than one per grade level.)

- Grade K-1 # _____
- Grade 2-3 # _____
- Grade 4-5 # _____

Choose Your Own Safer Routes to School SmartTrips Adventure Session.

A specialist will meet with you and your family to discuss the best ways for you to get around the city using environmentally-friendly transportation – tips, tricks, and questions answered!

6 CHOOSE YOUR FREE GIFT!

A. Hand-Pumped Flashlight

This flashlight requires no batteries, only hand-powered action.

Student _____ A B C
 Student _____ A B C
 Student _____ A B C

B. Walk There!

Pocket-sized booklet of 50 walks in and around Portland and Vancouver. You and your family can discover some new parks and fun places.

C. I Love My Bike Bell Great for letting walkers and other bicyclists know that you're nearby or passing, or for ringing your heart out.

Please limit one gift per student.
 Circle one choice for each.... While supplies last!



All materials will be delivered by bicycle within 2 weeks of receiving your order form.

2 WALKING

Please check as many boxes as you would like.

Portland Walking Maps Detailed local area maps of walking, biking, bus and MAX routes.

- North Portland Southeast Portland
- Northeast Portland Southwest Portland

Safer Routes to School Family-Friendly map This map includes safer routes within 1 mile of your children's school (great for bicycling and walking).

What Every Child Should Know About Pedestrian Safety! Pedestrian safety information and laws

Volunteer! Learn how to lead, help, and have some fun with a walking Safer Routes to School activity or event with your child's school.



3 BICYCLING

Please check as many boxes as you would like.

Portland Bicycle Maps Detailed citywide and local area maps of bicycling routes

- Portland Citywide Bicycle Map and Resources For all skill levels
- North Portland Outer Southeast Portland
- Northeast Portland Southeast Portland
- Downtown Portland Southwest Portland

Portland By Cycle: A Guide to Your Ride Tips, techniques and street smarts to make your ride safer and more rewarding. Includes tips on fitting your helmet and dressing for the elements.

Safe Routes to School Safe Biking Handbook A student's guide for learning how to safely ride a bicycle. Includes instruction for proper helmet fitting and basic rules of the road.

A Perfectly Fitted Bicycle Helmet Guide An illustrated guide

Volunteer! To assist with your school's Bicycle Safety Education class for 4th or 5th grade students, or to learn how to lead, help, and have some fun with a bicycling Safer Routes to School activities or events with your child's school.



4

DRIVING WISELY

Please check as many boxes as you would like.

Idling Your Car Facts on engine idling and reducing pollution that every driver should know.

I Brake for Kids bumper sticker Perfect for letting other drivers know that you slow down for children and other walkers and bicyclists.

Child Passenger Safety Brochure Includes age and weight requirements for child safety seats, booster seats, and lap and shoulder belts. Also comes with a schedule for Portland fitting stations.

5 BUS, LIGHT RAIL, STREETCAR, TRANSIT, AERIAL TRAM

Please check as many boxes as you would like.

Bus Schedules and Routes

Select the bus, light rail (MAX) or street car routes you want

Bus Route # _____ Bus Route # _____

Bus Route # _____ Other _____

If you don't know, we'll choose schedules for routes closest to your home.

Personalized Transit Tracker card We'll send you your closest bus Stop ID number so you can call to find out when the next bus is coming in real time.

TriMet Rider's Guide Information on fares and how to ride TriMet buses, light rail (MAX), and the Portland Streetcar.

Earl P. Nutt Activity Books Fun puzzles and coloring pages for all ages interested in learning about safety around buses and MAX lines. (Please indicate if you need more than one per grade level.)

Earl P. Nutt's Safety Adventure, grades K-3 # _____

Earl P. Nutt's Safety Challenge, grades 4-8 # _____

Fold-A-Bus Change Bank Folds into a TriMet bus with slot for collecting coins and dollars for bus fare.

The Magic School Bus Gets Cleaned Up Children's book Ms. Fritzzle's class learns about air pollution so their diesel-powered school bus can get retrofitted to control pollution.

Volunteer! Learn how to organize your own Transit Treasure Hunt or other public transportation activity.

Sign Up! For more information about joining a carpool to help students get to school. Your Safer Routes to School staff will help you find others interested in carpooling to your school.

Volunteer! Learn how to organize, help, and have some fun with a Pollution Reducin' Campaign and other driving wisely activities at your child's school.



Encouragement

Resources ready to utilize

1 **What's the best way to get to school?**

Parent/Caregiver Name: _____
 Address: _____
 City: *Portland*
 My child's school name: _____
 Please keep this form in a safe place.

Family-friendly walking route in your neighborhood

Safe route for walking to school

Safe route for walking to school

6 **CHOOSE YOUR GIFT**

A. Hand-Pumped Flashlight This flashlight requires no batteries, only hand-powered action.

B. Walk There! Pocket-sized booklet of 50 walks in and around Portland and Vancouver. You and your family can discover some new parks and fun places.

C. I Love My Bike Bell Great for letting walkers and other bicyclists know that you're nearby or passing, or for ringing your heart out.

Student _____ **A B C**

Student _____ **A B C**

Student _____ **A B C**

Please limit one gift per student.

Circle one choice for each.... While supplies last!

3 BICYCLING
 Please check as many boxes as you would like.

Portland Bicycle Maps Detailed citywide and local area maps of bicycling routes

Portland Bicycle Map and Resources

5 BUS, LIGHT RAIL, STREETCAR, TRANSIT, AERIAL TRAM
 Please check as many boxes as you would like.

Bus Schedules and Routes

Select the bus, light rail (MAX) or street car routes you want

Bus Route # _____

WALKING SCHOOL BUS

Buses begin at:

www.SafeRoutesForLand.org

down for children bicyclists.

Child Passenger Safety Brochure Includes age and weight requirements for child safety seats, booster seats, and lap and shoulder belts. Also comes with a schedule for Portland fitting stations.

organizes fun with a Pollution Reduction Campaign and other driving wisely activities at your child's school.

Encouragement

Resources ready to utilize

1 What is the purpose of the Safe Routes to School program?
 Parent/Caregiver Name: _____
 Address: _____
 City: Portland
 My child's name: _____
 Please check the appropriate box:
 Family-friendly route in your neighborhood
 Other route
 Family-friendly route: A workable route that provides for student safety and other needs.
 Smiles: A smiling face on a child's face.

6 CHOOSE YOUR GIFT

A. Hand-Pumped Flashlight This flashlight requires no batteries, only hand-powered action.

B. Walk There! Pocket-sized booklet of 50 walks in and around Portland and Vancouver. You and your family can discover some new parks and fun places.

C. I Love My Bike Bell Great for letting walkers and other bicyclists know that you're nearby or passing, or for ringing your heart out.

Student _____ A B C
 Student _____ A B C
 Student _____ A B C

Please limit one gift per student.
 Circle one choice for each.... While supplies last.

Safe Routes to School Campaign Manual

A Guide to Promoting Walking and Biking at your School

Stop + Walk • Walking School Bus • Bike Train

SAFE ROUTES
 A PARTNER PROGRAM OF THE CITY OF PORTLAND

CITY OF PORTLAND
 DIVISION OF TRANSPORTATION

Engineering - Prescott School

----- BEFORE -----



----- AFTER -----



Median Refuge Island
Crosswalk & Signing

Speed Bumps

Paved Shoulder

Engineering

Sacramento

Russell Academy

----- Bike Parking -----

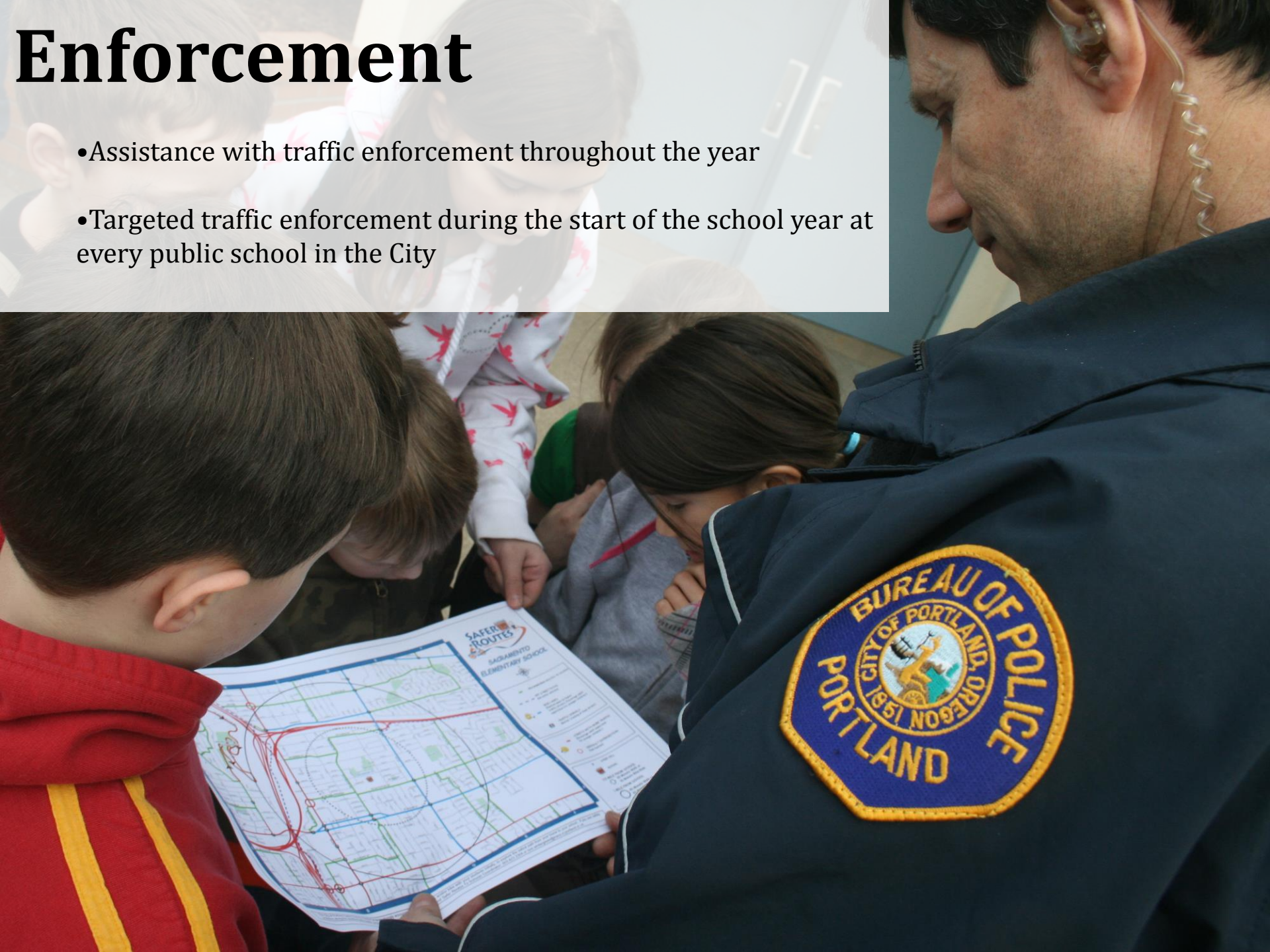


----- Marked Crossings -----



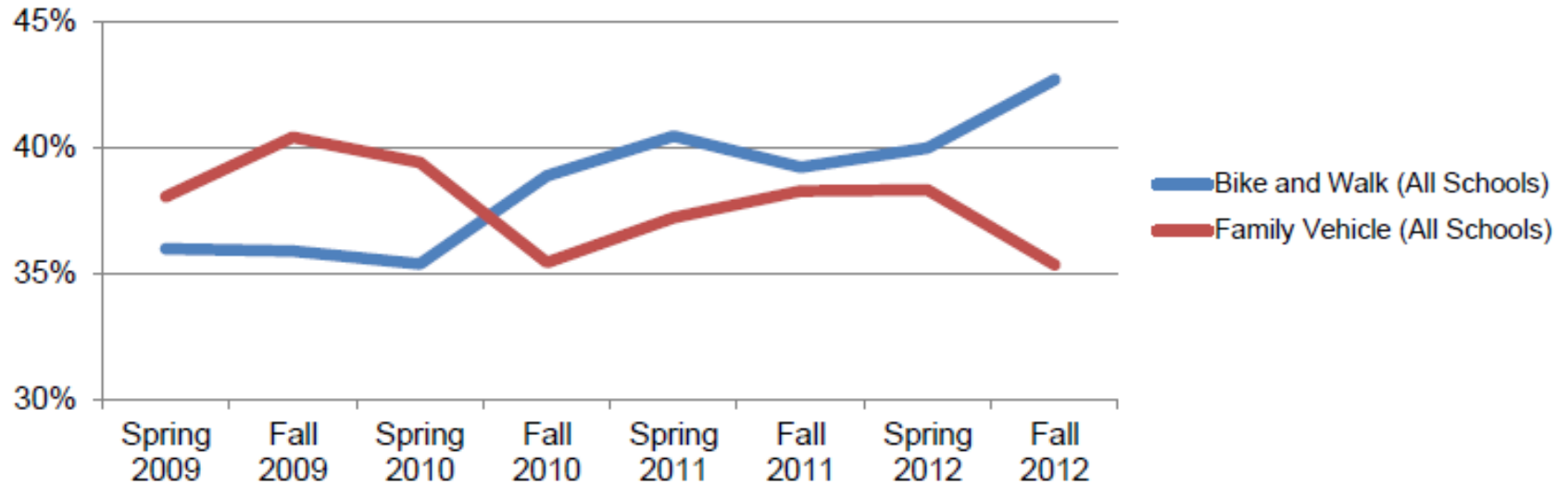
Enforcement

- Assistance with traffic enforcement throughout the year
- Targeted traffic enforcement during the start of the school year at every public school in the City



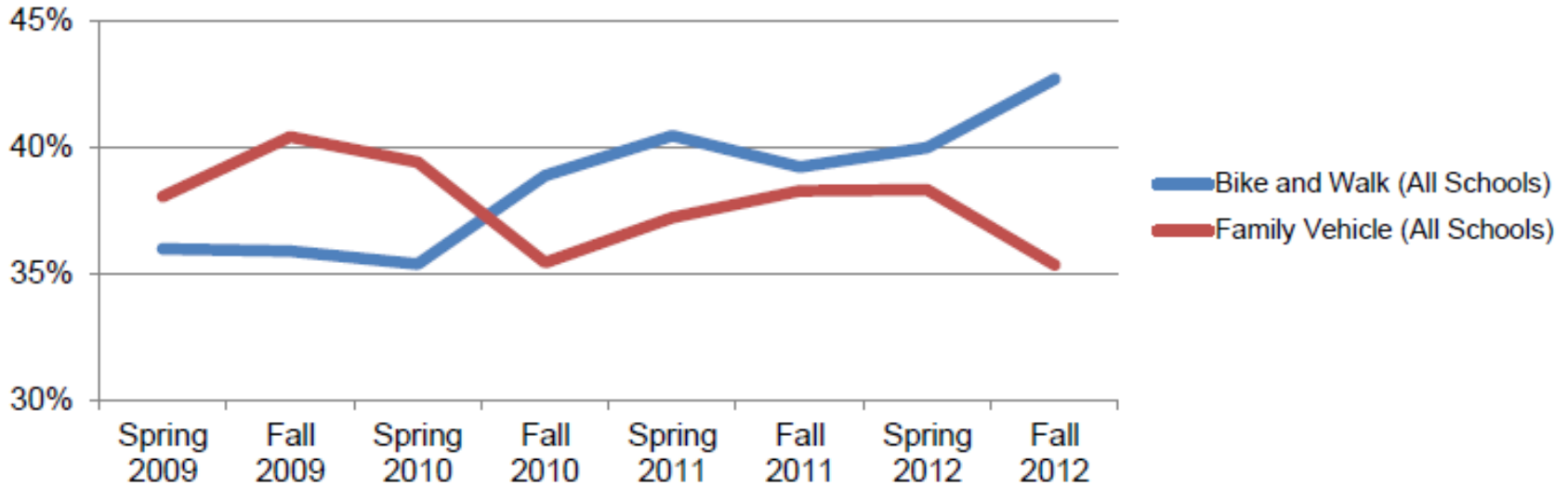
Evaluation

How has Safe Routes to School historically performed?

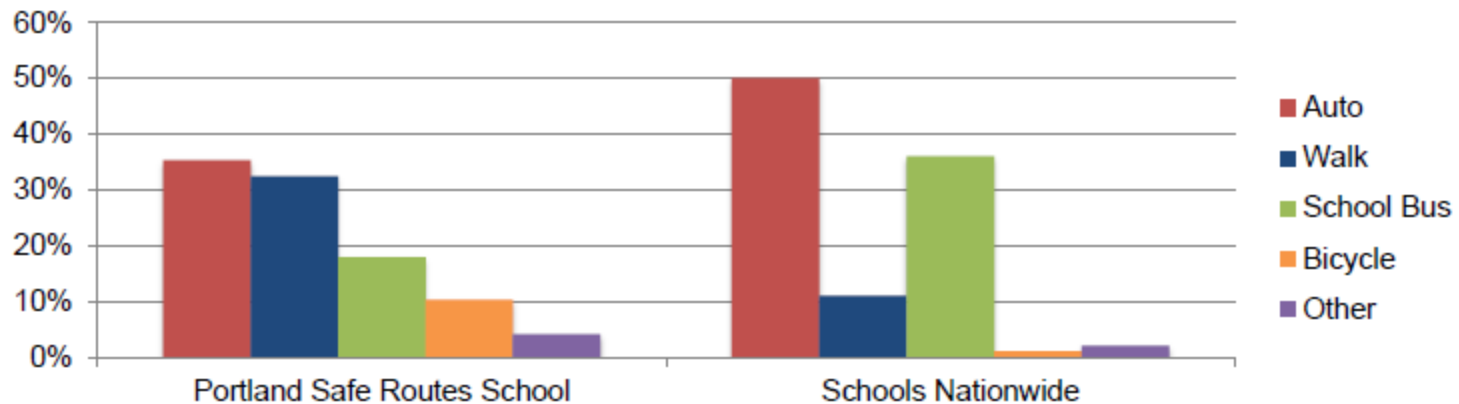


Evaluation

How has Safe Routes to School historically performed?



How are different modes of transportation used in Portland compared to the national average?



What's Next: Equity & Bike Parking



**Franklin High
School**



Benson High School

What's Next: Equity & Bike Parking



Franklin High School

36 City-installed bike
parking spaces

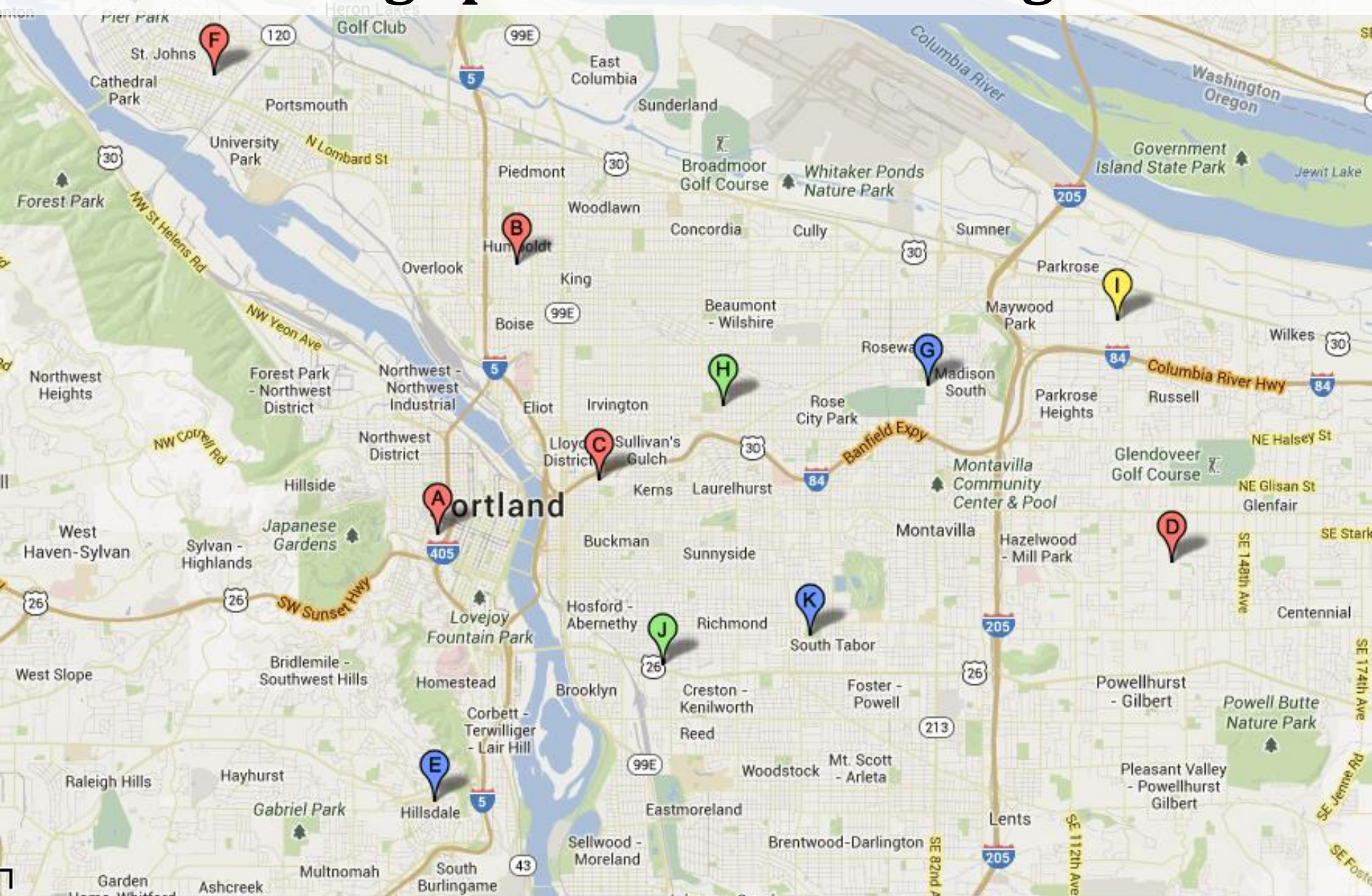
What's Next: Equity & Bike Parking

Benson High School

No bike parking



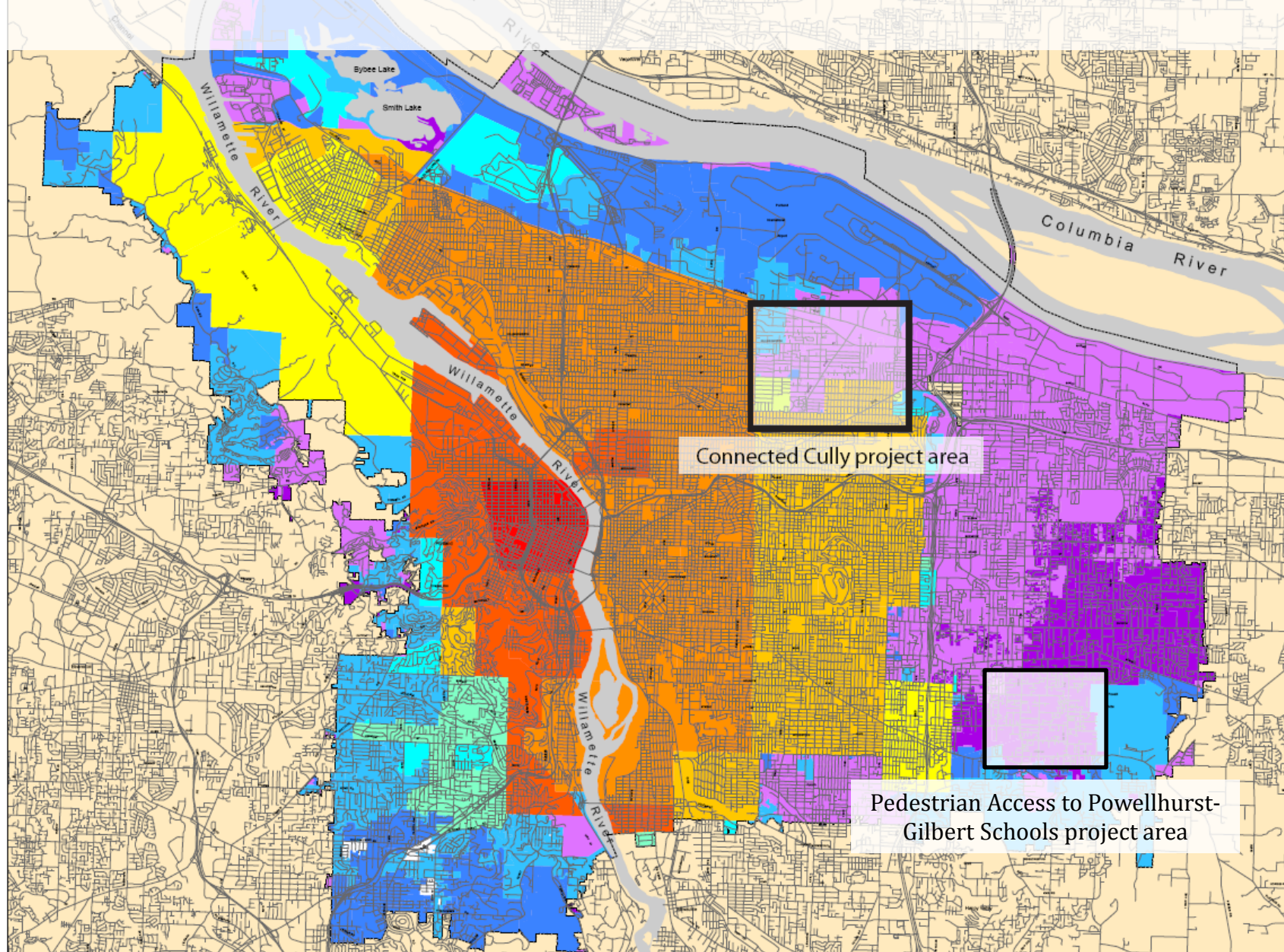
Bike Parking Spaces at Portland High Schools



of spaces 0 30-40 50-60 150+

What's Next: SRTS as a Network

Annexations to the City of Portland

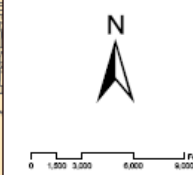


Legend

- City Boundary
- Area outside of City

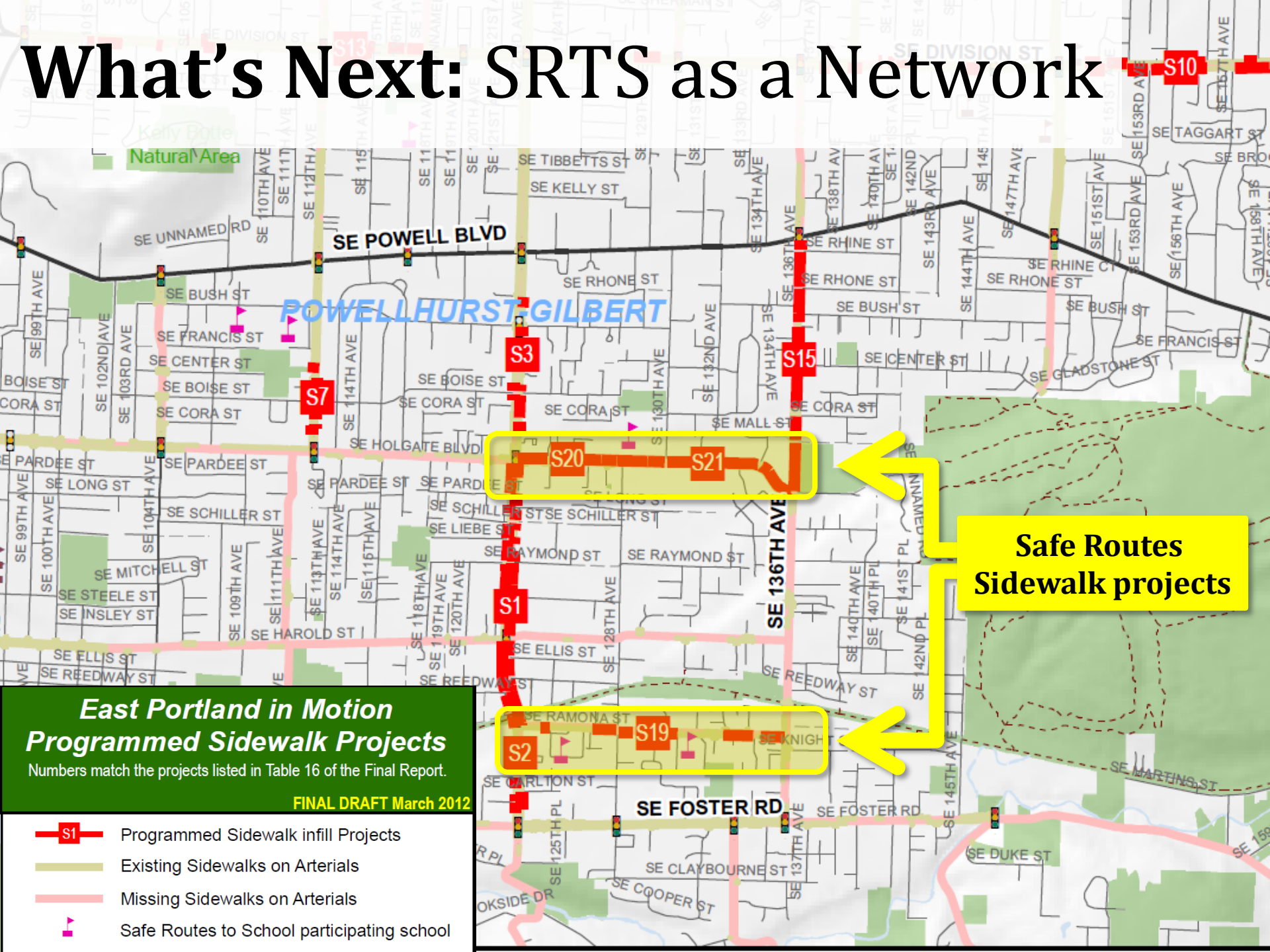
Annexations by Year

- Pre 1881
- 1881 - 1900
- 1901 - 1910
- 1911 - 1920
- 1921 - 1930
- 1931 - 1940
- 1941 - 1950
- 1951 - 1960
- 1961 - 1970
- 1971 - 1980
- 1981 - 1990
- 1991 - Present
- No Data



INFORMATION SOURCES:
 Street Centerlines: U.S. Census Bureau TIGER data, registered to feature under contract to Metro. Updated by Metro through Jan. 1999.
 City Boundary: Copied by Portland Department of Transportation. Updated by POCOT and Bureau of Planning, October 2000. Registered to base data maps.
 All data compiled from source materials at different scales. For more detail, please refer to the source materials or City of Portland, Bureau of Planning & Sustainability.
 The information on this map was derived from digital databases on the City of Portland. Bureau of Planning & Sustainability, GIS.
 No warranty is made in the creation of this map, but it is provided "as is". The City of Portland cannot accept any responsibility for any omissions, or positional accuracy, and therefore, there are no warranties which accompany this product. However, notification of any errors will be appreciated.





What's Next: SRTS as a Network



East Portland in Motion Programmed Sidewalk Projects

Numbers match the projects listed in Table 16 of the Final Report.

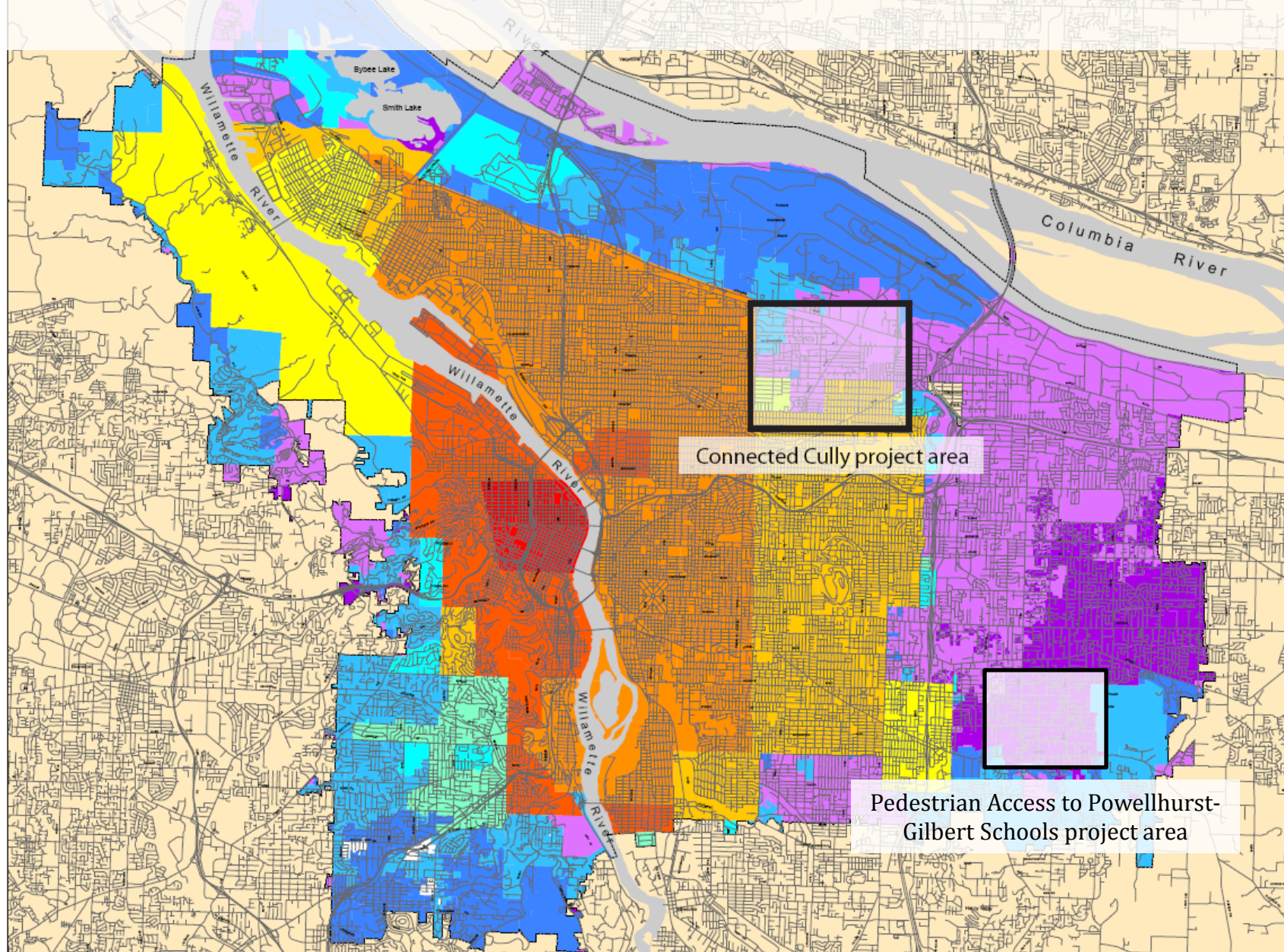
FINAL DRAFT March 2012

-  S1 Programmed Sidewalk infill Projects
-  Existing Sidewalks on Arterials
-  Missing Sidewalks on Arterials
-  Safe Routes to School participating school

**Safe Routes
Sidewalk projects**

What's Next: SRTS as a Network

Annexations to the City of Portland

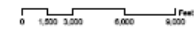


Legend

- City Boundary
- Area outside of City

Annexations by Year

- Pre 1881
- 1881 - 1900
- 1901 - 1910
- 1911 - 1920
- 1921 - 1930
- 1931 - 1940
- 1941 - 1950
- 1951 - 1960
- 1961 - 1970
- 1971 - 1980
- 1981 - 1990
- 1991 - Present
- No Data



INFORMATION SOURCES:

Street Centerlines: U.S. Census Bureau TIGER data, registered to footcst under contract to Metro. Updated by Metro through Jan. 1999.

City Boundary: Copied by Portland Department of Transportation. Updated by POCOT and Bureau of Planning, October 2000. Registered to base data.

All data compiled from source materials at different scales. For more detail, please refer to the source materials or City of Portland, Bureau of Planning & Sustainability.

The information on this map was derived from digital databases on the City of Portland. Bureau of Planning & Sustainability, OR.

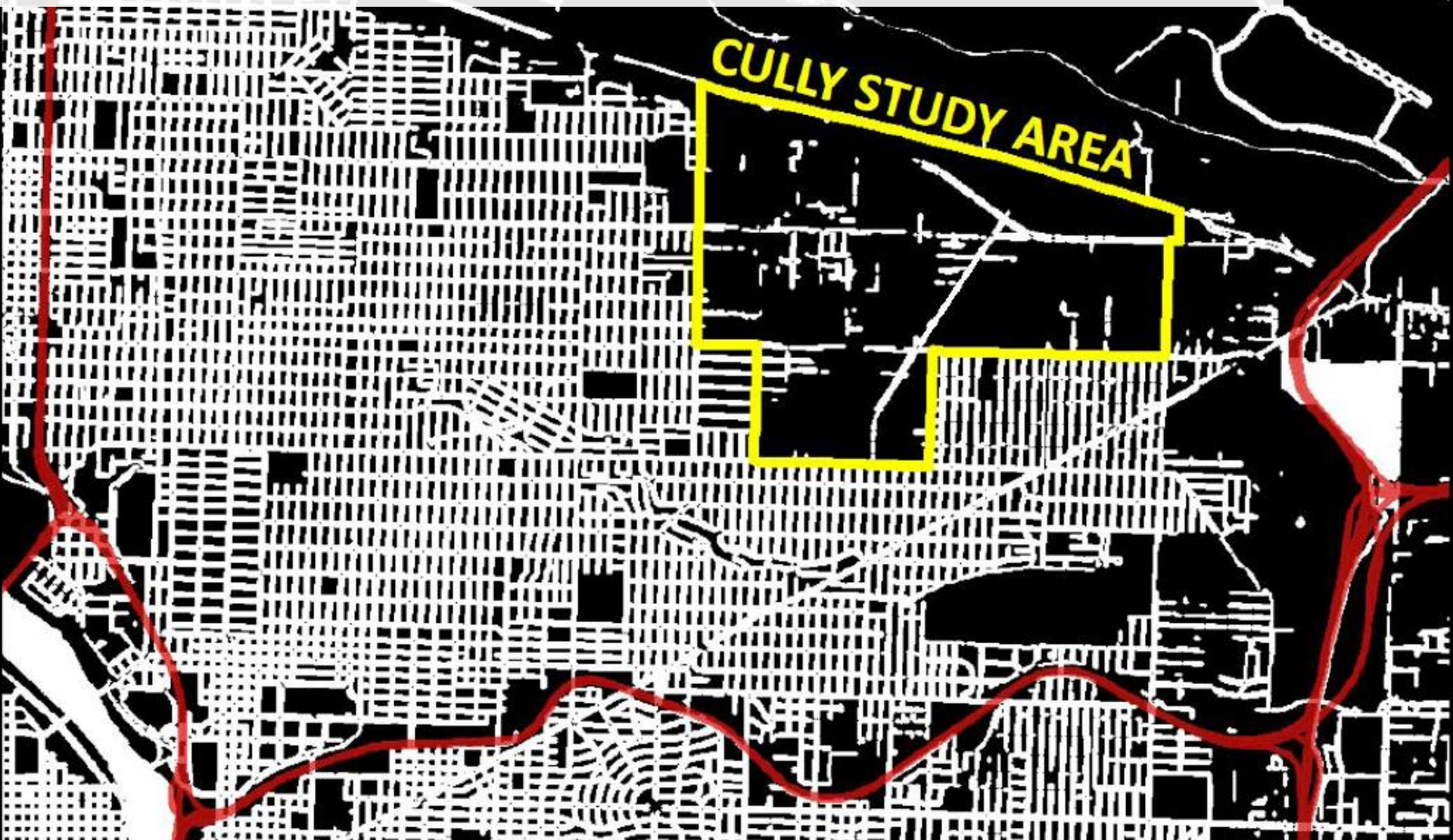
The information on the map was derived from digital databases on the City of Portland. Bureau of Planning & Sustainability, OR. The City of Portland cannot accept any responsibility for any omissions, or positional accuracy, and therefore, there are no warranties which accompany this product. However, notification of any errors will be appreciated.

Connected Cully project area

Pedestrian Access to Powellhurst-Gilbert Schools project area



What's Next: SRTS as a Network



Sidewalks in Cully vs. adjacent neighborhoods

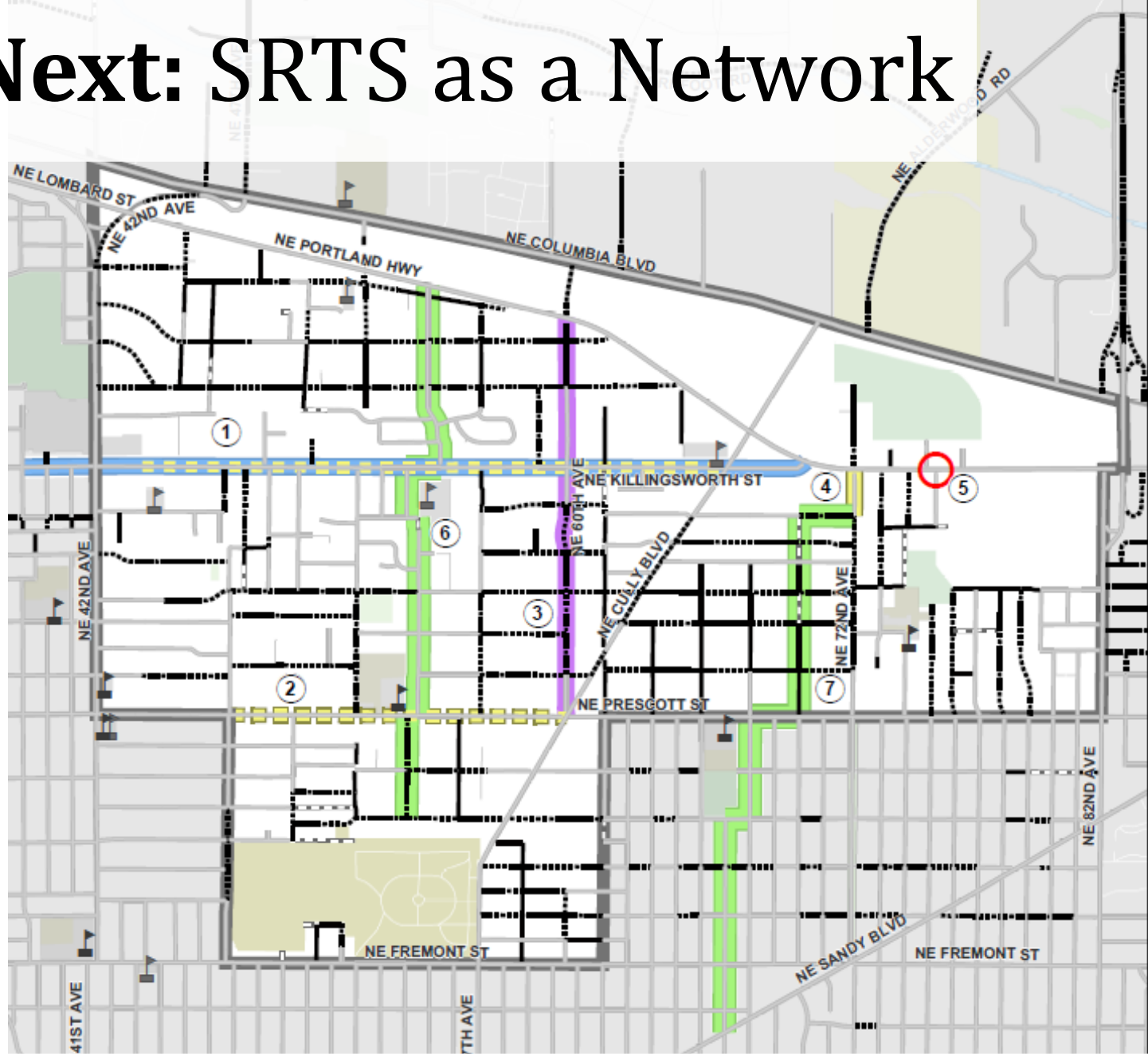
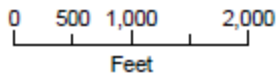
What's Next: SRTS as a Network

Proposed Improvements

- Neighborhood greenway
- Sidewalk infill
- Buffered bike lanes
- Walking path
- Multiuse 12 ft sidewalk
- Signalized crossing

Existing Street Surface

- Paved With Curb
- Paved Without Curb
- Unpaved
- Right-of-Way Only (No Str



Connected Cully — Project Site Map

Safe Routes on the Inside

SRTS at the Portland Bureau of Transportation



www.SafeRoutesPortland.org

Gabriel Graff, gabriel.graff@portlandoregon.gov, 503-823-5291