

A photograph of a residential street with a gravel path, landscaping, and a school crossing sign. The path is made of grey gravel and runs alongside a road. There are various plants and shrubs along the path. In the background, there are houses, trees, and a utility pole. A yellow school crossing sign with a black arrow pointing left is visible on a utility pole. The text is overlaid on a semi-transparent blue rectangle.

# Engineering Solutions and Strategies for Safe Routes to School

Low-cost engineering strategies and examples from Seattle

# Our vision, mission, and core values

**Vision:** Seattle is a thriving equitable community powered by dependable transportation

**Mission:** to deliver a transportation system that provides safe and affordable access to places and opportunities

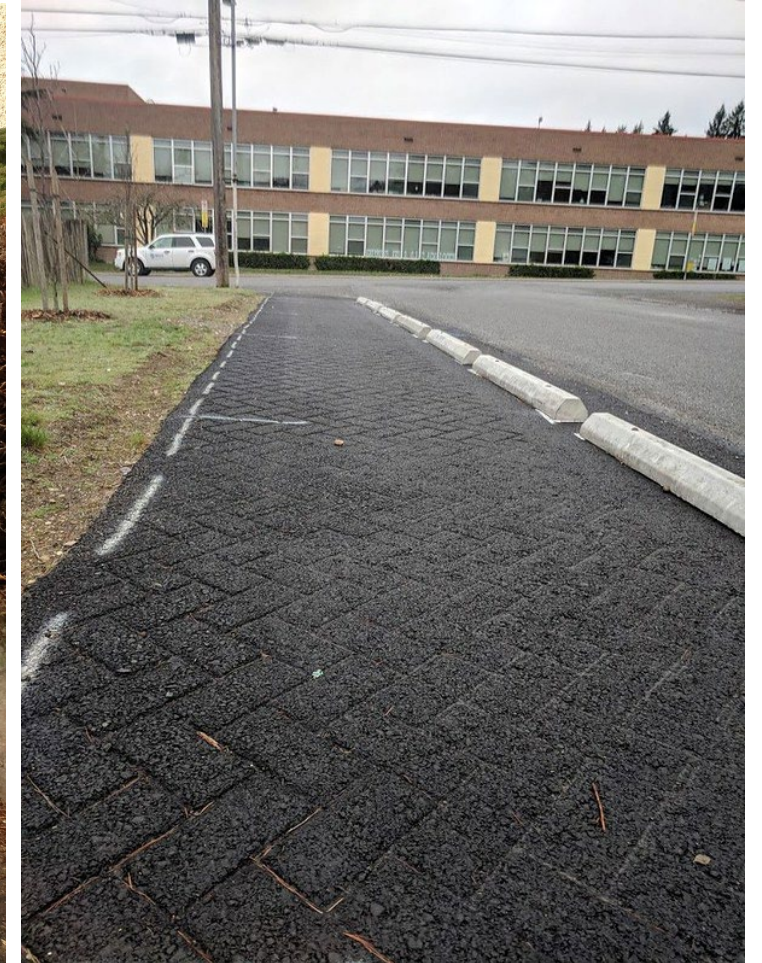
Committed to **6 core values:**

- Equity
- Safety
- Mobility
- Sustainability
- Livability
- Excellence

# Presentation overview

- Background
- Examples of Recent Projects
- Future Projects
- Your Questions / Ideas

# Low Cost Walkways



# Mercer Middle School - Before



# Mercer Middle School - After



# Painted Bulbs / Bike Racks

- XXX



# Floating Bulbs / Median Islands





# Street Murals



# Street Murals



# Decorative Crosswalks



# Speed Humps / Cushions

## Highly Effective Traffic Calming Measures

|                                       | Olympic Hills Elementary<br>NE 130th Street | Emerson Elementary<br>60th Avenue S | Rainier View Elementary<br>S Leo Street |
|---------------------------------------|---|-------------------------------------|---|
| Change in 85th Percentile Speed (MPH) | -21%  | -37%                                | -23%                                    |
| Change in Driving More Than 25 mph    | -88%  | -97%                                | -71%                                    |
| Change in Driving More Than 35 mph    | -91%  | -100%                               | -95%                                    |



# Street Trees



# Street Trees / Planting Buffer



# Stay Healthy Streets / School Streets



# Signs and Flags





# DIY Signs



# Comments and Questions

Brian.dougherty@seattle.gov | (206) 684-5124

[www.seattle.gov/transportation/srts](http://www.seattle.gov/transportation/srts)

[www.seattle.gov/transportation](http://www.seattle.gov/transportation)

