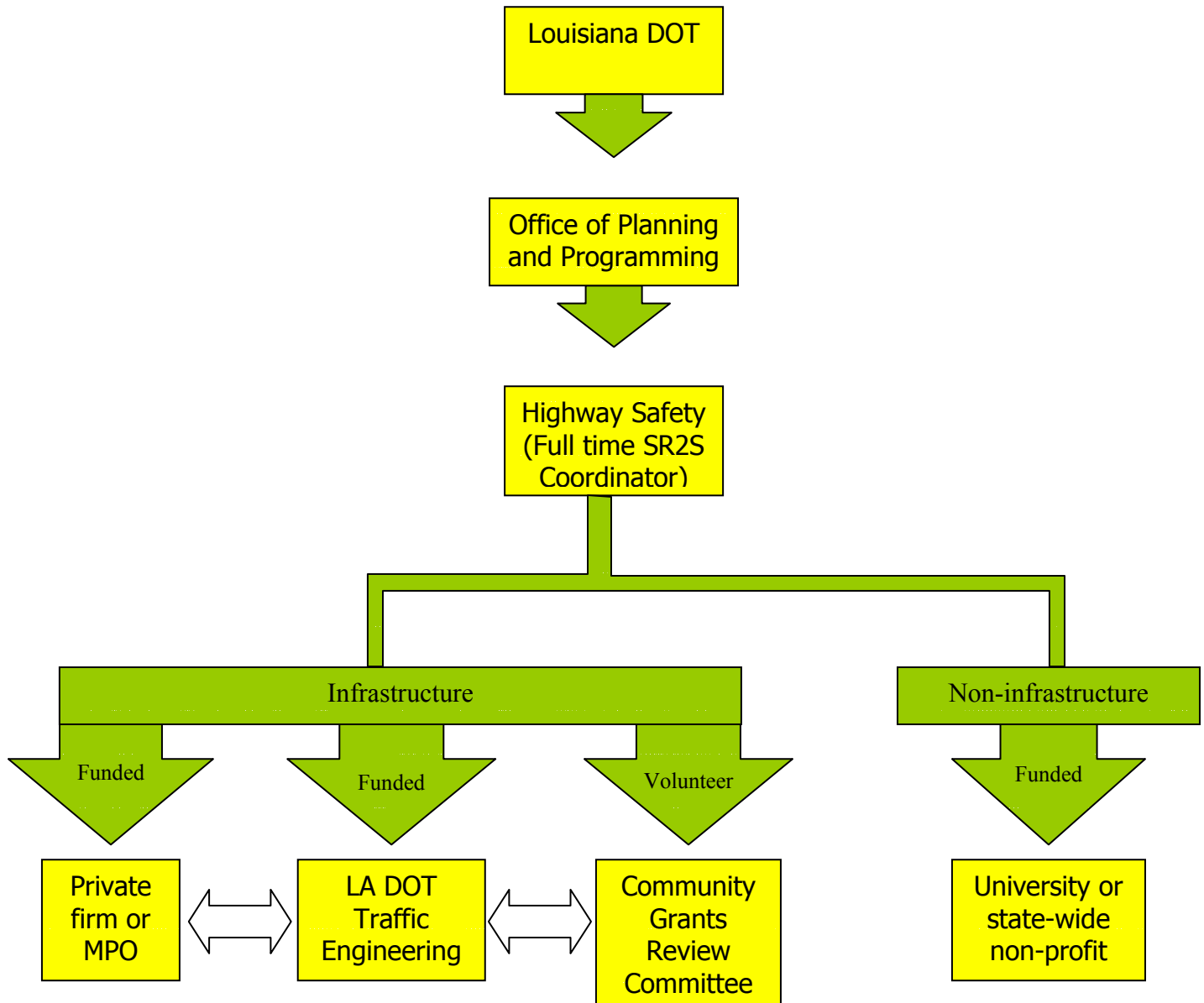


Proposed SR2S Funding Structure for Louisiana



Responsibilities:

- Crash data analysis
- Evaluation of engineering improvements

Responsibilities:

- Engineering improvements based on crash data analysis
- Engineering improvements based on community grants applications

Responsibilities:

- Select engineering projects from community grants applications

Responsibilities:

- School-based education programs
- School-based encouragement programs
- Evaluation of non-infrastructure programs